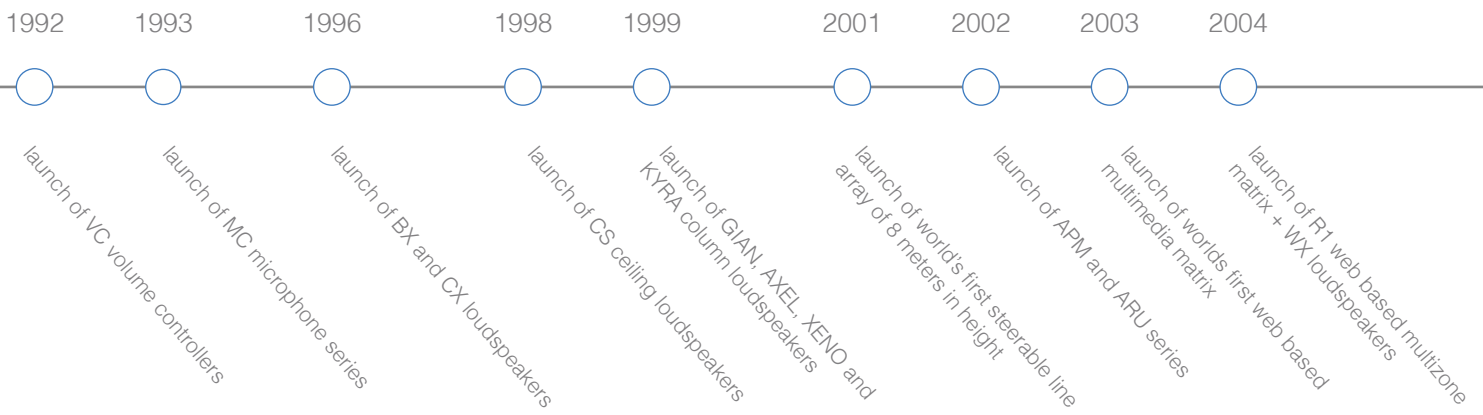


Hearing is Believing
Professional audio solutions



Index

Audio matrix systems & paging	10
Pre-amplifiers & mixers	32
Music sources	36
Amplifiers	50
Transformers	70
Speakers	
Ceiling speakers	74
Rectangular flush-mount speakers	86
Wall speakers	92
Active speaker systems	98
Full range speakers	100
Indoor speakers	102
Road speakers	103
High-output speaker systems	106
Bass cabinets	108
Column speakers	112
Sound projectors	120
Horn speakers	124
Microphones	130
Solution boxes	140
Wall panels	146
Other products	152
Measurement appliances	156
Power supplies & antennas	157
Merchandising	158
Set solutions	160



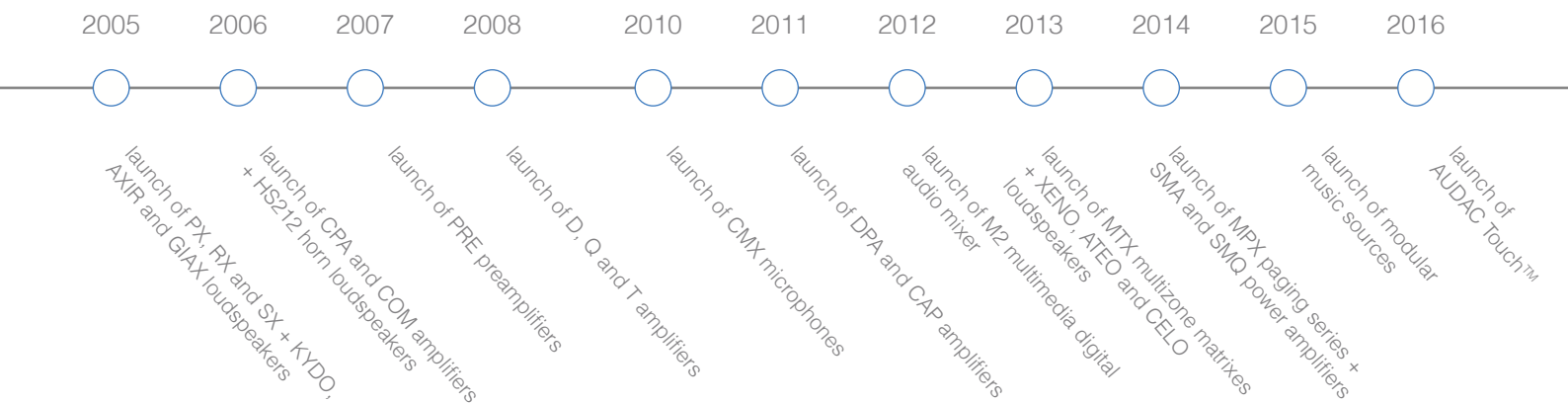


Ahead of time

It is what we experience through our senses that makes life meaningful.

In fact, it can be said that through the qualities in speech and music we experience, we become familiar with the higher values of life.

This is just one of the reasons why at AUDAC you will find a passion for sound. Each speaker, audio matrix or amplifier solution we develop expresses that same inspiration and quality that exceeds users' expectations, making it no coincidence our success results from exploring new methods and ideas beyond conventional boundaries.



AUDAC Experience Center

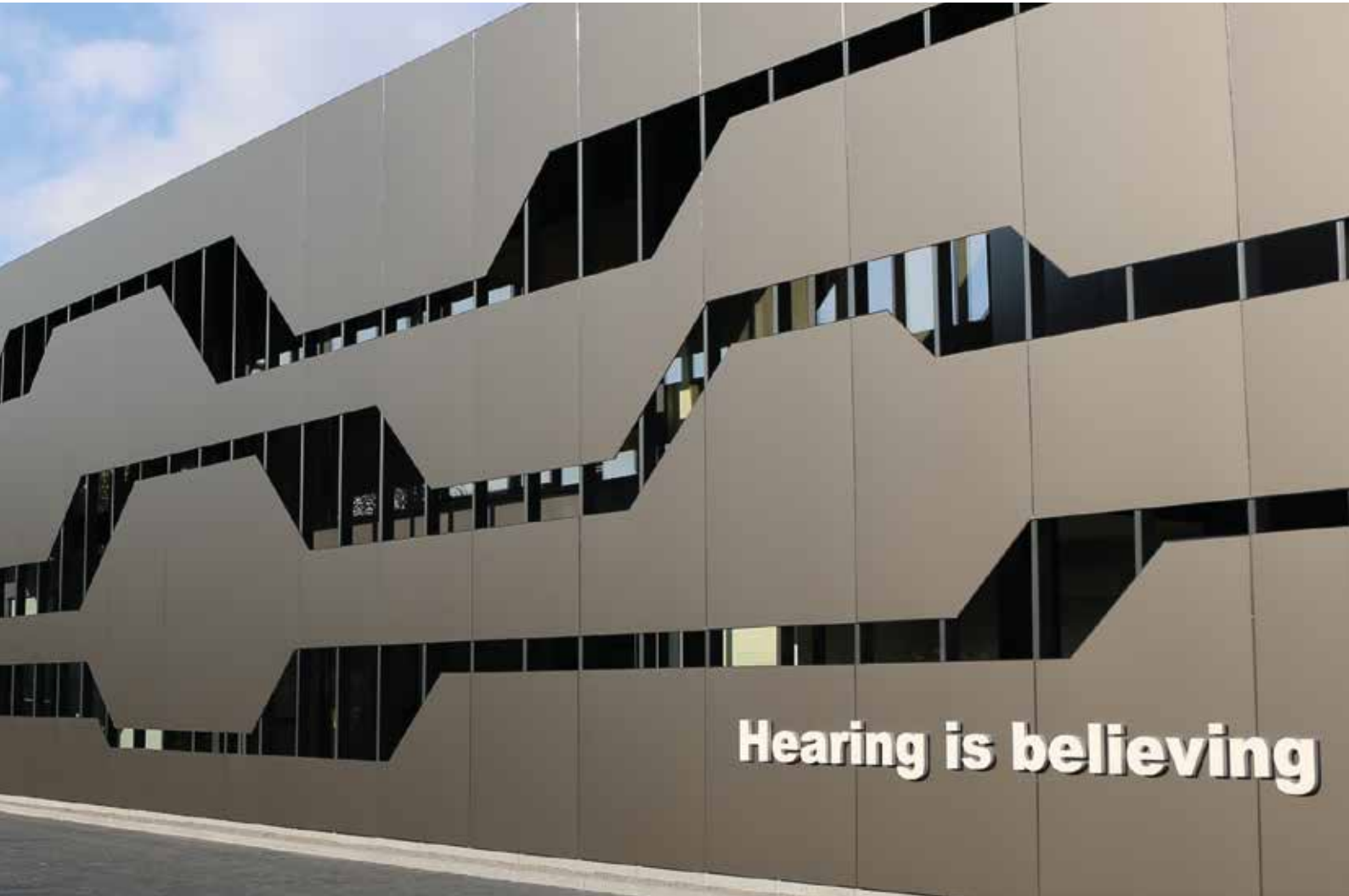
Education in combination with listening to feedback has led to the success of our partner network program and their references.

Together with our partners, we provide a unique service to all users, installers, engineering consultants and architects who come in contact with our innovative solutions.

Thanks to the AUDAC Experience Center that is located in Belgium, users and partners can experience our solutions in a very unique setting. Besides providing space for listening and demonstrations, it includes training area's to educate our partner network.

Want to find out more?
Visit the AUDAC Experience Center website,
www.theaudacexperience.eu





Hearing is believing

AUDAC Touch™

So, your device has a web interface.
What about your system ?

AUDAC strongly believes in out of your pocket controllable audio solutions and further establishes its progressive position through developing the AUDAC Touch™ total system control platform.

Using this freely available solution, application specific dashboards can be created and customized, allowing the control for multiple devices from one single application.



“Total system control”

100% customizable

Select your widgets

Output widget

Input selection and output volume adjustment is made possible through graphical slide faders combined with dropdown menus.

Internet radio station

Currently playing radio stations, including additional carried information (artist, track, ...) can be displayed on the main dashboard. Additional widgets for control can be separately selected.

Projection screen

Relay unit controls or 3rd party equipment commands can get implemented, offering countless possibilities for expansion of your AV system to become a total system control platform.

Adaptive dashboard

Fully flexible positioning and scaling allows you to design and group your dashboard according to your own preferences. Custom naming offers an intuitive and user friendly interface according to project specific requirements.

Now playing

Currently playing mediaplayer information, including album covers and additional carried information can be displayed on the main dashboard. Additional widgets for control can be separately selected.

Tracklist

A complete track overview is given, including the possibility for browsing through your tracklist.





Not just an audio solution

Besides the well-known web-based control solutions, a variety of functions from different devices can be merged together as widgets in one single screen. Once configured, user accounts will be saved in the cloud allowing your dashboard to be accessed from any mobile device. Different levels of access are possible, offering system operation, system configuration or overall system administration functionalities. Hereby, authorization for every type of account can be specifically configured.

Use up to 5 simultaneous socket connections to various supporting AUDAC devices, including all matrix systems, audio players and other serial communication supporting devices in combination with APC100 gateways, such as WaveDynamics™ amplifiers.



- ▶ Total & application specific system control
- ▶ Simultaneous multi-device support
- ▶ User configurable dashboards
- ▶ Different level user accounts (cloud)
- ▶ Supports 3rd party equipment





MATRIX SYSTEMS

Innovative, expandable and powerful, these comprehensive solutions are suited for practically all multi-zone audio applications.

M2

Multimedia digital audio mixer



M2 functions



Limiter



Feedback Reduction



input Mixing



Voice File



Audio Delay



7 Band EQ



Digital Audio Filters



Lockable



Timed Events

Limiter / automatic gain control

The M2's on-board processor is equipped with automatic gain control functionality allowing the sources level to be adjusted in different ways. One possibility configures a maximum input level and reduces it when the exceeding the configured level. Another option is to configure a fixed level whereby the gain is dynamically controlled so a constant output volume is achieved. This is ideal for applications with various audio sources or radio stations with different levels are connected. This function can also be configured as a noise gate reducing hum and feedback which cuts the signal when not in use.

Feedback reduction

Microphones connected to the M2 using one of its 8 balanced inputs can benefit from the M2's

signal processing to reduce or eliminate feedback. With a flexible system such as the M2, it is important that it can be used to its full potential without feedback. For example, when a microphone is connected for an unannounced speech, you no longer have to worry about unwanted feedback. The M2 makes sure that the speaker only has to focus on his speech.

Input mixing

The M2 allows any number of inputs to be mixed, letting you combine one or multiple microphones with other audio sources in a single zone. The talkover function even dynamically lowers the volume for a certain source when other selected sources are activated. For instance by having the music level lowered when a microphone is in use.

Built-in voice file interface

Prerecorded messages and signals can be played directly from the SD card slot on the front of the unit and recalled by either timed actions, triggered actions or control buttons such as those on an AUDAC APM paging console. This can be used for applications such as an automatically triggered doorbell or evacuation.

Audio delay

Playing intelligible audio messages in exceptionally large spaces calls for specialised measures and the M2 is up to the task. In large venues such as arenas or train stations, sound often takes over a second to reach its audience. By using a custom delay, the M2 can assure that each zone plays with a progressive delay, assuring that your message comes across, even to the people in the back.



① Remote control & RS232

The main remote control input is an RJ45 connector which should be connected to a LAN network. This makes it possible to control the M2 system using a web browser.

The RS232 connector can be used to control the M2 with external controllers. This allows you to control the system using hardware by other manufacturers like home or industrial automation systems.

② Peripheral interfaces

10 RJ45 connectors are provided for expansion with additional wall control panels and in- and output modules. All these connectors contain RS485 control signals so they allow you to control the amplifier from multiple locations. 8 of these connectors are capable of carrying bi-directional digital audio transfer signals for expansion of the input channels and remote output duplication.

③ Link in- and outputs

An optional link in- and output allows connection of multiple matrix systems in cascade. This way, audio channels can be transmitted over fiber and installations can be extended over large distances (optional OPT2).

④ Priority & contact inputs

Two priority audio inputs are provided, as well as 2+8 input contacts which can be used for triggering a wide variety of actions such as playing voice file messages or recalling mixing presets (scenes, ...).

⑤ Input 1-8 / Output 1-8

The M2 offers 8 balanced stereo inputs that are all software selectable between line and microphone level. A 9th input can be selected from 4 stereo line inputs, useful for switching between multiple sources with a single application such as video or radio.

The M2 also offers a relay output with NO and NC contacts for each of the 8 output zones. These can be used for bypassing analog volume controllers and much more such as activating emergency lights when a message is played, powering up beamers or operating automated curtains.

When the optional power amplifier kit is installed, each zone has an amplified stereo audio output with a power of 2 x 60W at 4Ω.

Inputs	Outputs	Controls	Height	Dimensions	Weight
8 line/micbalanced line 1 switchable line in 8 wall panel 2 priority	8 balanced line (optionally powered with POW2)	RS232, Ethernet, Wall panel, Display (R2DIS), Contacts	3 HE	482 x 132 x 350 mm	8.4 kg

R2

Multi-zone digital audio matrix



R2 functions



Input Matrix



Digital Audio Filters



Lockable



Timed Events

Timer scheduling

An internal real-time-clock holds the actual time and date. This gives you the possibility to create specific time schedules. The actions that can be programmed are changing the routing of a signal, adjusting the volume of a zone, muting or editing the paging volume.

Single actions at a certain date and time or actions which repeat regularly (every day or week) can be programmed. A total of up to 256 timer presets can be made. For example, this can be useful when installed in a shop: the system turns on in the morning, turns off at night and remains off during the weekends.

Priority inputs

Two audio priority inputs and two priority contact inputs are

provided. Depending on the configuration, 4 priority signals can be used. The actions that need to happen when a priority signal occurs can be freely programmed. It can switch automatically to the priority audio inputs when an audio signal is applied, or the internal routing can be adapted when a signal is available on the contact inputs. Each of the normal inputs can also act as priority inputs.

Internal DSP signal generator

An internal DSP signal generator is provided which is able to produce sinusoidal signals with an adjustable frequency, white noise signals and pink noise signals.

Zone linking

Two or more zones can be

linked so that they use the same source, volume, etc. This linking can be automatically activated using priority contacts so that multiple zones become linked when, for instance, a separating wall is removed.

Freely programmable DSP filters

It is possible to add a filter with freely selectable rollover frequency for up to 4 output channels. The rollover frequency is selectable between 10 Hz and 22 kHz and the filter response is selectable between a high pass filter, a low pass filter and a band pass filter. The filter settings can easily be made in the graphical user interface. When a subwoofer is connected, no more external crossover processor is needed.



① Remote control & RS232

The main remote control input is an RJ45 connector which should be connected to a LAN network. This makes it possible to control the R2 system using a web browser.

The RS232 connector can be used to control the R2 with external controllers. This allows you to control the system using hardware from other manufacturers like home or industrial automation systems.

② Peripheral interfaces

There are 10 RJ45 connectors provided for expansion with additional wall control panels and in- and output modules. All these connectors contain RS485 control signals so they allow you to control the amplifier from multiple locations. 8 of these connectors are capable of carrying bi-directional digital audio transfer signals for expansion of the input channels with additional wall line input units.

③ Link in- and outputs

An optional link in- and output allows connection of multiple matrix systems in cascade. This way, audio channels can be transmitted over fiber and installations can be extended over large distances (optional OPT2).

④ Priority inputs

There are two priority audio inputs provided, each with a gain control potentiometer. Furthermore, there are also two priority contact inputs provided.

⑤ Input 1-8 / Output 1-8

8 line level in- and outputs are provided. Each audio input channel has a clipping LED which indicates when the input signal is distorted, a gain control potentiometer to control the level of the input signal and RCA input connectors.

Each zone output is standard fitted with an RCA line level output connector for the connection of external amplifiers. When the optional power amplifier kit is installed, each zone has an amplified stereo audio output with a power of 2 x 60W at 4Ω.

Inputs	Outputs	Controls	Height	Dimensions	Weight
8 unbalanced line 8 wallpanel 2 priority	8 unbalanced line (optionally powered with POW2)	RS232, Ethernet, Wall panel, Display (R2DIS), Contacts	3 HE	482 x 132 x 350 mm	8.85 kg

R2 & M2

Peripheral devices



DW5066
Digital all-in-one wall panel

Whether it is for local audio source/volume control or for full installation/scene selection management, the DW5066 is a user-friendly interface peripheral for R2/M2 matrix systems. In addition, built-in RCA line source inputs and a XLR microphone input (15V phantom power available) are locally mixable, the signal of which can be patched to any output zone. These inputs may also be configured as outputs.



DW3020/4020
Wall panel controller

The DW3020 and DW4020 are flush mount wall panel controllers for the R2/M2. They can control standard functions of a specific output zone such as audio source selection and volume control.

The DW3020 and DW4020 differ only in size. The DW3020 is designed for AUDAC cover plates or standard 45 x 45 mm installation materials while the DW4020 is for BTicino Livinglight installation materials.

For a variation of installation accessories, see page 151 of this catalogue.

Internal expansion modules



POW2
Power amplifier kit

This optional kit for M2 and R2 devices offers an integrated power amplifier solution with an output power of 16 x 60W (or 8 x 120W when bridged), powering your speakers without requiring any external amplifiers. Additional amplifier (external) expansion is still possible, if any zone / output requires a higher power handling.



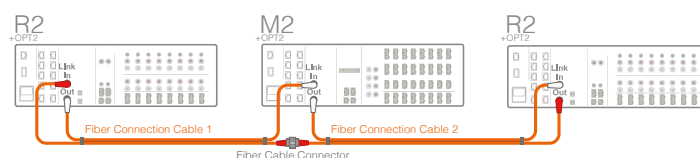
OPT2
Optical fiber kit

This optional module allows signal exchange between various devices, allowing expansion of the number of outputs / zones, including the possibility for covering large distances in big scale projects. A total of 8 stereo channels can be transmitted over a distance up to 1.000 meters. Connections are made using duplex multimode fiber fitted with ST/PC plugs.



R2DIS / M2DIS
7" touchscreen display kit

The installation of the matching touchscreen display kit on the front panel of your system allows the user to operate and control the system without requiring any additional equipment. This can be useful when installed in a technical room and/or when network access is restricted.





Web control (Flash)

Control and configuration possibilities are offered from any device featuring a Flash compatible web browser. Access is given through browsing to the unit's IP address, while the Flash-based user interface pops up. Various access levels (user and administrator) only allow authorized users to access the configuration of the system.



AUDAC Touch™ app

Full system control is made possible using the Audac-Touch™ application. This Android and iOS compatible application allows integration of various product types including audio players, matrix systems or any other supported products with each other. A wide variety of controls can be merged together as widgets in one dashboard, including output volume controls, source selection, radio station or track control, relay unit & 3rd party equipment control, ... Indicator widgets allow monitoring of currently playing tracks or complete playlists.

R2 & M2

Example residential configuration

The image below shows the digital multi-zone audio mixing system being used in a residential environment but can also be quickly adjusted to work in a small shop or office area.

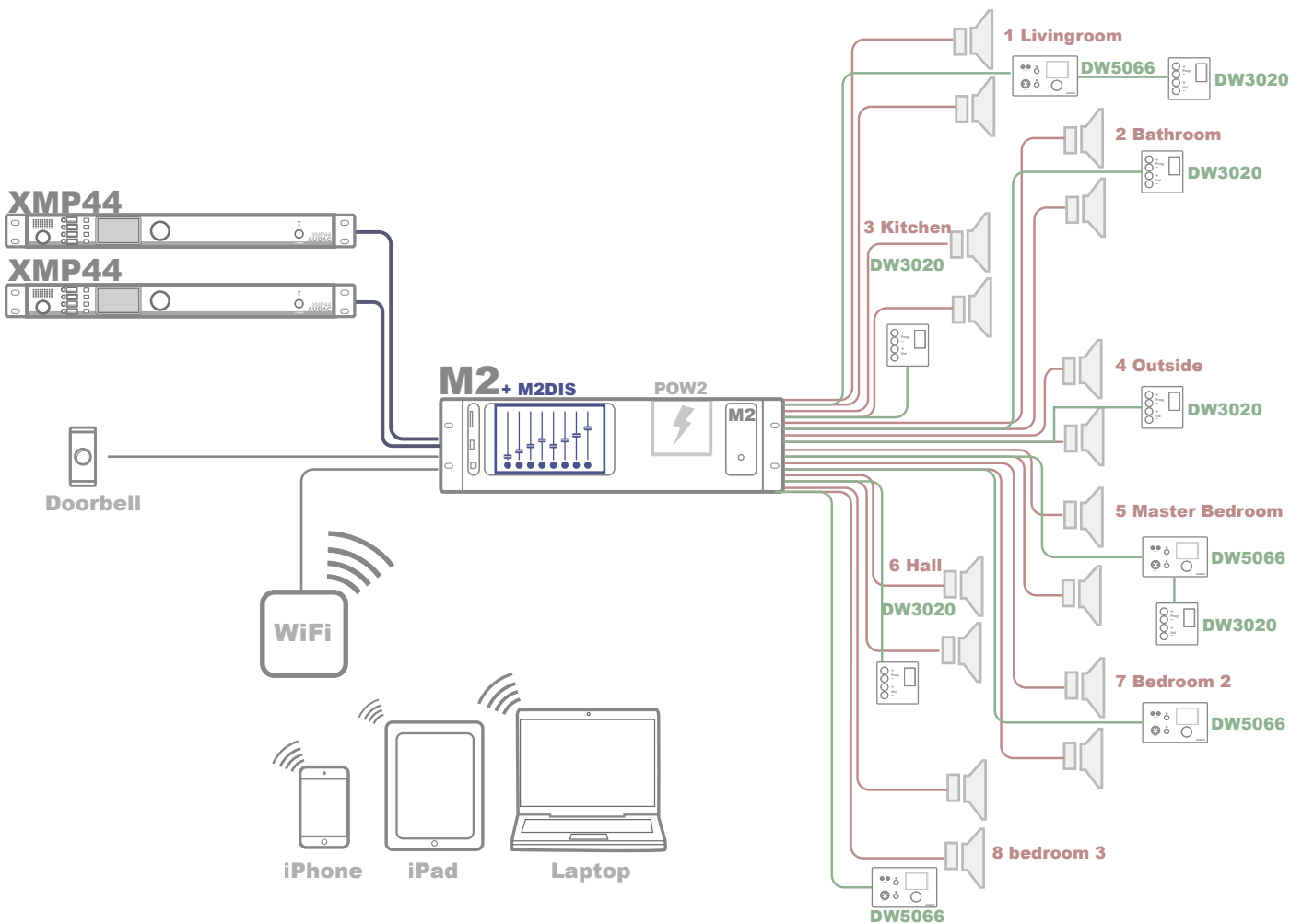
Two XMP44 devices are shown here, representing the possibility for adding any kind of audio source or media player to the system. Besides the available options, also computer, TV or even mobile devices can be connected as an audio source.

Adding a DW3020 to each zone makes it possible to adjust the audio input and volume

without the need of a WiFi signal or network connection. Expansion is even possible by the use of a DW5066 which makes us add extra audio inputs to the system that can only be used local or by the entire home.

The M2/R2 power amplifier kit, an optional extra to the system, provides each zone with its own 60W stereo output.

By combining the M2's voice file function with the contact triggers and the back of the unit we can make a doorbell that can have priority of any audio in any room of the home.



Example setup in an industrial setting

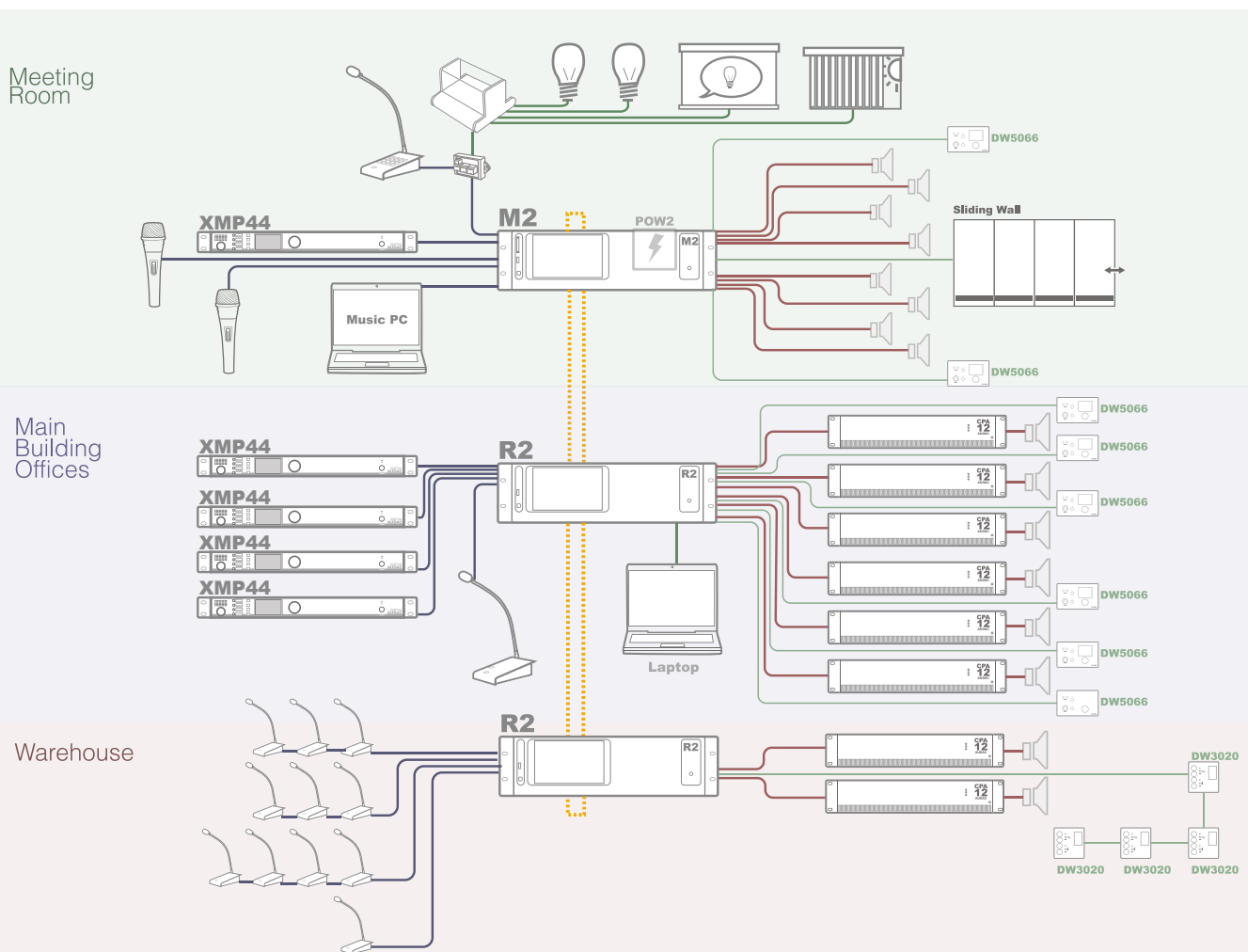
Below we can see an example setup using three units in a medium-sized business.

The main building offices are equipped with one R2 unit where to four XMP44 devices are connected. This represents the possibility for adding any kind of audio source or media player to the system which can be distributed over the entire facility.

Each zone in the building has its own local DW5066 wall panel for adjusting local zone settings according to their own preference or adding music locally using the RCA and XLR inputs to the system. A paging console is positioned near the front desk. The warehouse

has paging consoles set up across the building for easy communication between various parts of the supply and processing chain. Paging calls can be made globally or to specific departments. Local music choice and volume can be edited using DW3020 wall panels.

Finally the meeting room and its surrounding offices have a more advanced setup. Not only does the room have a powered M2 connected with two wall panels, but a microphone and paging console is also setup to control lighting, projectors and window blinds using ARJ and ARU relay switching system. Computers throughout the building allow authorised personnel to access the matrix unit's advanced options.



R2 & M2

Paging systems

The AUDAC APM paging system is designed to fulfill all your paging needs. It handles priority calls, dispatching and even evacuation messages.

Reliability, versatility and usability are the major goals during the development of the APM paging system.

The result is a system that is fully controllable and configurable through the web-based user interface of the AUDAC R2/M2 matrixes and APC100 configuration & control unit. Because changes are easy to make and can be made from any ethernet-connected computer, the APM offers the ideal solution for a wide variation of paging systems.

The system has a fully modular structure which means that it can perfectly be extended or cascaded to create an infinite number of configuration possibilities while keeping further expansion and growth in mind.

There are also some additional features provided like "Multiple Ding-Dong" and a "Voice File Interface". The "Multiple Ding-Dong" means

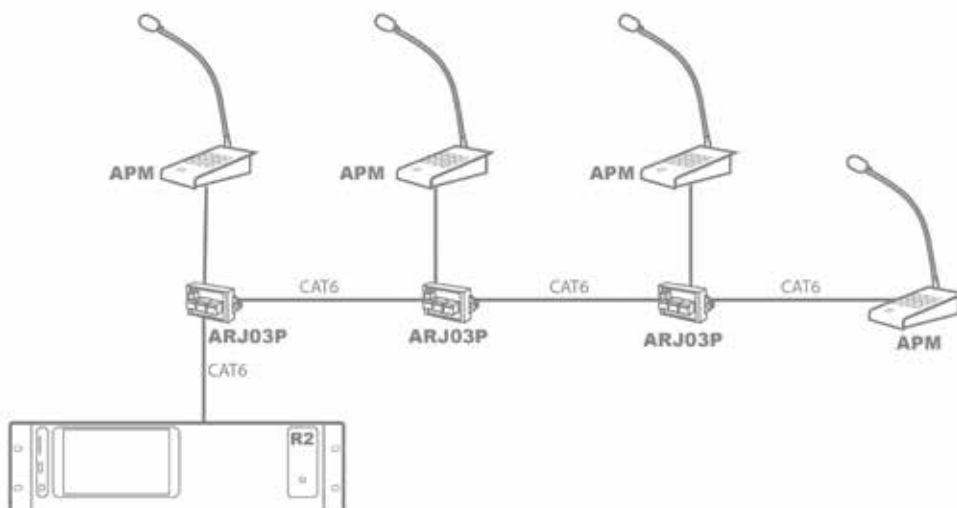
that the customer can create custom chime tunes, which can be played before the spoken message is spread. The "Voice File Interface" allows the customer to upload messages to the APM paging microphone. Up to 30 different voice files with a total length of 10 minutes can be stored. The voice files can be triggered by pushing one of the freely programmable buttons on the APM console or by pre-programmed event (configuration through APC100).

The communication between the APM consoles is done by a databus, which also provides the necessary power supply. Indication leds are applied to tell the user if the databus is occupied.

The housing of the paging consoles is made of sturdy steel and is equipped with three colour illuminated LED push buttons which provide a clear overview of the functions.

The connections for the databus are made with a UTP CAT6 cable with RJ45 connection plugs. When using multiple paging microphones in one system, the additional ARJ03P junction box has to be used.

Typical application



APM series

Digital paging microphones

The APM1xx series consists of digital paging microphones with a variation of programmable function / zone selection buttons, from 1 up to 16. They can be used in combination with various types of audio equipment, including matrix systems (both analogue and digital) and relay units.

Programming allows configuration of standard functions such as zone select, push-to-talk or relay activation, while advanced function such as voice-file playback are also possible. Using 3-layer programming, a maximum of 39 programmable zones / functions can be achieved (APM116MK2).

An internal memory allows storage of voice-file messages, while a compressor/limiter with automatic gain monitors the microphone level and controls the output level of the unit. The functioning of the device and communication is monitored and indicated on the front panel.

- ▶ Freely programmable configuration
- ▶ Internal memory for ding-dong / voicefile
- ▶ Analogue & digital audio transfer
- ▶ Cardioid gooseneck microphone (35 cm)
- ▶ Solid metal base



APM101MK2

1 function button



APM104MK2

4 function buttons



APM108MK2

8 function buttons



APM116MK2

16 function buttons



High quality back electret condenser microphone with cardioid pickup pattern.



Labelable & illuminated buttons for clear monitoring



RJ45 connection for audio, data and power transfer over CAT6 cabling.

ARU

Relay groups

The ARU series are intelligent relay units, coming in two models with a different number of relays. The featured relays are double pole types with normal open and normal closed contacts.

Control can be done through both digital (RS-485) and analogue (contact) input signals. Thanks to the flexible structure in terms of connectivity and control, the ARU's can be implemented in a wide variation of applications, adding flexible and intelligent functionality to your audio & video related or any other project.

Digital communication with the unit is achieved using the RS-485 data protocol, allowing the ARU's to be used in combination with APM1xx paging microphones. Allowing implementation to any existing audio system for switching between background music and priority voice announcements. When applying it to any digital audio matrix system such as R2, M2 or MTX series, additional functionality such as the control of monitors, projection screens, lighting, ... and many more can be achieved.

They are housed in a DIN-rail mountable enclosures, which allows rack / cabinet implementation with other electrical or control equipment



ARU104MK2

4 switching relays



ARU108MK2

8 switching relays

ARJ03P

Junction boxes



The ARJ03P junction boxes can be used for cascading multiple peripheral devices on a databus. It features an input, output and linkthrough RJ45 connector. Two jumpers allow easy termination at the characteristic impedance of the databus. A terminal block connector allows the connection of an additional 24V power supply. This can be required when the voltage at the end of the databus becomes insufficient due to the voltage drop across the cable (with long cable length).

ARJ & ARP series

Wall junction boxes

ARJ

The CP45xxARJ is an RJ45 wall connection plate which can be used as wall outlet for any communication bus transmitted over 4-pair (8-conductor) twisted pair cabling. Examples are TCP/IP networks or the connection of a digital paging microphone to an outlet socket.

The device can be connected to the front using standard patch cables, while the 8-pin terminal block connector on the rear allows connectivity to integrated wiring. The terminal block connector guarantees a stable connection with minimal required built-in depth and the possibility for linking through to a second device or junction box.

A 24V connection allows you to connect an external power supply in case the distributed voltage does not suffice for the chosen distance and two jumpers allow termination of the audio or data bus at its characteristic impedance.

ARP

The CPxxARP wall junction boxes offer the same functionality as the CPxxARJ boxes, but also include a built-in repeater that increases the maximum transmission distance for digital audio transmissions from 300 meters up to 600 meters.



BTicino Livinglight

CP43ARJ/W	43 x 43 mm, white
CP43ARJ/B	43 x 43 mm, black
CP43ARP/W	43 x 43 mm with repeater, white
CP43ARP/B	43 x 43 mm with repeater, black

AUDAC, Niko

CP45ARJ/W	45 x 45 mm, white
CP45ARJ/B	45 x 45 mm, black
CP45ARP/W	45 x 45 mm with repeater, white
CP45ARP/B	45 x 45 mm with repeater, black

APC100

Universal configuration & control unit



The APC100 is a configuration and control unit which can be used in combination with a wide variation of 'smart' AUDAC devices, ranging from matrix systems and mixers to paging consoles and wall panels.

It features different types of communication ports, such as TCP/IP, RS232 & RS485. This way, it can communicate with every 'smart' device connected in your installation and establish the missing link between them.

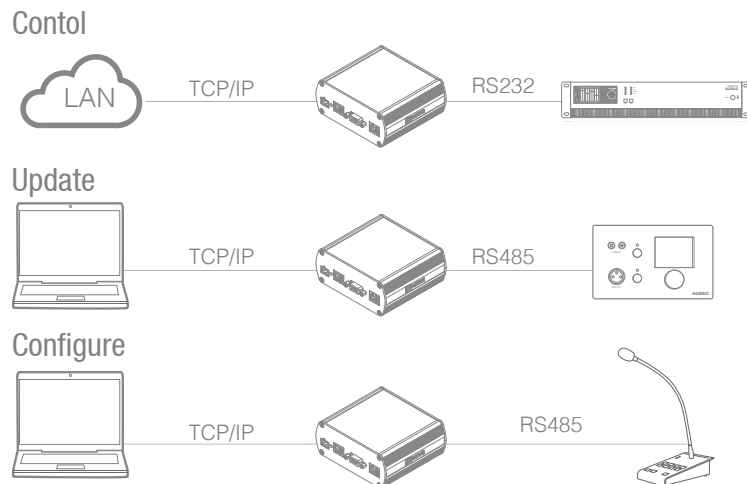
This makes the installers life easier and time saving. Complex system configurations and updates can be made in a moment, as well as back-ups and duplicates. Specific files such as voice-file messages and screensavers can be uploaded without requiring no more than the APC100 and a computer. An internal real-time

clock allows synchronizations for time controlled events in external devices (when synchronized with internet time server).

The AUDAC system manager software application allows the user to manage and control APC100's functions together with full configuration functionalities for any 'smart' connected devices (through TCP/IP, RS232 or RS485).

In addition, it can also be used as a standard gateway receiving serial communication and converting into TCP/IP format and reversed. This allows system integration for devices such as audio sources & power amplifiers without integrated network capabilities to be implemented into your automation system.

Example setups



AUDAC system manager

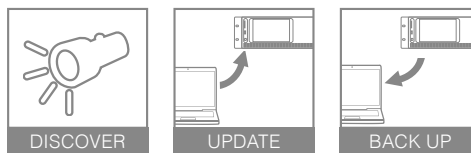


The AUDAC system manager is a Windows compatible software application which detects all 'smart' devices with their peripherals in your system and allows extended configuration, update and backup functions for the equipment.

It will automatically detect and download the latest firmware updates from the AUDAC server and save them locally on your computer. This way, the latest updates can be carried easily on-site and made to the installation without requiring an internet connection.

Other functions such as creating and reloading device backups, pre-loading configurations to peripheral devices and system monitoring will make installers life more easy.

For some functions, the APC100 configuration unit is required to establish the connection between the system manager (software) and the physical device. Compatible functions and features can be found on the AUDAC website, where also the software can be downloaded.



MTX series

Multi-zone audio matrix



The MTX series are cost effective multi-zone audio matrix systems with advanced control possibilities, comprehensive configuration and multiple expansion capabilities. The availability of two different models with 4 or 8 output zones make them the ideal solution for a wide variety of applications.

System control is easily achieved on the front panel thanks to the rotary dials and PFL speaker, or by using the integrated web-server which can be connected to any LAN network, allowing full system control from any TCP/IP supporting

device. The compatibility with AUDAC Touch™ enables you to create a total system control platform, while RS-232 allows interconnection with 3rd party automation systems.

Microphone or line level signals can be connected to both balanced Mic/Line inputs with priority, phantom power and 3-band tone control, while four RCA inputs allow connection of stereo line-level sources. Additional / local inputs for each zone can be connected using additional wall panels which also include remote control possibilities when required.



MTX48

4-zone audio matrix

- ① RS232 & TCP/IP control port
- ② Wall panel inputs & zone outputs
- ③ 4 stereo line inputs
- ④ 2 balanced microphone inputs



MTX88

8-zone audio matrix

- ▶ 24 Volt power connection
- ▶ Built-in PFL loudspeaker
- ▶ Priority audio inputs with phantom power
- ▶ Priority mute contact input

	Inputs	Outputs	Controls	Height	Dimensions	Weight
MTX48	2 mic, 4 line 4 wall panel	4 balanced stereo line, 4 zones	RS232, Ethernet, Wall panel, front	2 HE	482 x 88 x 335 mm	4.75 kg
MTX88	2 mic, 4 line 8 wall panel	8 balanced stereo line, 8 zones	RS232, Ethernet, Wall panel, front	2 HE	482 x 88 x 335 mm	4.84 kg

Example setup

Below we have the multi-zone audio matrix being used in an office area.

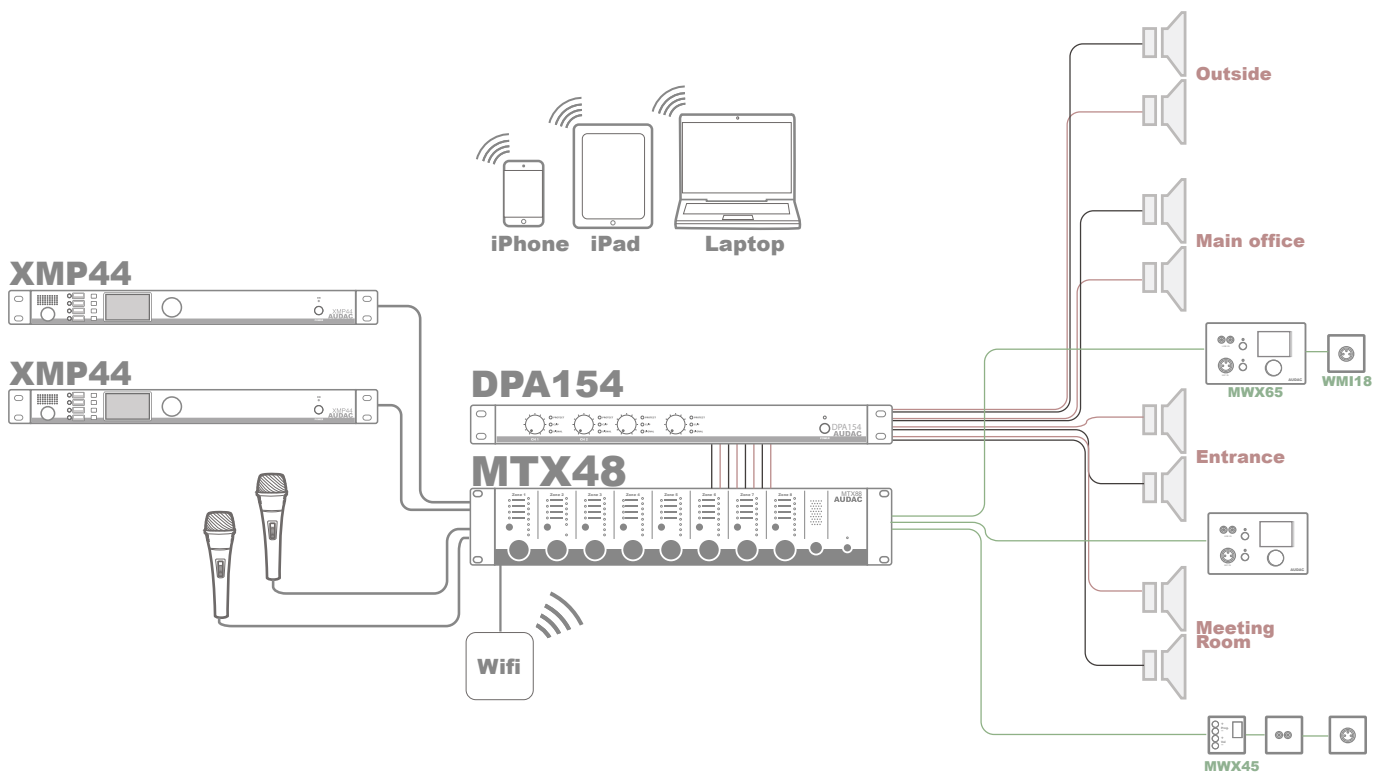
Two XMP44 devices are shown here, representing the possibility for adding any kind of audio source or media player to the system. Besides the available options, also computer, TV or even mobile devices can be connected as an audio source.

Computers throughout the building allow authorised personnel to access the matrix unit's advanced options or you can control the system by using your iPad or iPhone.

Two handheld microphones can be connected for e.g. presentations but you could replace these for a table top microphone or the MPX paging microphone.

All rooms inside the building have been given their own wall panel controls and extra audio inputs. This has been done in two ways, firstly by installing an MWX65 or by placing an MWX45 with line or microphone wall inputs.

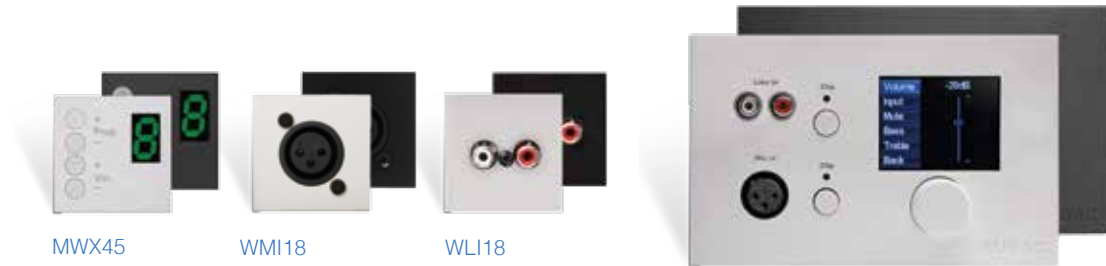
Don't forget these wall panels can combine together as you can see in the meeting room and main office.



MTX series

Peripherals and controllers

Designed to be used in combination with the MTX multi-zone audio matrixes, these peripherals provide the additional features necessary to locally expand your system.



Wall panels

Whether additional connectivity or controllability is required, these wall panels are instantly installed and only require a minimum of configuration. Simply connect them to your system using standard CAT5E (or better) wiring (up to 300 meters).

- MWX45 : zone selector and volume control
- WMI18 : XLR microphone input
- WLI18 : RCA Line input

Available sizes

45 x 45 mm : MWX45, WMI18, WLI18

MWX65

Connect and control your audio from any location you desire. This panel is both easy to install and configure. For added comfort, a built-in 2.5" display in combination with a push rotary button not only enables source selection and volume control but also opens other features of the MTX matrix. For local microphone and/or line level source applications, the panel is equipped with a mic and unbalanced stereo line input that can be locally mixed using the two volume dials. The MWX65 can also be linked through with a WMI and MWX45 wall panel and are available in black (/B) and white (/W).

Web control (Flash)

Control and configuration possibilities are offered from any device featuring a flash compatible web browser. Access is given through browsing to the unit's IP address, while the Flash-based user interface pops up. Various access levels (user and administrator) only allow authorized users to access the configuration of the system.



AUDAC Touch™ app

Full system control is made possible using the Audac-Touch™ application. This Android and iOS compatible application allows integration of various product types including audio players, matrix systems or any other supported products with each other. A wide variety of controls can be merged together as widgets in one dashboard, including output volume controls, source selection, radio station or track control, relay unit & 3rd party equipment control, ... Indicator widgets allow monitoring of currently playing tracks or complete playlists.



MPX series

Paging units

These paging microphones are designed as a 'plug-and-play' paging solution to work in combination with the MTX multi-zone audio matrixes.

This elegant and unobtrusive microphone will fit perfectly into any environment. Selecting zones is made comfortable and intuitive thanks to capacitive touch buttons integrated below its glass surface. To ensure calls come through as intended, integrated status LEDs display selected zones as well as the databus status. And, to ensure perfect intelligibility, a tiltable pipe-neck microphone with a cardioid pickup pattern is provided as

well as an integrated chime tone that can be played before each announcement. Connecting the paging microphone to the matrix is achieved with a provided fixed CAT5 of 2 meters. This distance can be extended to maximum 300 meters using CAT5E (or better) twisted pair cabling. For slightly larger systems, cascading several stations is possible using the priority-based databus in combination with optional junction boxes.



- ▶ Capacitive touch buttons
- ▶ Integrated chime
- ▶ Priority-based paging
- ▶ Selection & status indication LEDs



MPX48

4-zone paging microphone
for MTX48



MPX88

8-zone paging microphone
for MTX88

M2

Multimedia digital audio mixer



R2

Multi-zone digital audio matrix



Inputs	8 Balanced stereo line or mic inputs + 4 stereo unbalanced line (selectable)	8 unbalanced stereo line inputs
Wall panel inputs	8	8
Priority inputs	2 Balanced priority audio inputs, 2 Priority contact inputs & 4 software configurable priorities (all inputs)	2 Balanced priority audio inputs, 2 Priority contact inputs & 4 software configurable priorities (all inputs)
Outputs	8 balanced stereo line outputs	8 unbalanced stereo line outputs
Phantom power	48 V	
24V emergency power	✓	✓
Multiple input mixing	✓	
Automatic level control	✓ input	
Built-in voice file interface	SD card	
Preprogrammed events	256	256
Zone linking	✓	✓
Mono/Stereo switching	✓	
Digital audio filters	input / output	output
Talkover (ducking)	✓	
DSP power	high	medium
Input EQ	7-Band	
Output EQ	7-Band & 2-Band	2-Band
Audio delay	up to 2000 ms	
Feedback reduction	✓	
Output & global Scenes	8	
Output names assignment	✓	✓
Test signal generator	✓	✓
RS232 control port	✓	✓
RS485 peripheral ports	10	10
Integrated webserver (TCP/IP)	✓	✓
Dry contact outputs	8 x NO & NC	
Dry contact inputs	10	2
Front panel control	optional (M2DIS)	optional (R2DIS)
Peripheral expansion ports	10 (free configurable)	10 (free configurable)
Paging console connectivity	✓	✓
7" Touchscreen display kit	M2DIS (optional)	R2DIS (optional)
Power amplifier kit	POW2 (optional)	POW2 (optional)
Optical fiber kit	OPT2 (optional)	OPT2 (optional)
Web control	✓ (Flash)	✓ (Flash)
Audac Touch™ app	✓	✓
Wall panels	DW5066 + DW3020/4020	DW5066 + DW3020/4020

MTX88

Multi-zone audio matrix



MTX48

Multi-zone audio matrix



	2 mic, 4 unbalanced stereo line wall panel	2 mic, 4 unbalanced stereo line wall panel
Inputs		
Wall panel inputs	8	4
Priority inputs	Mic 1 & 2 & priority mute contact	Mic 1 & 2 & priority mute contact
Outputs	8 balanced stereo line outputs, 8 zones	4 balanced stereo line outputs, 4 zones
Phantom power	18 V	18 V
24V emergency power	✓	✓
Multiple input mixing		
Automatic level control		
Built-in voice file interface		
Preprogrammed events		
Zone linking		
Mono/Stereo switching	✓	✓
Digital audio filters		
Talkover (ducking)		
DSP power		
Input EQ	3-Band (Mic 1+2)	3-Band (Mic 1+2)
Output EQ	2-Band	2-Band
Audio delay		
Feedback reduction		
Output & global Scenes		
Output names assignment	✓	✓
Test signal generator		
RS232 control port	✓	✓
RS485 peripheral ports	9	5
Integrated webserver (TCP/IP)	✓	✓
Dry contact outputs		
Dry contact inputs		
Front panel control	✓	✓
Peripheral expansion ports	8 (one for each zone)	4 (one for each zone)
Paging console connectivity	✓	✓
7" Touchscreen display kit		
Power amplifier kit		
Optical fiber kit		
Web interface	✓ (Flash)	✓ (Flash)
Audac Touch™	✓	✓
Wall panels	WLI + WMI + MWX65 + 45	WLI + WMI + MWX65 + 45



PREAMPLIFIERS & MIXERS

Versatile audio signal pre-amplification and mixing solutions offering unmatched and intuitive controllability.

PRE series

6-Channel stereo preamplifiers



It's simple but versatile design makes the PRE series a multifunctional solution for installations where multiple voice and music sources needs to be mixed to one or two (only PRE26) output zones. The stereo design with six inputs allows to connect any type of audio source such as microphones and balanced or unbalanced line level sources.

Channels one and two are balanced inputs, allowing the connection microphone and

line level sources. They feature 3-band tone control, phantom power and talkover for priority announcements. The other inputs are one balanced and three unbalanced stereo line inputs allowing connection of any line level audio sources.

A master volume control for the output(s) including 2-band tone control and LED VU bar is located on the front panel, also accommodating each inputs mixing dial.



PRE16

6-channel stereo preamplifier

- ① Balanced stereo line output(s)
- ② 3 unbalanced stereo line inputs
- ③ Balanced stereo line output
- ④ 2 Balanced microphone inputs



PRE26

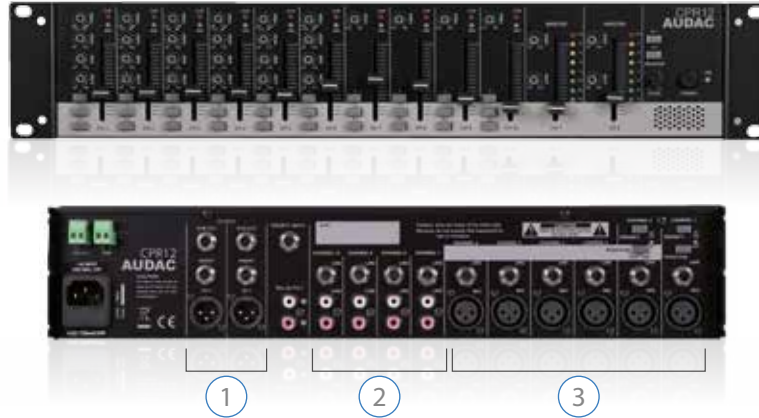
Two zone 6-channel stereo preamplifier

- ▶ Total of 6 inputs
- ▶ Mic with phantom, tone control & talkover
- ▶ 2-band output tone control
- ▶ Balanced stereo outputs

	THD+N	Signal / Noise	Frequency Response	Dimensions	Weight
PRE16	< 0.1 %	> 93 dB	20 Hz - 20 kHz	482 x 44 x 330 mm	3.75 kg
PRE26	< 0.1 %	> 93 dB	20 Hz - 20 kHz	482 x 44 x 330 mm	4 kg

CPR series

Two zone 10-channel preamplifier



CPR12

This multi-functional and easy to use 10-channel pre-amplifier is perfectly suited for public address installations with two output zones. Six of the inputs are selectable between microphone and line level and equipped with 3-band tone control. All six are switchable to phantom power while two of them allow priority announcements. The other four are stereo line inputs.

Each input is fitted with a gain and fader volume control fader on the front panel, including a PFL switch which allows pre-listening through the built-in speaker. Routing to one or both output

zones is possible through front located switches. Other included functions are a priority input, recording output and a 24V emergency power connection. The sub-out and insert connection allow the connection of additional devices such as equalizers.

- ① 1Link connections & balanced line outputs
- ② 4 Stereo line inputs
- ③ 6 Balanced mic / line inputs

CPR12	THD+N < 0.2 %	Signal / Noise > 93 dB	Frequency Resp 20 Hz - 20 kHz	Phantom power 15 V	Emergency power 24V DC	Dimensions 482 x 88 x 320 mm	Weight 5.26 kg
-------	------------------	---------------------------	----------------------------------	-----------------------	---------------------------	---------------------------------	-------------------

PMX series

12 Channel PA mixer

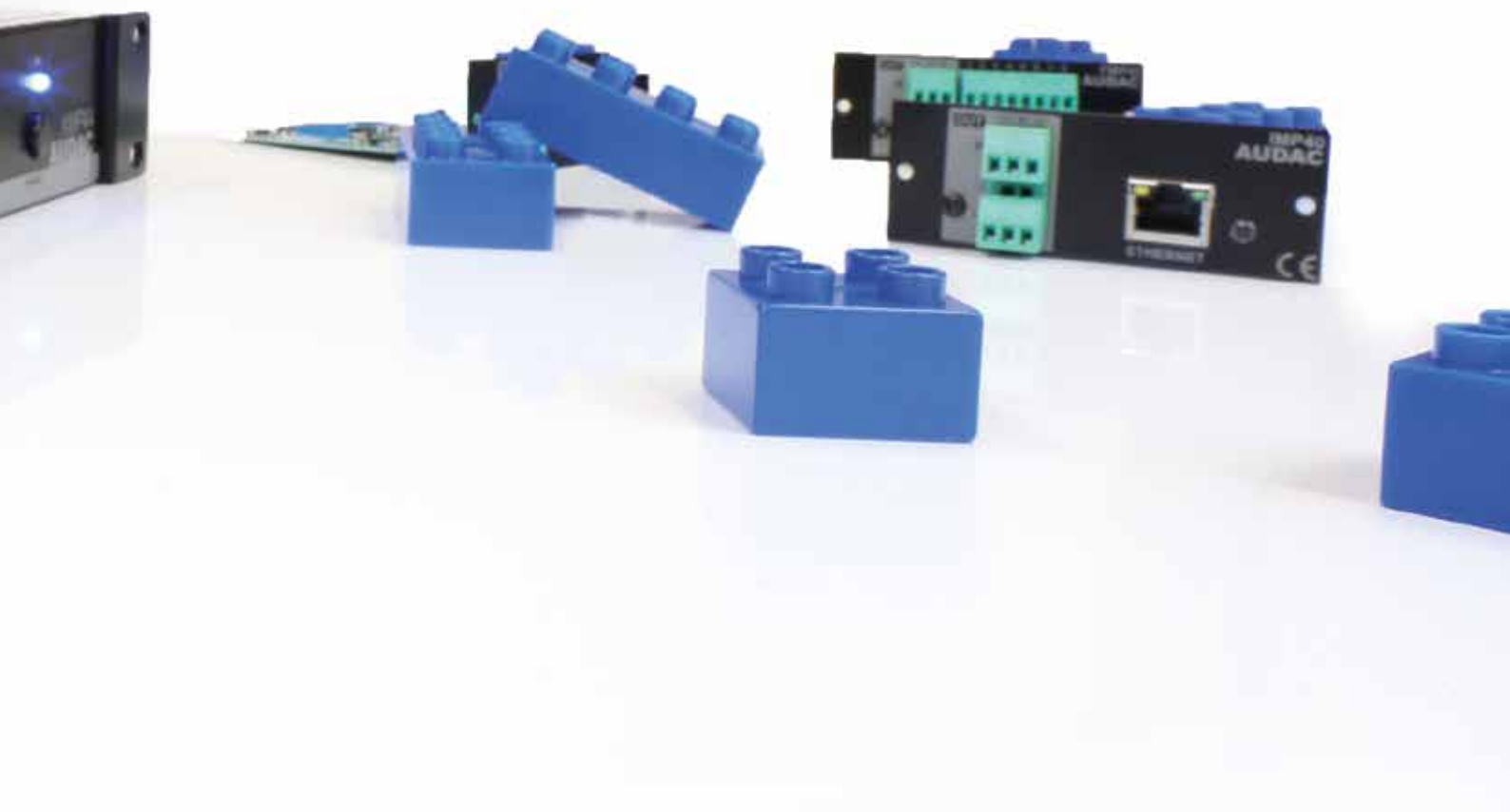


PMX124

Suitable for a wide range of mobile as well as fixed installations, this mixer is equipped with 6 mono and 4 stereo inputs. An impressive 100 high quality effects such as reverbs, delays, chorus, flange, etc. are available, contained in its integrated 24-bit DSP processor. Additional features include 3 band equalization, HPF filter, PFL and mute switches, and 48V phantom power. For 19" mounting purposes, two brackets are included.

PMX124	THD+N < 0.01 %	Crosstalk < 70 dB	Frequency Response 20 Hz - 20 kHz	DSP 24 bit / 100 presets	Dimensions 328 x 420 x 65 mm	Weight 3.4 kg
--------	-------------------	----------------------	--------------------------------------	-----------------------------	---------------------------------	------------------





MUSIC SOURCES

AUDAC pays great attention to their multimedia sources. The development of cutting edge digital audio technology has led to a complete range of sources that will inspire you.

Why not have it all?

Audio players reinvented

Web control (HTML5)

Control and configuration possibilities are offered from any connected device using web-control through a standard web-browser. Featuring the newest HTML5 technology, cross platform compatibility with Windows, Mac OS, Linux, Android and iOS is offered without any installed applications or web plugins. Various access levels (user and administrator) only allow authorized users to access the configuration of the system

AUDAC Touch™ app

Full system control is made possible using the Audac-Touch™ application. This Android and iOS compatible application allows integration of various product types including audio players, matrix systems or any other supported products with each other. A wide variety of controls can be merged together as widgets in one dashboard, including output volume controls, source selection, radio station or track control, relay unit & 3rd party equipment control, ... Indicator widgets allow monitoring of currently playing tracks or complete playlists.



Internet



DAB



FM



Media



Voice
File



Bluetooth



XMP44

Professional modular audio system



An audio player fulfilling specific needs of any user sounds hard to achieve. With this modular audio system, a fully flexible structure with 4 slots is at your disposal. Each slot allows implementation of any available module, selectable between FM tuners, DAB&DAB+ tuners, contact & time triggered voice file interfaces as well as internet audio players and USB media players/recorders. This results in a solution that will live up to the needs of any user that takes high regard of crystal clear audio reproduction.

Thanks to the 2.8" TFT display and the push rotary dial on its front, an unmatched user experience

is achieved. In combination with 4 tactile pushbuttons even unexperienced users can make adjustments and custom configurations with great ease. A USB interface for each module (4 in total) allows playback or storage of media & voice files, while pre-listening for each output is made possible through a built-in speaker.

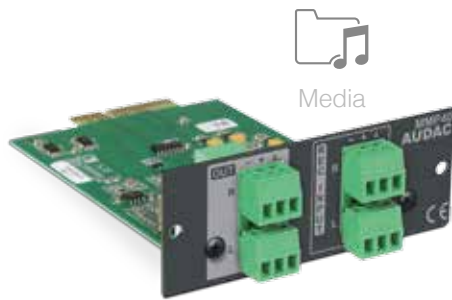
The XMP44 is both RS-232 and TCP/IP controllable allowing implementation with home & industrial automation systems. Using the freely available app and web-interface, control and configuring can be done from any portable device on any location and at any time.

- ① Built-in pre-listening speaker
- ② USB interface for each module slot (4x)
- ③ RS-232 and TCP/IP remote control connections
- ④ SourceCon™ module slots (4x)
- ▶ Fully flexible modular structure
- ▶ Stores up to 4 SourceCon™ modules
- ▶ 2.8" TFT display with intuitive user interface
- ▶ Control through front panel, Audac Touch™ & web-interface

SourceCon™ modules

SourceCon™ technology guarantees true plug & play implementation to any compatible device, allowing your media player to be tailored to fit any specific application. The wide variation of compatible modules and extensive configuration possibilities allows flexible combinations for any application.

Installation is done by sliding the modules into guide rails, while connections are made using board-edge connections. This allows simple and fast installation without requiring additional internal wiring or complex configuration. When inserted to a supporting slot, the module is instantly installed, discovered and ready for operation.



MMP40

- ▶ Audio playback & recording
- ▶ MP3, WMA, WAV, FLAC, OGG & AAC playback
- ▶ MP3, WAV & OGG recordings
- ▶ USB media support (storage & playback)
- ▶ Repeat & random, single & continuous play

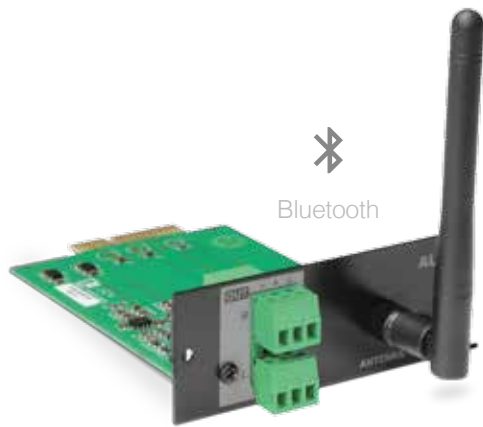
FMP40

- ▶ External (USB) & internal (Micro SD) media support
- ▶ MP3, WMA, WAV, FLAC, OGG & AAC playback
- ▶ 15 trigger contact inputs (NO/NC Configurable)
- ▶ 50 programmable triggers (timer and/or contact)
- ▶ Momentary / continuous contact triggering



DMP40

- ▶ DAB/DAB+/FM support
- ▶ RDS / Radiotext station information
- ▶ Preferential station storage (10 entries)
- ▶ Signal strength indication
- ▶ Splitter ASK40S available (see page 157)



BMP40

- ▶ Long distance Bluetooth transmission
- ▶ aptX® high quality & low latency technology
- ▶ Pairing (pin code) protection
- ▶ External & removable antenna
- ▶ Version 4.0 / output class 2

TMP40

- ▶ Worldwide FM band support
- ▶ RDS station information
- ▶ Preferential station storage (10 entries)
- ▶ Signal strength indication
- ▶ Splitter ASK40S available (see page 157)




IMP40

Internet audio player module



The IMP40 is a professional internet audio player module featuring unique Linum™ technology. This eliminates any unwanted behaviour such as sudden channel hopping or music stops. If any connection interruption occurs, the music playback will automatically switch to the inserted media carrier (USB drive) which avoids unpleasant silences or timeouts in background music applications. When the connection is recovered, the audio stream will be automatically and seamlessly restored afterwards.

It synchronizes with the vTuner database which contains over 30.000 channels, allowing selection on different criteria such as genre, location, language, ... while preference lists with a maximum up to 100 entries can be made. Custom audio streams can be added, allowing implementation of typical internet radio stations or broadcast audio streams for commercial, retail or public announcements.

- ▶ Linum™ technology
- ▶  database sync (30.000+ Channels)
- ▶ MP3, WMA & AAC radio station support
- ▶ USB media player backup (connection interruption)
- ▶ Custom audio stream selection

ANX44

Audio network interface 4 in / 4 out

The ANX44 is a Dante audio network interface for installation in the XMP44 professional modular audio system, featuring four input and four output channels. The installation of this optional module allows the XMP44 to be integrated into any DANTE enabled AV network and flawlessly transfer digital audio with any compatible product on the market.

The bidirectional audio exchange with the 4 SourceCon™ interface card slots allows distribution of the audio stream from the installed modules, allowing any radio tuner, media player, internet radio or other audio source distribution throughout your Dante network.

A truly plug & play solution is created when linking multiple DANTE enabled devices with each other on a standard IP network. It offers self-configuring solutions by using DHCP configuration, while the connection can be made to any existing 100 Mbit or 1 Gbit network infrastructure.

Bidirectional signal transmissions with a sampling frequency of 48 kHz and a bit depth of 24 bit are simultaneously possible on all in and output channels, while guaranteeing an incredibly low latency with a maximum up to 5 ms. (depending of the network occupation).

The ANX44 comes delivered as an installation kit, including all required accessories for integration into the XMP44 chassis. Installation shall be performed by qualified technicians.



- ▶ Integration into XMP44 chassis
- ▶ 4 input & 4 output channels
- ▶ 48 kHz / 24 bit digital audio transfer
- ▶ Compatible to any Dante-enabled device available on the market
- ▶ True plug & play solution
- ▶ Automatic device discovery & simple graphical routing

RMT40

RF Remote control



The RMT40 is a remote control allowing operation of various audio source devices. The 2.4 GHz wireless technology features a transmission distance of up to 10 meters, allowing out of sight operation with great advantage compared to regular IR systems. It includes an USB type receiver which shall be plugged into the supporting USB slot on the receiving device.

- ▶ 2.4 GHz wireless RF technology
- ▶ Multifunctional operation
- ▶ ~ 10 meter transmission range
- ▶ Out of sight operation
- ▶ Including USB receiver

MSP40

Media player / recorder



The MSP40 is a professional media player/recorder supporting a wide variation of compressed and lossless audio formats. Playback of MP3, OGG, AAC, FLAC, WMA and WAV is possible in numerous bit rates, while recordings are possible in MP3, OGG and WAV filetypes.

Both the balanced stereo line output (playback) and the balanced stereo line input (recording) are implemented on its panel, using two 3-pin terminal block connections.

Thanks to the 2.8" TFT display and the push rotary dial on its front, an unmatched user experience is achieved. In combination with 4 tactile pushbuttons even unexperienced users can make adjustments and custom configurations with great ease. Implementation with home & industrial automation systems is made possible through an RS-232 remote control port.

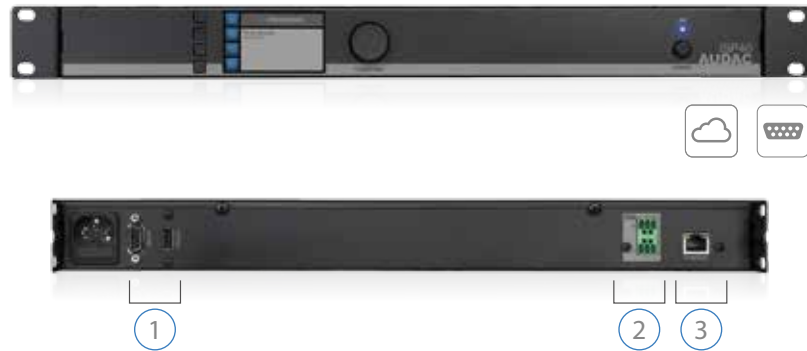
- ① RS-232 remote control and USB (update) connections
- ② Balanced stereo line output (terminal block)
- ▶ Audio playback & recording
- ▶ MP3, WMA, WAV, FLAC, OGG & AAC playback
- ▶ MP3, WAV & OGG recordings
- ▶ USB media support (storage & playback)
- ▶ Repeat & random, single & continuous play




Compatible with RMT40 remote control


ISP40

Internet audio player



The ISP40 is a professional internet audio player featuring the unique Linum™ technology. This technology is setting new standards in the world of internet audio players eliminating any unwanted behaviours such as sudden channel hopping, while seamlessly restoring audio streams after power or connection interruptions. Selections on different criteria such as genre, location, language, ... can be made out of over 30.000 channels using the  database, while custom streams can also be added to preference lists with up to 100 entries.

Thanks to the 2.8" TFT display and the push rotary dial on its front, an unmatched user experience is achieved. In combination with 4 tactile pushbuttons even unexperienced users can make adjustments and custom configurations with great ease. Implementation with home & industrial automation systems is made possible through RS-232 and TCP/IP remote control ports. Using the freely available app and web-interface, control and configuring can be done from any portable device on any location and at any time.

- ① RS-232 remote control and USB (update) connections
- ② Balanced stereo line output (terminal block)
- ③ RJ45 Ethernet connector
- ▶ Linum™ Technology
- ▶  database sync (30.000+ Channels)
- ▶ MP3, WMA, radio station support
- ▶ Custom audio stream selection
- ▶ Preferences list up to 100 entries



Compatible with RMT40 remote control

DSP40

DAB/DAB+/FM tuner



The DSP40 is a professional DAB/DAB+ and FM tuner, providing access to a wide variation of radio stations while guaranteeing a high-quality audio reproduction. Radio stations can be selected through manual or auto tuning, while preferred channels can be internally stored and easily recalled. Radio station information carried by RDS / Radiotext is displayed on the front panel, while other functions as mono/stereo switching (FM) always guarantees the best possible audio clarity.

Thanks to the 2.8" TFT display and the push rotary dial on its front, an unmatched user experience is achieved. In combination with 4 tactile pushbuttons even unexperienced users can make adjustments and custom configurations with great ease. Implementation with home & industrial automation systems is made possible through an RS-232 remote control port.

- ① RS-232 remote control and USB (update) connections
- ② Balanced stereo line output (terminal block)
- ③ F-Type antenna connection
- ▶ DAB/DAB+/FM support (87.5-108 MHz)
- ▶ RDS / Radiotext station information
- ▶ Manual and auto tuning
- ▶ Preference station storage
- ▶ Signal strength indication



Compatible with RMT40 remote control

TSP40

FM tuner



The TSP40 is a professional tuner with worldwide FM band support (64-108 MHz) featuring a great signal reception with high-quality audio reproduction. Radio stations can be selected through manual or auto tuning, while preferred channels can be internally stored and easily recalled. Radio station information carried by RDS is displayed on the front panel, while other functions as mono/stereo switching always guarantees the best possible audio clarity.

Thanks to the 2.8" TFT display and the push rotary dial on its front, an unmatched user experience is achieved. In combination with 4 tactile pushbuttons even unexperienced users can make adjustments and custom configurations with great ease. Implementation with home & industrial automation systems is made possible through an RS-232 remote control port.

- ① RS-232 remote control and USB (update) connections
- ② Balanced stereo line output (terminal block)
- ③ F-Type antenna connection
- ▶ Worldwide FM band support (64-108 MHz)
- ▶ RDS station information
- ▶ Manual and auto tuning
- ▶ Preference station storage
- ▶ Signal strength indication
- ▶ Individual traffic volume control

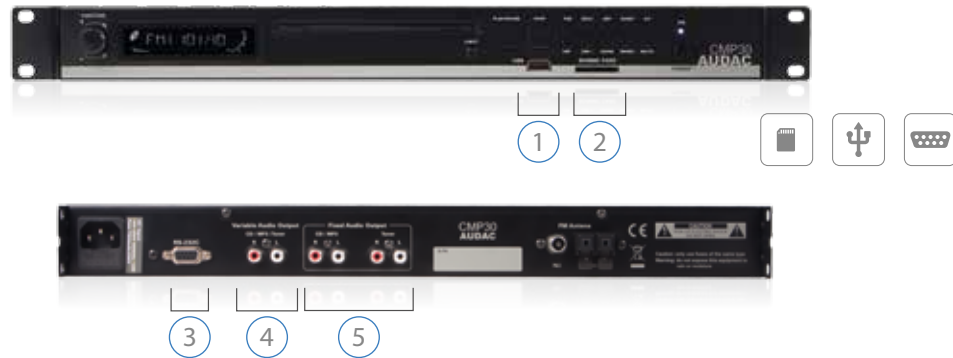


Compatible with RMT40 remote control



CMP30

Digital audio source - CD, MP3 & tuner



Its compact size makes this all-in-one multimedia player ideal for both fixed installations and mobile applications. It combines a CD player, an MP3 player and an AM/FM tuner with separate outputs: one line output for CD/MP3 and one line output for the tuner making it possible to operate

tuner and CD/MP3 simultaneously for multi-zone applications. In addition, there is a variable output for either CD, MP3 or the tuner. An RS232 control port will enable it to be integrated, for example, into a home automation system.

- ① USB slot
 - ② SD/MMC slot
 - ③ RS232 control port
 - ④ 1 variable audio input
 - ⑤ 2 fixed audio outputs
- ▶ CD, USB & SC/MMC media support
 - ▶ WAV, MP3 & WMA filetype support
 - ▶ AM/FM radio tuner
 - ▶ Simultaneous CD/MP3 and tuner operation
 - ▶ Repeat & random, single & continuous play

Suggested accessory

UMS08

8 GB premium quality USB memory stick



The UMS08 is a micro-sized USB stick measuring only 12 x 23 mm. Designed specifically for 19" appliances such as the CMP30, allowing you to store thousands of files.

AMPLIFIERS

High efficient multi-channel amplifiers for low impedance and 100V applications where single or multi-zone coverage is needed.



SMA & SMQ series

WaveDynamics™ Class-D power amplifiers

The SMA & SMQ series are Class-D power amplifiers featuring WaveDynamics™ audio processing technology. They come in different output configurations with two or four channels and are available in output powers of 350W, 500W and 750W. Their great flexibility and different configurations make it the solution for nearly every system, no matter if it's a fixed installation or a mobile application.

WaveDynamics™

A complete library of AUDAC loudspeaker and set solution presets is available for your projects, making it easy as picking the right file, loading it & play! Besides the optimal acoustic configurations, this library also includes the loudspeaker performance parameters providing a bulletproof protection for them.

The 7-Band fully parametric equalizer with adjustable frequency and Q-factor and Butterworth, Bessel and Linkwitz-Riley filters with selectable roll-off allow you to create custom configurations, tweak your setup to the finest detail and adapt to your room's acoustics. A delay function allows time-alignment of different speakers in your installation.

Configurations also allow you to bridge the outputs, double the output power of stereo channels to one mono channel or make a single three-channel amplifier driving a complete setup composed of stereo Mid/High frequency speakers and a bass cabinet.

Controllability

The operation and configuration of the device can be done in multiple ways. The most obvious way is by using the front panel controls, featuring a rotary selection dial and channel selection buttons with a clear and intuitive user interface on the 2.5" graphical LCD display.

Total system configurations for pre-defined set solutions can be loaded into the amplifier using the USB port.

Integration of the audio system into home and industrial automation systems is made easy through the RS232 connection & control port whereby functions such as input switching, volume adjustment, etc. can be controlled.

Flexibility

Every system comes with different requirements and every customer has his own preferences. Because of this, the structure is made as flexible as possible.

This is achieved by an input selection matrix.





Each of the input connections can be patched to any amplifier channel and contains software controllable gain. The different implementations of the in- and output connectors allow the easiest way of connection for every application, while allowing signal link through to other amplifiers.

Protection

Optimal protection is not only required for the listeners satisfaction, but can also be important for complying to the imposed regulations and guaranteeing the lifetime of the equipment. Because of this, protection precautions are implemented in different ways.

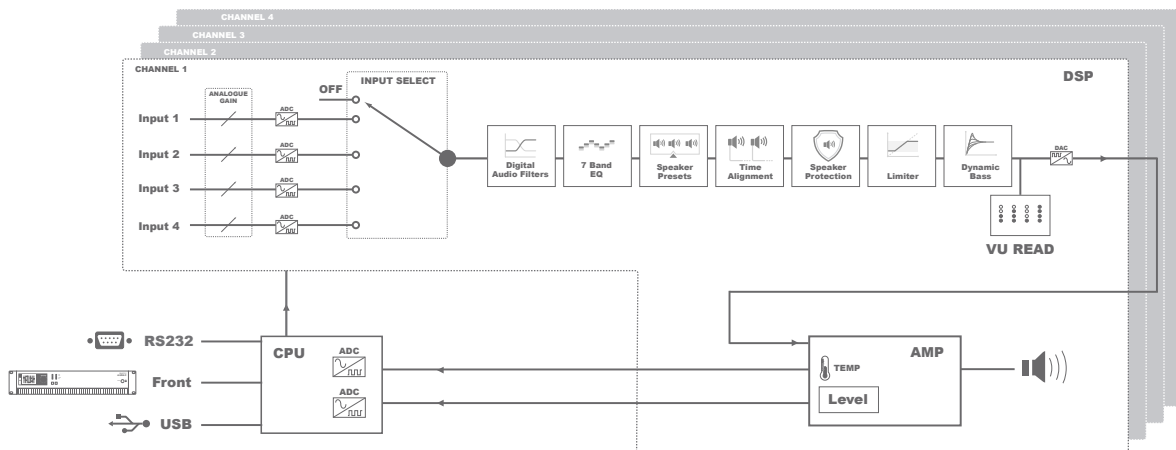
Firstly, user access is made possible on different levels. The device can be blocked or accessed in user or administrator level. Different levels allow different configuration and control functions, giving limited (Eg: only volume) control access to standard users and full configuration control to administrators. User restriction can be enabled and disabled and is given through password and/or USB-key.

Secondly, equipment protection is implemented by an output limiter which monitors the output power of every channel and will intervene when the output exceeds a certain level. The corresponding level can be software configured and is indicated in Watts. When the output limiter is configured at the maximum power of the loudspeaker, you can rest assured that the speakers won't be blown during your absence.

Lastly, the maximum volume for every channel can be set independently. This prevents users (having volume access) going over the limit. This can help you to keep the system compliant with imposed regulations and maintain the good relationship with the neighbours.

Efficiency

The switching mode power supply and Class-D amplifier technology in combination with the auto-standby mode for each separate amplifier channel brings an end to the era of the power-hungry amplifiers. In addition, these features also result in a lightweight amplifier which benefits the customer when used in mobile applications.



SMA series

WaveDynamics™ dual-channel power amplifiers



The features and availability in different output powers make this Class-D dual-channel power amplifier series ideal for both fixed and mobile applications. Whether accessing it on an administrator or a user level, configuration is made easy using a WaveDynamics™ DSP processor in combination with a front facing 2.5" LCD display and control buttons. Acoustic optimization can be achieved using available Butterworth, Bessel and Linkwitz-Riley filters with selectable roll-off which can be configured as Low / High & Band Pass, adjustable 7-Band

equalization and Q-factor. Other provided functions include delay, dynamic bass boost, output power limiting while the input selection matrix allows for great flexibility. For complete system integration, it has an RS232 control port. AUDAC provides a complete library of presets for its loudspeakers ensuring the best acoustical performance with a bullet-proof loudspeaker protection. These can be uploaded using the USB input that can also be used for making a backup of your work.

- ① Speakon compatible & terminal block output connections
- ② RS-232 control and DANTE expansion port
- ③ XLR & terminal block input & linkthrough connections
- ▶ Lightweight class-D amplifier
- ▶ Advanced DSP and loudspeaker management
- ▶ 2.5" LCD display with intuitive user interface
- ▶ WaveDynamics™ loudspeaker & set configurations
- ▶ RS-232 control and DANTE compatibility (optional)

	Stereo @ 4 Ω	Stereo @ 8 Ω	Bridge @ 8 Ω	THD+N	Signal/Noise	Freq Response	Dimensions	Weight
SMA350	2 x 350W	2 x 220W	700W	< 0.05 %	> 90 dB	20 Hz - 20 kHz	482 x 88 x 420 mm	7.50 kg
SMA500	2 x 500W	2 x 300W	1000W	< 0.05 %	> 90 dB	20 Hz - 20 kHz	482 x 88 x 420 mm	7.75 kg
SMA750	2 x 750W	2 x 380W	1500W	< 0.05 %	> 90 dB	20 Hz - 20 kHz	482 x 88 x 420 mm	8.00 kg

SMQ series

WaveDynamics™ quad-channel power amplifiers



The features and availability in different output powers make this Class-D quad-channel power amplifier series ideal for both fixed and mobile applications. Whether accessing it on an administrator or a user level, configuration is made easy using a WaveDynamics™ DSP processor in combination with a front facing 2.5" LCD display and control buttons. Acoustic optimization can be achieved using available Butterworth, Bessel and Linkwitz-Riley filters with selectable roll-off which can be configured as Low / High & Band Pass, adjustable 7-Band

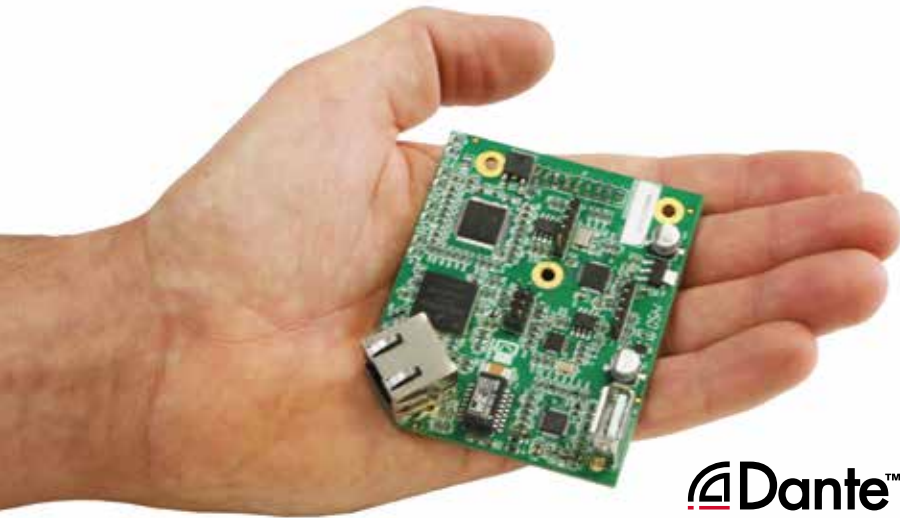
equalization and Q-factor. Other provided functions include delay, dynamic bass boost, output power limiting while the input selection matrix allows for great flexibility. For complete system integration, it has an RS-232 control port. AUDAC provides a complete library of presets for its loudspeakers ensuring the best acoustical performance with a bullet-proof loudspeaker protection. These can be uploaded using the USB input that can also be used for making a backup of your work.

- ① Speakon compatible & terminal block output connections
- ② RS-232 control and DANTE expansion port
- ③ XLR & terminal block input & linkthrough connections
- ▶ Lightweight class-D amplifier
- ▶ Advanced DSP and loudspeaker management
- ▶ 2.5" LCD display with intuitive user interface
- ▶ WaveDynamics™ loudspeaker & set configurations
- ▶ RS-232 control and DANTE compatibility (optional)

	Stereo @ 4 Ω	Stereo @ 8 Ω	Bridge @ 8 Ω	THD+N	Signal/Noise	Freq Response	Dimensions	Weight
SMQ350	4 x 350W	4 x 220W	2 x 700W	< 0.05 %	> 90 dB	20 Hz - 20 kHz	482 x 88 x 420 mm	8.15 kg
SMQ500	4 x 500W	4 x 300W	2 x 1000W	< 0.05 %	> 90 dB	20 Hz - 20 kHz	482 x 88 x 420 mm	8.35 kg
SMQ750	4 x 750W	4 x 380W	2 x 1500W	< 0.05 %	> 90 dB	20 Hz - 20 kHz	482 x 88 x 420 mm	8.55 kg

ANI series

WaveDynamics™ Dante network interfaces



The SMA & SMQ WaveDynamics™ power amplifiers capabilities have now been expanded by the introduction of the new ANI interface modules, allowing easy networking with any DANTE enabled product. Using these modules, the SMA & SMQ series further strengthens its position as the most complete and versatile amplifier series in its range.

The ANI interface module comes in two versions with 2x2 for SMA and 4x4 channels for SMQ, providing connection to any DANTE-powered AV network. This allows 48 kHz – 24 bit audio transfer from any DANTE source or mixer with incredibly low latency. The use of standard 100 Mbit or 1 Gbit network equipment in combination with other features such as automatic device

discovery, simple graphical routing and flawless incorporation between hundreds of DANTE enabled products available in the market, offers a no-hassle, self-configuring and true plug-and-play digital audio networking solution. Music sources or mixers without any DANTE interface can be connected to the analog inputs on the DANTE-equipped amplifier and broadcast the signal to other devices in the network.

With the development of the ANI interface modules, AUDAC takes its first steps into the era of audio transfer over standard network infrastructure. Further developments in this field have already been planned, offering a larger range of related products.

ANI22

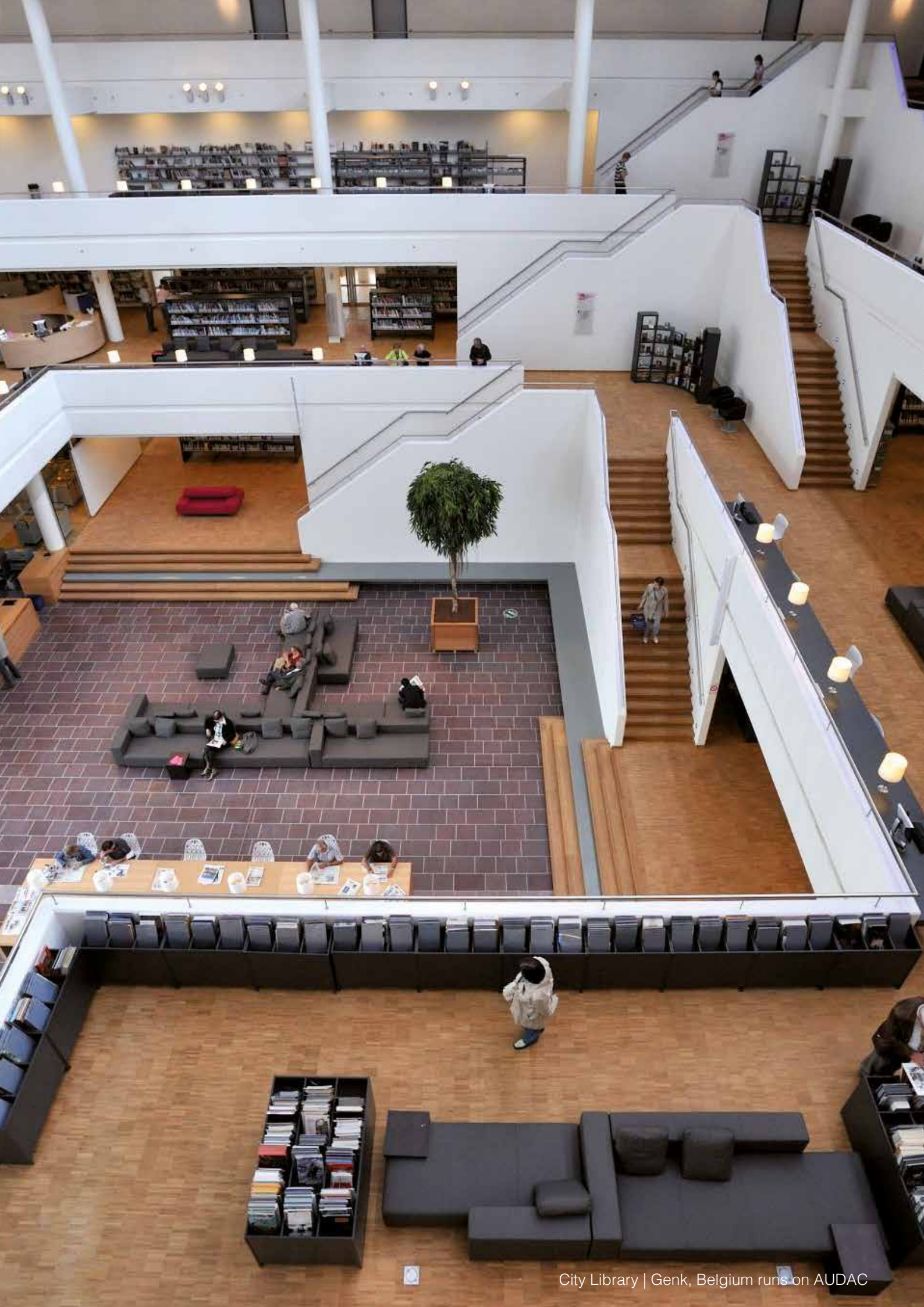
Audio Network Interface 2 in / 2 out (for SMA amplifiers)

ANI44

Audio Network interface 4in / 4 out (for SMQ amplifiers)



- ▶ 48 kHz / 24 bit digital audio transfer
- ▶ Incredibly low latency (2 / 5 ms)
- ▶ Works with standard 100 Mbit or 1Gbit networking equipment
- ▶ Compatible with any Dante-enabled device available on the market
- ▶ True plug&play solution (DHCP & automatic device discovery)
- ▶ Automatic device discovery & simple graphical routing



DPA152 & DPA252

Dual-channel Class-D amplifiers



Their weight and compact size makes these single rack space amplifiers ideal for both fixed and mobile installations. Their use of Class-D technology ensures excellent efficiency as well as outstanding sound quality. Thanks to the complete passively cooled entity only a minimal of maintenance is needed, while ensuring maximum reliability.

Various specific functions and advanced circuitry guarantees an which protection against DC malfunctioning, short circuit, overheating and overload. Signal input connections are integrated with balanced XLR connectors, and signal link through is possible using the XLR output connectors. Outputs are connected using both Speakon compatible and terminal block connectors.

- ① Speakon compatible & terminal block output connections
- ② XLR input & linkthrough connections with operation mode switch

- ▶ Lightweight class-D amplifier
- ▶ Compact size, high performance
- ▶ Convection cooled
- ▶ Advanced protection circuit
- ▶ Stereo, parallel & bridged mode

	Stereo @ 4 Ω	Stereo @ 8 Ω	Bridge @ 8 Ω	THD+N	Signal / Noise	Freq Response	Dimensions	Weight
DPA152	2 x 150W	2 x 80W	300W	< 0.1 %	> 100 dB	20 Hz - 20 kHz	482 x 44 x 330 mm	4.37 kg
DPA252	2 x 250W	2 x 130W	500W	< 0.1 %	> 100 dB	20 Hz - 20 kHz	482 x 44 x 330 mm	4.77 kg

DPA73 & DPA153

Triple-channel Class-D amplifiers



Their weight and compact size makes these single rack space amplifiers ideal for both fixed and mobile installations. Their use of Class-D technology ensures excellent efficiency as well as outstanding sound quality. Thanks to the complete passively cooled entity only a minimal of maintenance is needed, while ensuring maximum reliability.

The triple channel construction consists of two (stereo) satellite channels and an additional subwoofer channel. In combination with

the integrated active crossover network, it offers a complete solution for compact stereo applications with a bass cabinet.

Various specific functions and advanced circuitry guarantees an optimal protection against DC malfunctioning, short circuit, overheating and overload. Signal input connections are integrated with balanced XLR connectors, and signal link through is possible using the XLR output connectors. Outputs are connected using terminal block connectors.

- ① Terminal block output connections
- ② XLR input & linkthrough connections with operation mode & crossover switch
- ▶ Lightweight class-D amplifier
- ▶ Internal active crossover network (sub / top)
- ▶ Compact size, high performance
- ▶ Convection cooled
- ▶ Advanced protection circuit

	Stereo @ 4 Ω	Stereo @ 8 Ω	Sub @ 8 Ω	THD+N	Signal / Noise	Freq Response	Dimensions	Weight
DPA73	2 x 75W	2 x 50W	150W	< 0.1 %	> 90 dB	20 Hz - 20 kHz	482 x 44 x 330 mm	4.58 kg
DPA153	2 x 150W	2 x 80W	300W	< 0.1 %	> 90 dB	20 Hz - 20 kHz	482 x 44 x 330 mm	4.83 kg

DPA74 & DPA154

Quad-channel Class-D amplifiers



Their weight and compact size makes these single rack space amplifiers ideal for both fixed and mobile installations. Their use of Class-D technology ensures excellent efficiency as well as outstanding sound quality. Thanks to the complete passively cooled entity only a minimal of maintenance is needed, while ensuring maximum reliability.

Various specific functions and advanced circuitry guarantees an optimal protection against DC malfunctioning, short circuit, overheating and overload. Signal input connections are integrated with balanced XLR connectors, and signal link through is possible using the XLR output connectors. Outputs are connected using terminal block connectors.

① Terminal block output connections

② XLR input & linkthrough connections with operation mode switch

▶ Lightweight class-D amplifier

▶ Compact size, high performance

▶ Convection cooled

▶ Advanced protection circuit

▶ Stereo, parallel & bridged mode

	Stereo @ 4 Ω	Stereo @ 8 Ω	Bridge @ 8 Ω	THD+N	Signal / Noise	Freq Response	Dimensions	Weight
DPA74	4 x 75W	4 x 50W	2 x 150W	< 0.1 %	> 90 dB	20 Hz - 20 kHz	482 x 44 x 330 mm	4.57 kg
DPA154	4 x 150W	4 x 80W	2 x 300W	< 0.1 %	> 90 dB	20 Hz - 20 kHz	482 x 44 x 330 mm	4.82 kg

DPA616

Sixteen-channel Class-D amplifiers



Its size makes this dual rack space amplifier ideal for multi-zone audio distribution systems with up to 8 stereo or 16 mono zones. Its use of Class-D technology ensures excellent efficiency as well as outstanding sound quality. For added reliability, an advanced circuitry protects them against DC malfunctioning, short circuiting, overheating and overloading.

Sixteen 3-pole signal input Euro-terminal blocks are provided with, per channel pair, a mode switch for stereo or parallel & bridged operation. For added practicality, each individual channel is fitted with a separate gain control potentiometer.

- ① Terminal block input connections with gain control
- ② Terminal block output connections

- ▶ 16 Channel design (8 channel bridged)
- ▶ Lightweight class-D amplifier
- ▶ Compact size, high performance
- ▶ Advanced protection circuit
- ▶ Stereo, parallel & bridged mode

	Stereo @ 4 Ω	Stereo @ 8 Ω	Bridge @ 8 Ω	THD+N	Signal / Noise	Freq Response	Dimensions	Weight
DPA616	16 x 60W	16 x 30W	8 x 120W	< 0.1 %	> 100 dB	20 Hz - 20 kHz	482 x 88 x 322 mm	8.2 kg

AMP series

Mini stereo amplifiers

Perfect for small installations where relatively low power is required, these compact sized power amplifiers offer multiple control and source connectivity possibilities.

Extremely energy efficient thanks to the Class-D, standby mode and included switching power supply they use makes them compliant with the highest energy efficiency and environmental requirements.



AMP20MK2

Mini stereo amplifier

Ideal for applications requiring compact and economical audio solutions such as such as class rooms, offices and meeting rooms, ... The compact size and very high efficiency allows it to be hidden in a closet, on a false ceiling or mounted under a desk or table.

The combination of a stereo balanced line and microphone input makes it perfectly suited for applications where used in combination with projection screens and video sources while a microphone for presentations is connected.

Controlling the volume remotely is also possible using either an optional VC3208 controller and/or a WP523 remote wall mixer with built-in, locally mixable, line and microphone inputs.



Compatible products (optional)



WP523 wall mixer



VC3208 volume controller

Optional mounting bracket



Compatible with a variation of MBS1xx series installation accessories, see page 155 of this catalogue for more details.

AMP20MK2	Stereo @ 4 Ω	Stereo @ 8 Ω	Bridge @ 8 Ω	Efficiency	Freq Response	Dimensions	Weight
	2 x 15W	2 x 7.5W	1 x 30W	87% @ Max	20 Hz - 20 kHz	108 x 44 x 165 mm	0.80 kg



AMP523

Web-based mini stereo amplifier

Ideal for applications requiring compact audio solutions with extended connectivity and controllability possibilities such as meeting and conference rooms. A variety of line level sources (up to 4) such as laptops or media players can get connected in combination with a microphone. The microphone input contains priority offering automatic switching from background music to speech when the presentation begins.

The AMP523 is RS-232, RS-485 and TCP/IP controllable allowing implementation with home & industrial automation systems. Using the freely available app and web-interface, control and configuring can be done from any portable device on any location and at any time.

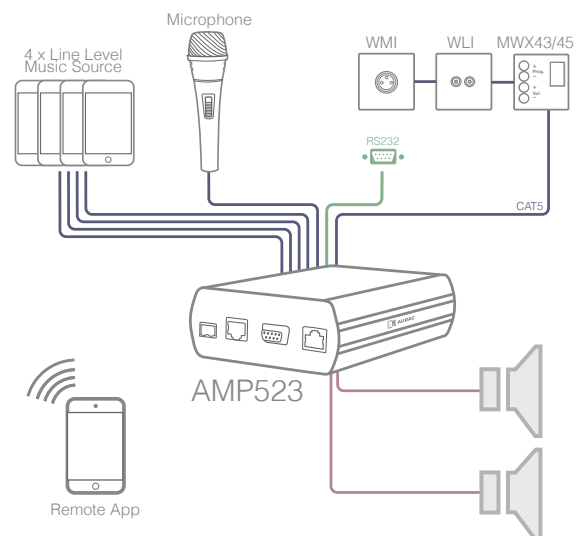


Optional mounting bracket



MSB200

- ▶ 4 Unbalanced stereo line inputs
- ▶ Balanced mic input with phantom & priority
- ▶ TCP/IP, RS-232 & RS-485 control possibilities
- ▶ Integrated 2 x 15 Watt amplifier



AMP523	Stereo @ 4 Ω	Stereo @ 8 Ω	Bridge @ 8 Ω	Efficiency	Freq Response	Dimensions	Weight
	2 x 15W	2 x 7.5W	1 x 30W	87% @ Max	20 Hz - 20 kHz	110 x 44 x 160 mm	0.81 kg

COM3 & COM6

Public address amplifiers



The COM3 and COM6 public address amplifiers are offering solutions for small to medium size commercial sound systems. Designed with a wide variation of input possibilities, an enormous flexibility for numerous applications is offered.

Three input channels with individual level control allow connectivity and mixing to a wide variation of music sources. One microphone input containing priority and two inputs selectable between stereo unbalanced line (RCA) and microphone (6.3 mm Jack) allow connection for any source such as CD-player, music computer

or portable device, or enable to expand the total microphone count to 3.

The output level is indicated on a VU-bar and controlled using a master volume control accompanied with 2-band tone regulation. Various specific functions and advanced circuitry guarantees an optimal protection against DC malfunctioning, short circuit, overheating and overload. The output is selectable between high 100V, 70V, 25V or 4Ω levels and connected by terminal block output connections.

- ① Terminal block output connections (100V, 70V, 25V & 4Ω)
- ② Priority line (tele-paging) input connection
- ③ Mic / Line input connections
- ④ Priority mic input connection
- ▶ Compact tabletop design
- ▶ Low impedance & constant voltage output
- ▶ Variety of inputs (mic & line)
- ▶ Priority line & microphone input
- ▶ Individual input controls



	RMS power	THD+N	Signal / Noise	Freq Response	Output voltage / Impedance	Dimensions	Weight
COM3	30W	< 1%	> 100 dB	80 Hz - 18 kHz	100V / 70V / 25V / 4 Ω	270 x 76 x 230 mm	4.5 kg
COM6	60W	< 1%	> 100 dB	80 Hz - 18 kHz	100V / 70V / 25V / 4 Ω	270 x 76 x 230 mm	5.25 kg

COM12MK2 & COM24MK2

Public address amplifiers



The COM12MK2 and COM24MK2 public address amplifiers are offering solutions for small to medium size commercial sound systems. Designed with a wide variation of input possibilities, an enormous flexibility for numerous applications is offered.

Six input channels with individual level control allow connectivity and mixing to a wide variation of music sources. Four balanced microphone inputs (XLR) containing phantom power and priority (2x) allow connection for almost any microphone. Two inputs selectable between stereo unbalanced line (RCA) and microphone (6.3 mm Jack) allow connection for any source such as CD-player, music computer or portable device, or enable to expand the total microphone count to 6.

The output level is controlled using a master volume control accompanied with 2-band tone regulation. The level is indicated with a 5-segment VU-bar while output selection is made possible using an integrated 5-zone speaker switcher.

Various specific functions and advanced circuitry guarantees an optimal protection against DC malfunctioning, short circuit, overheating and overload. Other present features are a link in- and output, an amp input and pre-amp output, an integrated chime module, a remote microphone input, the possibility to connect a telephone pager unit and a priority mute contact that allows coupling and muting via an external alarm system.

- | | |
|--|---|
| ① Terminal block output connections | ▶ 5-Zone output selector |
| ② Amplifier link in & outputs | ▶ Low impedance & constant voltage output |
| ③ Remote inputs, chime & mute contacts | ▶ Variety of line & microphone inputs |
| ④ Mic / Line input connections | ▶ Phantom power (4x) & priority (2x) on mic |
| ⑤ Microphone inputs with priority (2x) & phantom | ▶ Table top or 19" rack installation |

	RMS power	THD+N	Signal / Noise	Freq Response	Output voltage / Impedance	Dimensions	Weight
COM12MK2	120W	< 0.5 %	> 90 dB	20 Hz - 20 kHz	100V / 4 Ω	420 x 86 x 230 mm	9.7 kg
COM24MK2	240W	< 0.5 %	> 90 dB	20 Hz - 20 kHz	100V / 4 Ω	420 x 86 x 230 mm	11 kg

100V systems

The possibilities of 100V constant voltage distributed audio systems is still an unclear concept for many people, although it is very frequently used and technically reliable solution for a wide variation of applications, mainly larger public address systems.

When looking at a 100 Volt audio system, the maximum load is determined by the maximum capacity of the connected amplifier in the system. When having an 100V power amplifier with a maximum power handling of 120 Watt, the connected speaker configuration can be freely chose, as long as the total connected power doesn't exceed the maximum ratings of the connected amplifier. Practically, we recommend to always choose an amplifier having an overhead of 10%, compared to the total power of connected speakers.

When some speakers are switched off or disconnected in an 100V audio system, this doesn't have any influence on the volume of the other speakers connected in the same network. This allows volume control of each individual speaker, using individual volume controllers. The power of the system is determined by the impedance of the connected speakers. When

more speakers get connected to one line, the impedance of the line is lowered, which results in a higher current and load to the amplifier.

The used speakers are usually standard low impedance speakers (8 Ω) fitted with line transformers, frequently having various power tapings on the 100 Volt side. These power tapings allows the speaker wattage / volume to be selected, typically for applications where the maximum volume is not required. (allowing to connect more speakers in the same network)

The below impedance list also displays the power ratings for 70V and 50V distributed audio systems besides the 100V ratings. Various amplifiers also include the output terminals for 70V and 50V systems. The power at 70V output voltage is half the power of 100V output voltage, and the power of 50V output voltage is half the power of 70V output voltage. These output tapings can be useful for applications which needs to be extended with additional speakers, but the maximum volume capabilities are not being used. When lowering the line voltage, the number of connected speakers can get doubled.

Impedance	100 V	70 V	50 V
20.000 Ω	0.5W	0.25W	0.12W
10.000 Ω	1W	0.5W	0.25W
5.000 Ω	2W	1W	0.5W
3.333 Ω	3W	1.5W	0.75W
2.500 Ω	4W	2W	1W
2.000 Ω	5W	2.5W	1.25W
1.666 Ω	6W	3W	1.5W
1.000 Ω	10W	5W	2.5W
666 Ω	15W	7.5W	3.75W
500 Ω	20W	10W	5W
400 Ω	25W	12.5W	6.25W
333 Ω	30W	15W	7.5W
250 Ω	40W	20W	10W
200 Ω	50W	25W	12.5W
166 Ω	60W	30W	15W
133 Ω	75W	37.5W	18.75W
100 Ω	100W	50W	25W
83 Ω	120W	60W	30W
66 Ω	150W	75W	37.5W
50 Ω	200W	100W	50W
52 Ω	240W	120W	60W

CPA series

100V power amplifiers



These professional single-channel power amplifiers are designed to be used in any 100V PA system. For greater flexibility, they are equipped with both high and a low impedance power outputs for accordance with the attached speakers. For security and reliability, a 24V DC backup battery connection is available as well as a built-in multipurpose protection circuit that

protects against DC malfunction, short circuit, overheating, overload and limits the signal when necessary.

Besides a balanced input and link through, features also include a 400 Hz high-pass filter switch and a gain adjustment potentiometer.

- ① Mains & emergency power (24 V DC) connections
- ② Terminal block output connections (100V, 70V, 25V & 4Ω)
- ③ XLR input & linkthrough connections with gain control & HPF switch
- ▶ Class A/B amplifier technology
- ▶ 24 Volts emergency power operation
- ▶ Advanced protection circuit
- ▶ Ground lift & high-pass filter switch

	RMS power	THD+N	Signal / Noise	Freq Response	Output voltage / Impedance	Dimensions	Weight
CPA12	120W	< 1 %	> 90 dB	70 Hz - 18 kHz	100V / 70V / 4 Ω	482 x 88 x 340 mm	10.5 kg
CPA24	240W	< 1 %	> 90 dB	70 Hz - 18 kHz	100V / 70V / 4 Ω	482 x 88 x 340 mm	13.0 kg
CPA36	360W	< 1 %	> 90 dB	70 Hz - 18 kHz	100V / 70 V / 4 Ω	482 x 88 x 340 mm	15.1 kg

CAP2 series

Dual-channel 100V power amplifiers



These professional dual-channel power amplifiers are designed to be used in any 100V PA system. Their use of Class-D technology in combination with switching power supplies ensure excellent efficiency and reliability. To avoid overheating, a temperature controlled fan constantly keeps all parts within the right operation range, while avoiding an excessive buzz.

A built-in multipurpose protection circuit protects against DC malfunction, short circuit, overheating, overload and limits the signal when necessary. Both balanced XLR signal inputs and link-throughs are provided with a selectable high-pass filter switch (400 Hz) and a gain adjustment potentiometer for each channel. The output connections are performed using terminal block connectors.

- ① Terminal block output connections
- ② XLR input & linkthrough connections with gain control & HPF switch
- ▶ High efficiency class-D amplifier
- ▶ Compact size, high performance
- ▶ Advanced protection circuit
- ▶ High-pass filter switch

	RMS power	THD+N	Signal / Noise	Freq Response	Output voltage	Dimensions	Weight
CAP224	2 x 240W	< 0.3 %	> 100 dB	50 Hz - 22 kHz	100V	482 x 88 x 420 mm	7.2 kg
CAP248	2 x 480W	< 0.3 %	> 100 dB	50 Hz - 22 kHz	100V	482 x 88 x 420 mm	7.5 kg

CAP4 series

Quad-channel 100V power amplifiers



These professional quad-channel power amplifiers are designed to be used in any 100V PA system. Their use of Class-D technology in combination with switching power supplies ensure excellent efficiency and reliability. To avoid overheating, a temperature controlled fan constantly keeps all parts within the right operation range, while avoiding an excessive buzz.

A built-in multipurpose protection circuit protects against DC malfunction, short circuit, overheating, overload and limits the signal when necessary. Both balanced XLR signal inputs and link-throughs are provided with a selectable high-pass filter switch (400 Hz) and a gain adjustment potentiometer for each channel. The output connections are performed using terminal block connectors.

- ① Terminal block output connections
- ② XLR input & linkthrough connections with gain control & HPF switch

- ▶ Lightweight class-D amplifier
- ▶ Compact size, high performance
- ▶ Advanced protection circuit
- ▶ High-pass filter switch

	RMS power	THD+N	Signal / Noise	Freq Response	Output voltage / Impedance	Dimensions	Weight
CAP412	4 x 120W	< 0.3 %	> 100 dB	50 Hz - 22 kHz	70V / 100V / 4 Ω	482 x 88 x 420 mm	14.8 kg
CAP424	4 x 240W	< 0.3 %	> 100 dB	50 Hz - 22 kHz	100V	482 x 88 x 420 mm	8.35 kg
CAP448	4 x 480W	< 0.3 %	> 100 dB	50 Hz - 22 kHz	100V	482 x 88 x 420 mm	8.85 kg

TRU812
AUDAC

TRANSFORMERS

Large choice of single- and multi-channel speaker line transformers, as well as ground loop isolators.

TRU series

Line transformer units



Consisting of four or eight toroidal line transformers, these units are designed for using standard low impedance power amplifiers in large 100V, 70V or 50V public address audio systems.

The input impedances are selectable between 4 and 8Ω and different models are offering various power ratings for use with different amplifier models. An internal decoupling network allows these transformers for being used in combination with Class-D power amplifiers.



TRU425
4-channel line transformer units



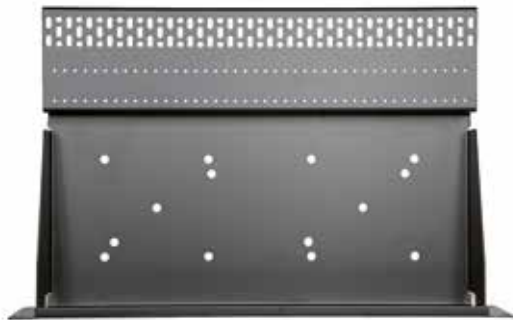
TRU812
8-channel line transformer unit

- ① Terminal block output connections (4-pin)
- ② Terminal block input connections (3-pin)

	Output power	Output tap @ 100V	Output tap @ 70V	Output tap @ 50V	Freq Response	19" unit height	Dimensions	Weight
TRU425	4 x 250W	40 Ω	20 Ω	10 Ω	35 Hz - 20 kHz	1 HE	482 x 44 x 322 mm	11.9 kg
TRU812	8 x 120W	83.3 Ω	41.7 Ω	20.8 Ω	35 Hz - 20 kHz	2 HE	482 x 88 x 322 mm	19.1 kg

TR3 series

Installation plates & toroidal audio line transformers



TR3000



The TR3000 is a range of line transformer combinations, existing of the TR3000 19" installation plate and several line transformers.

The TR3000 is a 19" 2HE installation plate to mount the TR3000 series line transformers. On this plate almost any combination of line transformers can be mounted, providing a stable and rigid construction for any 100V application. Depending on the power of the desired transformer, up to 6 transformers can be mounted on the T3000 installation plate.

The TR3xxx offers a range of line transformers with a power ranging from 30W up to 480W.

There are different tapings available for 50V, 70V and 100V lines and the low impedance side is selectable between 2Ω, 4Ω and 8Ω.

All these transformers are designed to be mounted on the TR3000 installation plate and are supplied with all necessary accessories for mounting.

	Max power	Connectors	Construction	Power taps	Impedance	Dimensions	Weight
TR3030	30W	20 cm cable	copper	50V / 70V / 100V	2 / 4 / 8 Ω	Ø 80 x 50 mm	950 g
TR3060	60W	20 cm cable	copper	50V / 70V / 100V	2 / 4 / 8 Ω	Ø 85 x 60 mm	1.27 kg
TR3120	120W	20 cm cable	copper	50V / 70V / 100V	2 / 4 / 8 Ω	Ø 105 x 65 mm	2.42 kg
TR3240	240W	20 cm cable	copper	50V / 70V / 100V	2 / 4 / 8 Ω	Ø 130 x 65 mm	4.5 kg
TR3480	480W	20 cm cable	copper	50V / 70V / 100V	2 / 4 / 8 Ω	Ø 170 x 65 mm	7.02 kg



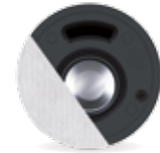
CEILING SPEAKERS

Acoustically crafted high-quality loudspeakers with a circular design for in-ceiling/in-wall mounting.

CELO series

High-end ceiling speakers

The CELO series is AUDAC's high-end slim ceiling speaker series, consisting of four models which guarantee an optimal experience for every situation and application. A white front grill is standard included.



CELO2

The ultra-compact size enables the CELO2 to smoothly integrate into any interior like no other loudspeaker. The 2" full range aluminum cone driver has an RMS power handling of 10W and is fitted in a ported enclosure with closed back can. This way, a clear and crisp sound is guaranteed with an improved response in the low frequencies.

(Also available in 16Ω version: CELO2D)

8 Ohm

16 Ohm

Special front grills

- black version (/B) - RAL9005
- paintable version (/P)

CELO2 : GLC02
CELO5 : GLC05
CELO6 : GLC06
CELO8 : GLC08





CELO5

The uncompromised design of the CELO5 results in the ideal match between quality and size. It produces a stunning sound which is extremely detailed and clear. The two-way construction consisting of a 5" aluminum cone woofer and a complementary 1" dome tweeter are smoothly matched using a high-quality crossover network.

8 Ohm



CELO6

The perfect match for a large number of applications is realised with the CELO6 loudspeaker. This loudspeaker consists of a 6" aluminum cone woofer with a complementary 1" dome tweeter. This combination guarantees the perfect harmony and balance of sound, allowing you to accurately distinguish each element of your favourite songs.

8 Ohm



CELO8

The most powerful of its kind is the CELO8 loudspeaker, which is constructed using a 8" aluminum cone woofer and a complementary 1" dome tweeter. This combination allows the loudspeaker to reach lower frequencies which results in a high-fidelity sound with powerful and detailing low frequencies, unheard of in its class.

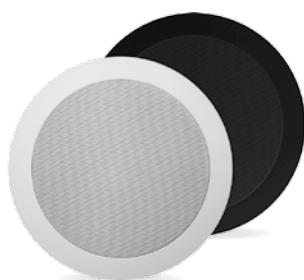
8 Ohm

	Max power	RMS power	Max SPL	Sensitivity 1W / 1 m	Drivers	Freq response +/- 3 dB	Cut-out dimensions	Dimensions
CELO2 & CELO2D	20W	10W	93 dB	83 dB	2"	120 Hz - 20 kHz	Ø 100 mm	Ø 118 x 98 mm
CELO5	100W	50W	102 dB	85 dB	1" HF & 5" LF	70 Hz - 20 kHz	Ø 155 mm	Ø 175 x 98 mm
CELO6	120W	60W	106 dB	88 dB	1" HF & 6" LF	55 Hz - 20 kHz	Ø 210 mm	Ø 230 x 103 mm
CELO8	160W	80W	108 dB	89 dB	1" HF & 8" LF	46 Hz - 40 kHz	Ø 250 mm	Ø 270 x 118 mm

CS series

Ceiling speakers

The CS series loudspeakers are high-quality in-ceiling loudspeakers, delivering exceptional sound quality and value for a wide variation of applications, ranging from paging and announcements to background music systems in a wide range of business applications, including hotels, restaurants and pubs, corporate offices, retail stores, etc. The mounting of all CS series speakers into the ceiling is achieved with a Quickfix mechanism, offering a great installers convenience and lifetime stability.

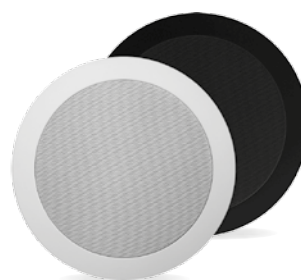


CS55

The CS55 in-ceiling loudspeaker features a 5 ¼ " dual cone driver with a continuous power handling of 10 Watt and a maximum power handling of 20 Watt. The dual cone construction makes the CS55 the perfect match for a wide variation of general purpose indoor applications, ranging from paging and announcement systems to background music systems.

A multi-tapping line transformer fitted with Fast-con™ allows fast and smooth connections to 100 Volt public address systems with different power taps for 6W, 3W and 1.5 Watt and/or low impedance (8Ω) systems.

Available in both white (/W) and black (/B) colour. The 16Ω (CS55D) version allows connection for a large number of speakers in a standard low impedance audio system.



CS74

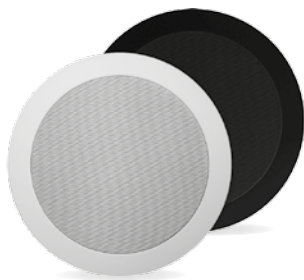
The CS74 in-ceiling loudspeaker features a 5 ¼ " driver with a coaxially mounted 1" tweeter, having a continuous power handling of 30 Watt and a maximum power handling of 60 Watt. The 2-way construction makes the CS74 the perfect match for a wide variation of highly demanding applications, guaranteeing a high-quality and true-to-nature reproduction of music and speech. The DuraWeather™ treatment on the speaker's cone and aluminium front grill protects it for installation in humid or outdoor environments.

A multi-tapping line transformer fitted with Fast-con™ allows fast and smooth connections to 100 Volt public address systems with different power taps for 6W, 3W and 1.5 Watt and/or low impedance (8Ω) systems.

Available in both white (/W) and black (/B) colour.



	Max power	RMS power	Max SPL	Sensitivity 1W / 1 m	Power taps / impedance	Freq response + - 3 dB	Cut-out dimensions	Dimensions
CS55	20W	10W	109 dB	93 dB	6 / 3 / 1.5W / 8 Ω	70 Hz - 14 kHz	Ø 165 mm	Ø 202.5 x 67 mm
CS55D	20W	10W	109 dB	93 dB	6 / 3 / 1.5W / 16 Ω	70 Hz - 14 kHz	Ø 165 mm	Ø 202.5 x 67 mm
CS74	60W	30W	104 dB	90 dB	6 / 3 / 1.5W / 8 Ω	60 Hz - 20 kHz	Ø 167 mm	Ø 202.5 x 72 mm

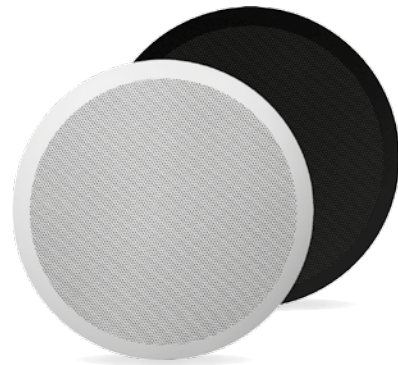


CS75

The CS75 in-ceiling loudspeaker features a 5 ¼" driver with a coaxially mounted 1" tweeter, having a continuous power handling of 30 Watt and a maximum power handling of 60 Watt. The 2-way construction makes the CS75 the perfect match for a wide variation of highly demanding applications, guaranteeing a high-quality and true-to-nature reproduction of music and speech. The DuraWeather™ treatment on the speaker's cone and aluminium front grill protects it for installation in humid or outdoor environments.

A multi-tapping line transformer fitted with Fast-con™ allows fast and smooth connections to 100 Volt public address systems with different power taps for 24W, 12W and 6 Watt and/or low impedance (8Ω) systems.

Available in both white (W) and black (B) colour. The 16Ω (CS75D) version allows connection for a large number of speakers in a standard low impedance audio system.



CS85

The CS85 in-ceiling loudspeaker features a 8" driver with a coaxially mounted 1" tweeter, having a continuous power handling of 40 Watt and a maximum power handling of 80 Watt. The 2-way construction makes the CS85 the perfect match for a wide variation highly demanding of applications, guaranteeing a high-quality reproduction of music and speech with true and deep performance in the low frequency range. This guarantees a true Hi-Fi experience. The DuraWeather™ treatment on the speakers' cone and aluminium front grill protects it for installation in humid or outdoor environments.

A multi-tapping line transformer fitted with Fast-con™ allows fast and smooth connections to 100 Volt public address systems with different power taps for 24W, 12W and 6 Watt and/or low impedance (8Ω) systems.

Available in both white (W) and black (B) colour. The 16Ω (CS85D) version allows connection for a large number of speakers in a standard low impedance audio system.



	Max power	RMS power	Max SPL	Sensitivity 1W / 1 m	Power taps / impedance	Frequency response +/- 3 dB	Cut-out dimensions	Dimensions
CS75	60W	30W	104 dB	90 dB	24 / 12 / 6W / 8 Ω	60 Hz - 20 kHz	Ø 165 mm	Ø 202.5 x 82 mm
CS75D	60W	30W	104 dB	90 dB	24 / 12 / 6W / 16 Ω	60 Hz - 20 kHz	Ø 165 mm	Ø 202.5 x 82 mm
CS85	80W	40W	112 dB	94 dB	24 / 12 / 6W / 8 Ω	60 Hz - 20 kHz	Ø 237 mm	Ø 272 x 93 mm
CS85D	80W	40W	112 dB	94 dB	24 / 12 / 6W / 16 Ω	60 Hz - 20 kHz	Ø 237 mm	Ø 272 x 93 mm

CS4 & CS6 series

Ceiling speakers with back can



CS424

The CS424 in-ceiling loudspeaker features a 4" driver with a coaxially mounted 1" tweeter, having a continuous power handling of 30 Watt and a maximum power handling of 60 Watt. The 2-way construction in combination with the metal back dome makes the CS424 suitable for highly demanding applications, no matter which kind of ceiling or surface the speaker is assembled to.

A multi-tapping line transformer in combination with a rotary selector switch behind the front grill allows implementation to 100 Volt public address systems with different power taps for 24W, 12W and 6 Watt and/or low impedance (8Ω) systems. Connections are made using 4-pin terminal block connections on the rear side of the back dome.



CS660

The CS660 in-ceiling loudspeaker features a 6.5" driver with a coaxially mounted 1" tweeter, having a continuous power handling of 60 Watt and a maximum power handling of 120 Watt. The 2-way construction in combination with the metal back dome makes the CS660 suitable for highly demanding applications guaranteeing a high-quality reproduction of music and speech with true and deep performance in the low frequency range, no matter which kind of ceiling or surface the speaker is assembled to.

A multi-tapping line transformer in combination with a rotary selector switch behind the front grill allows implementation to 100 Volt public address systems with different power taps for 60W, 30W and 15W and/or low impedance (8Ω) systems. Connections are made using 4-pin terminal block connections on the rear side of the back dome.



	Max power	RMS power	Max SPL	Sensitivity 1W / 1 m	Power taps / impedance	Freq response +- 3 dB	Cut-out dimensions	Dimensions
CS424	60W	30W	101 dB	86 dB	24 / 12 / 6W / 8 Ω	130 Hz - 20 kHz	Ø 167 mm	Ø 205 x 182 mm
CS660	120W	60W	105 dB	87 dB	60 / 30 / 15W / 8 Ω	65 Hz - 20 kHz	Ø 225 mm	Ø 250 x 210 mm

CSW & CSA series

Ceiling speakers



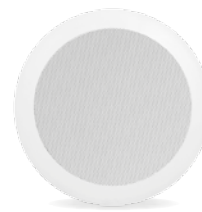
CSW55

The CSW55 in-ceiling loudspeaker features a 5 1/4" full range driver with a continuous power handling of 10 Watt and a maximum power handling of 20 Watt which makes it suitable for a variation of general purpose indoor applications, ranging from paging and announcement systems to background music systems. An integrated LED unit (24 Lumen intensity) is assembled to the center of the speaker which can be separately controlled and used for illumination or visible alarm purposes.

A multi-tapping line transformer fitted with Fastcon™ allows fast and smooth connections to 100 Volt public address systems with different power taps for 6W, 3W and 1.5 Watt and/or low impedance (8Ω) systems.

8 Ohm

100V



CSA506

The CSA506 is an economic in-ceiling loudspeaker featuring a 5" driver with a continuous power

handling of 6 Watt and a maximum power handling of 10 Watt. The speaker is constructed as one entity combining both the speakers basket and mounting frame, resulting in a built-in depth limited to 55 mm. Instant fixation to the ceiling is made possible through the spring-fix mounting, offering a great installers convenience and lifetime stability.

A multi-tapping line transformer allowing it to be connected to 100 Volt public address systems with different power taps for 6W and 3W.

100V

	Max power	RMS power	Sensitivity 1W / 1 m	Power taps	Freqresponse + - 3 dB	Cut-out dimensions	Dimensions
CSW55	20W	10W	90 dB	6 / 3 / 1.5W	70 Hz - 14 kHz	Ø 167 mm	Ø 272 x 93 mm
CSA506	10W	6W	93 dB	6 / 3W	100 Hz - 15 kHz	Ø 150 mm	Ø 175 x 60 mm

AWP & SSP series

Waterproof ceiling speakers

These high-quality in-ceiling loudspeakers are especially designed for use in applications with high levels of humidity such as bathrooms, wellness, swimming pool area's or many more!



AWP06

The AWP06 in-ceiling loudspeakers features a 4" dual cone driver with continuous power handling of 6 Watt and a maximum power handling of 10 Watt. The dual cone construction makes the AWP06 the perfect match for a wide variation of general purpose in & outdoor applications in humid and damp environments, ranging from paging and announcement systems to background music systems. The full plastic enclosure with aluminum front grill and closed back makes the speaker comply to IP65 Ingress protection standards.

Instant fixation to the ceiling is made possible through the spring-fix mounting, offering a great installers convenience and lifetime stability.

A multi-tapping line transformer with fixed connection cable allows it to be connected to 100 Volt public address systems with different power taps for 6W, 3W and 1.5 Watt and/or low impedance (8Ω) systems.



SSP500

The SSP500 in-ceiling loudspeakers features a 5 ¼" driver with a coaxially mounted 1" tweeter, having a continuous power handling of 20 Watt and a maximum power handling of 40 Watt. The 2-way construction makes the SSP500 the perfect match for a wide variation of highly demanding in & outdoor applications in humid and damp environments, guaranteeing a high-quality and true-to-nature reproduction of music and speech. The enclosure constructed with heat resistant plastic materials and aluminum front grill makes the speaker comply to IP44 Ingress protection standards and allows it to be installed in environments with extreme levels of humidity and temperature (up to 100°C) such as sauna's.

Instant fixation to the ceiling is made possible by a 4-screw mounting system, offering a lifetime stability while connections to low impedance (8Ω) systems are made by cable lug terminals.



	Max power	RMS power	Max SPL	Sensitivity 1W / 1 m	Power taps	Freq response +- 3 dB	Cut-out dimensions	Dimensions
AWP06	10W	6W	95 dB	87 dB	6 / 3 / 1.5W	100 Hz - 15 KHz	Ø 125 mm	Ø 140 x 130 mm
SSP500	40W	20W	99 dB	86 dB		75 Hz - 20 KHz	Ø 150 mm	Ø 165 x 74 mm

CSF series

Ceiling speaker with fire dome



CSF506

The CSF506 in-ceiling loudspeaker features a 5" full range driver with a continuous power handling of 6 Watt and a maximum power handling of 10 Watt making it suitable for a variation of general purpose indoor applications. Typical applications range from paging and announcement systems to background music systems. The full metal construction with back dome and flame retardant construction materials, a ceramic connection terminal and ceramic fuse allows the speaker for use in announcement and alarm systems compliant to EN60849 evacuation standards.

A multi-tapping line transformer allowing it to be connected to 100 Volt public address systems

with different power taps for 6W and 3W, while assembly is done by a special ceiling-clamping mounting system.

100V



	Max power	RMS power	Sensitivity 1W / 1 m	Power taps	Freq response + - 3 dB	Cut-out dimensions	Dimensions
CSF506	10W	6W	90 dB	6 / 3W	90 Hz - 18 kHz	Ø 160 mm	Ø 180 x 127 mm

WS & CSS series

Surface mount speaker

These are elegant surface mount loudspeakers, designed for applications where unobtrusive sound is required without having the possibility for flush mount integration into the walls or ceiling. The construction is made out of high-quality materials, ensuring a beautiful reproduction for music and speech. Fitted with multi-tapping line transformers, connections to 100 Volt public address systems with different power are possible.



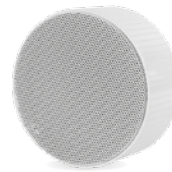
WS500

The WS500 is a surface mount wall loudspeaker with a curved and elegant enclosure featuring a 6.5" dual cone driver with a continuous power handling of 10 Watt and a maximum power handling of 20 Watt. The dual cone construction makes the WS500 the perfect match for a wide variation of general purpose indoor applications, ranging from paging and announcement systems to background music systems.

This makes it suitable for a variation of general purpose indoor applications, ranging from paging and announcement systems to background music systems.

A multi-tapping line transformer allowing it to be connected to 100 Volt public address systems with different power taps for 10W and 5W.

100V



CSS556

The CSS556 is a surface mount wall loudspeaker housed in a rugged aluminum enclosure, offering a vandal proof solution for public applications where speakers are mounted within people's reach. It features a 6" full range driver with a continuous power handling of 10 Watt and a maximum power handling of 15 Watt which makes it suitable for a variation of general purpose indoor applications, ranging from paging and announcement systems to background music systems.

A multi-tapping line transformer allowing it to be connected to 100 Volt public address systems with different power taps for 6W and 3W, while a ceramic connection terminal and thermal fuse makes it compliant to EN60849 evacuation standards.

100V

	Max power	RMS power	Max SPL	Sensitivity 1W / 1 m	Power taps	Freq response +3 dB	Dimensions
WS500	20W	10W	102 dB	92 dB	10 / 5W	150 Hz - 15 kHz	240 x 340 x 100 mm
CSS556	15W	10W	99 dB	91 dB	6 / 3W	110 Hz - 18 kHz	Ø 170 x 79 mm





RECTANGULAR FLUSH-MOUNT SPEAKERS

Acoustically crafted high-quality loudspeakers with a rectangular design for in-wall/in-ceiling mounting.

MERO series

In-wall speakers

The selection of high-grade materials in combination with accurate acoustics craftsmanship makes the MERO speakers superior in their class.

An elegant look with minimal visual impact is created by the slim grill with very thin border, while great ease and installers convenience is guaranteed using the quick-fix mechanism with Gold-CON connectivities. The grill is held in place using neodymium magnets, providing a quick and stable assembly. Installation can be done both vertically and horizontally, while the rotatable tweeter allows optimal orientation positioning. A white front grill is standard included.





MERO2

Thanks to the 2" driver with aluminum cone and the ported design, this ultra-compact sized MERO2 not only sounds impressive but it also integrate smoothly into any interior. MERO2 comes available in both 8Ω (MERO2) and 16Ω version (MERO2D).



MERO5

The medium sized MERO5 consists of a 5" aluminum cone woofer and a complementary 1" dome tweeter that are smoothly matched and optimized using a high-quality crossover network.



MERO6

The largest MERO6 consists of a 6" aluminum cone woofer and a complementary 1" dome tweeter that are smoothly matched and optimized using a high-quality crossover network.



Special front grills

- black version (/B) - RAL9005
- paintable version (/P)

MERO2 : GLM02
 MERO5 : GLM05
 MERO6 : GLM06



WMM20

The WMM20 is an optional accessory for the MERO2 loudspeaker, allowing the speaker to be installed in any concrete or brick wall. The dimensions measure 96 mm x 144 mm, with a built-in depth of 83 mm.

	Max power	RMS power	Max SPL	Sensitivity 1W / 1 m	Drivers	Freq response +- 3 dB	Cut-out dimensions	Dimensions
MERO2 & MERO2D	20W	10W	93 dB	83 dB	2"	120 Hz - 20 kHz	128 x 80 mm	106 x 152 x 70 mm
MERO5	100W	50W	102 dB	85 dB	1" HF & 5" LF	70 Hz - 20 kHz	139 x 214 mm	162 x 237 x 74 mm
MERO6	120W	60W	106 dB	88 dB	1" HF & 6" LF	55 Hz - 20 kHz	174 x 254 mm	197 x 277 x 82 mm

WS series

Flush mount in-wall speakers

The WS series loudspeakers are high-quality in-wall/ceiling loudspeakers, delivering exceptional sound quality and value for a wide variation of applications, ranging from paging and announcements to background music systems in a wide range of business applications, including hotels, restaurants and pubs, corporate offices, retail stores, etc. The mounting of all WS series speakers into the wall or ceiling is achieved with a Quickfix mechanism, offering a great installers convenience and lifetime stability.



WS524

The WS524 is a 2-way square in-wall/ceiling loudspeaker featuring a 5 ¼ " driver with a coaxially mounted 1" tweeter, having a continuous power handling of 30 Watt and a maximum power handling of 60 Watt. The 2-way construction makes the WS524 the perfect match for a wide variation of highly demanding applications, guaranteeing a high-quality and true-to-nature reproduction of music and speech. The DuraWeather™ treatment on the speaker's cone and aluminium front grill protects it for installation in humid or outdoor environments.

A multi-tapping line transformer fitted with Fastcon™ allows fast and smooth connections to 100 Volt public address systems with different power taps for 24W, 12W and 6W and/or low impedance (8Ω) systems.

The 16Ω (WS524D) version allows connection for a large number of speakers in a standard low impedance audio system.



WS624

The WS624 is a 2-way square in-wall/ceiling loudspeaker featuring a 5 ¼ " driver with 1" tweeter, having a continuous power handling of 30 Watt and a maximum power handling of 60 Watt. The 2-way construction makes the WS624 the perfect match for a wide variation of highly demanding applications, guaranteeing a high-quality and true-to-nature reproduction of music and speech. The DuraWeather™ treatment on the speaker's cone and aluminium front grill protects it for installation in humid or outdoor environments.

A multi-tapping line transformer fitted with Fastcon™ allows fast and smooth connections to 100 Volt public address systems with different power taps for 24W, 12W and 6W and/or low impedance (8Ω) systems.

The 16Ω (WS624D) version allows connection for a large number of speakers in a standard low impedance audio system.



	Max power	RMS power	Max SPL	Sensitivity 1W / 1 m	Power taps / impedance	Freq response ± 3 dB	Cut-out dimensions	Dimensions
WS524	60W	30W	107 dB	92 dB	24 / 12 / 6W / 8 Ω	60 Hz - 20 kHz	147 x 147 mm	180 x 180 x 85 mm
WS524D	60W	30W	107 dB	92 dB	24 / 12 / 6W / 16 Ω	60 Hz - 20 kHz	147 x 147 mm	180 x 180 x 85 mm
WS624	60W	30W	107 dB	92 dB	24 / 12 / 6W / 8 Ω	60 Hz - 20 kHz	245 x 158 mm	280 x 192 x 75 mm
WS624D	60W	30W	107 dB	92 dB	24 / 12 / 6W / 8 Ω	60 Hz - 20 kHz	245 x 158 mm	280 x 192 x 75 mm

CS1000 series

Ceiling / In-wall subwoofers



CS1000S

The CS1000S is an in-wall/ceiling subwoofer featuring a 10" low frequency driver with a continuous power handling of 100 Watt and a maximum power handling of 200 Watt. It can be used as an extension for the low frequency range on any flush mount loudspeaker system, guaranteeing a true and deep low frequency response.

It is capable of producing sound pressure levels up to 108 dB, with a stunning frequency response over a range between 28 Hz and 300 Hz. An external crossover network (active or passive) is recommended for optimal performance.

The construction is made by a super slim ABS frame which limits the required built-in depth to a minimum of 95 mm and can be painted to blend-in with any environment. The assembly system offers a quick and simple installation to any wall or ceiling.



	Max power	RMS power	Max SPL	Sensitivity 1W / 1 m	Impedance	Frequency range -10 dB	Dimensions
CS1000S	200W	100W	108 dB	88 dB	8 Ω	28 Hz - 300 Hz	304 x 304 x 104 mm



WALL SPEAKERS

Design and performance orientated loudspeakers for a wide variety of applications.

ATEO series

Wall speakers with CleverMount™

The ATEO is a series of extraordinary loudspeakers especially designed for fixed install indoor applications, ranging from modern residential applications to the most demanding designer applications in environments such as retail stores, pubs, restaurants or even clubs thanks to its high power components and extremely wide spread angle.

ATEO speakers are available in black (/B) or white (/W).



ATEO2

The ATEO 2 is the 2" version, with a 2" full range aluminum cone speaker guaranteeing a clear and crisp sound with minimal visual impact. It features a stunningly designed and elegant looking ABS housing fitted with high-quality components. ATEO 2 speakers are available in black (/B) or white (/W) and 16Ω version ATEO2D).



ATEO4

The ATEO 4 is the 4" version, with a 1" dome tweeter and a 4" Mid / Low frequency driver, ensuring a true to- nature, high-fidelity reproduction of music and speech. It features a stunningly designed and elegant looking ABS housing which is fitted with High-Quality components. ATEO 4 speakers are available in black (/B) or white (/W).



Wall mount accessories

Each of the ATEO speakers comes included with a wall mount accessory, simplifying the installation in applications with wiring not directly situated under the mounting position. This spacer is mounted between the wall and speaker bracket and includes various breakout points as cable inlet.



ATEO6

The ATEO 6 is the 6" version, with a 1" dome tweeter and a 6" Mid / Low frequency driver, ensuring a true tonature, high-fidelity reproduction of music and speech. It features a stunningly designed and elegant looking ABS housing which is fitted with High-Quality components. ATEO 6 speakers are available in (/B) or white (/W).



CMA series

The CMA series mounting sets are designed for mounting ATEO series speaker clusters (two or four) to ceilings. This offers solutions for large open indoor spaces offering a uniform sound dispersion in all required directions. They can fit both ATEO4 or ATEO6 series speakers and come delivered as a complete set including pole and ceiling mount.

CMA142 & CMA144

Cluster mounting set for 2 or 4 x ATEO4 speakers
Available in black (/B) and white (/W)

CMA162 & CMA164

Cluster mounting set for 2 or 4 x ATEO6 speakers
Available in black (/B) and white (/W)

	Max power	RMS power	Max SPL	Sensitivity 1W / 1 m	Power Taps / impedance	Freq response +/- 3 dB	Dimensions
ATEO2	20W	10W	93 dB	83 dB	8 Ω	120 Hz - 20 kHz	80 x 136 x 111.5 mm
ATEO2D	20W	10W	93 dB	83 dB	16 Ω	120 Hz - 20 kHz	80 x 136 x 111.5 mm
ATEO4	70W	35W	101 dB	86 dB	24 / 12 / 6 / 3W / 8 Ω	100 Hz - 20 kHz	137 x 224 x 154 mm
ATEO6	120W	60W	106 dB	89 dB	50 / 25 / 12.5 / 6.25W / 8 Ω	65 Hz - 20 kHz	194 x 350 x 220 mm

WX series

Universal wall speakers

This series comprises of both indoor and outdoor 2-way performance speakers suited for a wide variety of applications, delivering true-to-nature, high fidelity reproductions of music and speech. For optimal orientation, an included mounting bracket allows for horizontal or vertical mounting as well as focusing of the speaker in the desired direction. Thanks to a built-in line transformer, they can be used in both 100V or low impedance applications. In addition to this, a fitted protection network will insure against tweeter overload.



WX302

The WX302 is the smallest speaker of the WX family, fitted with an 1" dome tweeter and a 3" low frequency loudspeaker. It delivers a power of 30W in standard 8Ω systems, but can also be used in 100V PA systems. This speaker is available in three colours: white (/W), black (/B) and silver (/S).

Horizontal Coverage: 100°
Vertical Coverage: 100°



WX502

The WX502 is the medium speaker of the WX family, fitted with an 1" dome tweeter and a 5 1/4" low frequency loudspeaker. It delivers a power of 50W in standard 8Ω systems, but can also be used in 100V PA systems. This speaker is available in three colours: white (/W), black (/B) and silver (/S).

Horizontal Coverage: 110°
Vertical Coverage: 110°



WX802

The WX802 is the largest speaker of the WX family, fitted with an 1" dome tweeter and a 8" low frequency loudspeaker. It delivers a power of 70W in standard 16Ω systems, but can also be used in 100V PA systems. This speaker is available in three colours: white (/W), black (/B) and silver (/S).

Horizontal Coverage: 100°
Vertical Coverage: 100°



	Max power	RMS power	Max SPL	Sensitivity 1W / 1 m	Power taps / impedance	Freq range -10 dB	Dimensions
WX302	60W	30W	100 dB	85 dB	20 / 10 / 5W / 8 Ω	60 Hz - 20 kHz	199 x 129 x 120 mm
WX502	100W	50W	102 dB	87 dB	40 / 20 / 10W / 8 Ω	55 Hz - 20 kHz	212 x 147 x 136 mm
WX802	140W	70W	108 dB	89 dB	60 / 30 / 15W / 16 Ω	50 Hz - 20 kHz	270 x 360 x 215 mm



Outdoor wall speakers

The additional features of the WX outdoor series really make the difference. A drain hole makes sure the moisture can flow out freely when condensation occurs. The special designed waterproof connector lets you set the power for the speakers in three adjustable steps for 100V and one step for low impedance applications.

The enclosure is made of durable weatherproof ABS, while the electroplated coating of the included mounting bracket easily passes the 96 hours salt-spray test. This means that even in rough weather conditions it is possible to mount and focus the loudspeaker both horizontally and vertically.



WX302/O

The WX302/O is a compact 2-way 3" speaker specifically designed for outdoor use and lends itself to a variety of applications, ensuring true-to-nature, high-fidelity reproduction of music and speech. This outdoor speaker is available in black (/OB) and white (/OW).

Horizontal coverage: 100°
Vertical Coverage: 100°



WX502/O

The WX502/O is a powerful 2-way 5" speaker which is especially designed for outdoor use, ensuring true-to-nature, high fidelity reproduction of music and speech. This outdoor speaker is available in black (/OB) and white (/OW).

Horizontal Coverage: 110°
Vertical Coverage: 110°



WX802/O

The WX802/O is a powerful 2-way, 8" speaker which is specifically designed for outdoor use. It lends itself to a wide variety of outdoor applications, ensuring a clear and powerful sound reproduction. This outdoor speaker is available in black (/OB) and white (/OW).

Horizontal coverage: 100°
Vertical Coverage: 100°



	Max power	RMS power	Max SPL	Sensitivity 1W / 1 m	Power taps / impedance	Freq range -10 dB	Dimensions
WX302/O	60W	30W	100 dB	85 dB	20 / 10 / 5W / 8 Ω	60 Hz - 20 kHz	199 x 129 x 120 mm
WX502/O	100W	50W	102 dB	87 dB	40 / 20 / 10W / 8 Ω	55 Hz - 20 kHz	212 x 147 x 136 mm
WX802/O	140W	70W	108 dB	89 dB	60 / 30 / 15W / 16 Ω	50 Hz - 20 kHz	270 x 360 x 215 mm

LX series

Active speaker systems



LX503MK2

This 3-way loudspeaker system consisting of an active and passive unit is ideal for a wide variety of applications requiring a compact, clear, powerful and flexible stereo audio solution.

Unbalanced line level audio sources, such as CD-players, DVD-players, laptops or MP3-players can be directly connected thanks to either the RCA or 3.5 mm jack connector, while balanced sources can be connected to the terminal block connections allowing long signal runs without interference.

A volume potentiometer allows loudness adjustment, while the two-band tone control allows equalization of treble and bass.

LX503MK2 speakers come including mounting brackets and are available in black (/B) or white (/W).

LX523

Its multiple input possibilities and different controllability options make this system ideal for installations requiring a compact, clear, powerful and flexible stereo audio solution. The 3-way active loudspeaker is designed to be used in combination with separately available input units such as the WP523 wall panel and RM523 web based input control unit. Connecting these peripherals to the system can be easily achieved using a standard CAT5 cable with possible bridging distances of up to 300 meters. Available colours are black (LX523/B) and white (LX523/W).

LW523

Set of LX523 pair + WP523



	RMS power	Sensitivity 1W / 1 m	Frequency response + - 3 dB	Dimensions	Weight
LX523	2 x 40W	88 dB	80 Hz - 20 kHz	178 x 240 x 193 mm	5.4 kg
LX503MK2	2 x 40W	88 dB	80 Hz - 20 kHz	178 x 240 x 193 mm	5.4 kg



XENO series

Full range speakers

The XENO series is a loudspeaker range specifically designed for fixed audio installations in modern environments, offering two different sizes of contemporary and elegantly designed products. What makes them so unique is their full range audio design, allowing them to be used without additional bass cabinet.

All XENO series speakers are available in black (/B) or white (/W).



XENO6

The XENO6 is the 6" version, featuring a 1" dome tweeter and a 6" Mid / Low frequency driver, ensuring a high-fidelity sound. This wooden cabinet is fitted with a slim and elegant front grill.

Horizontal coverage: 100°

Vertical Coverage: 100°

8 Ohm

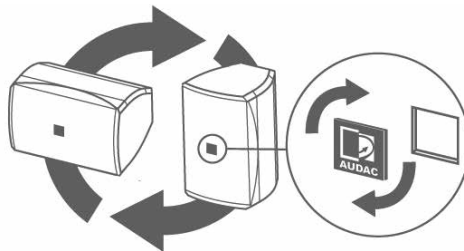
XENO8

The XENO8 is the 8" version, with a 1" dome tweeter and a 8" Mid / Low frequency driver, ensuring a true-to-nature, high-fidelity reproduction of music and speech. This wooden cabinet is fitted with a slim and elegant front grill.

Horizontal coverage: 100°

Vertical Coverage: 100°

8 Ohm



Rotatable logo design
for horizontal and vertical mounting

	Max power	RMS power	Max SPL	Sensitivity 1W / 1 m	Freq response +/- 3 dB	Dimensions	Weight
XENO6	160W	80W	110 dB	88 dB	65 Hz - 18 kHz	210 x 345 x 220 mm	5.6kg
XENO8	240W	120W	110 dB	89 dB	60 Hz - 18 kHz	250 x 380 x 262 mm	7.8 kg
VEXO8	350W	175W	115 dB	92 dB	65 Hz - 20 kHz	250 x 380 x 262 mm	9.7 kg

VEXO series

Compact high-power speaker

The exceptional accuracy and clarity coming from the VEXO8 is recommended to be extended with a complementary bass cabinet adding the punchy & deep bass, resulting in a stunning sound over the entire frequency range.



VEXO8

The VEXO8 is a high-output loudspeaker cabinet, featuring a 8" high efficiency Mid / Low range driver and 1" compression driver fitted with a rotatable horn, providing a powerful and detailed sound in a compact cabinet.

Horizontal coverage: 100°
Vertical Coverage: 80°



Mounting Bracket
(Included)



WBP100
(Optional)



PX series

Indoor speakers

The PX series are compact full range loudspeaker cabinets for a wide variety of indoor applications. They come in three different models, each of them with different size and performance meeting the requirements for every specific application.

A passive crossover network and tweeter overload protection circuit are integrated. Ergo grips, rigging points and speaker pole adapter are provided to facilitate handling and mounting.



PX110MK2

The PX110MK2 is the 10" model of the PX family, consisting of a 10" high output woofer and a compression driver with 1" voice coil. The compression driver is fitted with a rotatable horn allowing both horizontal and vertical use.

Horizontal coverage: 90°
Vertical Coverage: 60°



PX112MK2

The PX112MK2 is the 12" model of the PX family, consisting of a 12" high output woofer and a compression driver with 1.3" voice coil. The compression driver is fitted with a rotatable horn allowing both horizontal and vertical use.

Horizontal coverage: 90°
Vertical Coverage: 75°



PX115MK2

The PX115MK2 is the 15" version of the PX family with a 1.3" HF driver and a 15" medium frequency range loudspeaker. A passive crossover network and tweeter overload protection circuit are integrated.

Horizontal coverage: 90°
Vertical Coverage: 75°



	Max power	RMS power	Max SPL	Sensitivity 1W / 1 m	Frequency range -10 dB	Dimensions	Weight
PX110MK2	350W	180W	120 dB	98 dB	65 Hz - 20 kHz	315 x 545 x 320 mm	16 kg
PX112MK2	600W	300W	125 dB	100 dB	55 Hz - 20 kHz	385 x 645 x 420 mm	26 kg
PX115MK2	600W	300W	125 dB	100 dB	45 Hz - 20 kHz	435 x 765 x 485 mm	35 kg

RX series

Road speakers

The RX series are full range speaker cabinets that are constructed out of solid plywood with a durable scratch free EPDM coating. While this makes them excellent for in- and outdoor road applications, their multi-angled shape means they can be used arrayed, on a speaker stand, standing upright or even as floor monitors. To ensure you will always enjoy the most clear, detailed and natural sound, a built-in protection network provides a bulletproof protection against the risk of tweeter overload.



RX112MK2

The RX112MK2 version, with an RMS power of 300W, is equipped with a 12" high power low/mid frequency loudspeaker together with a 1.3" high frequency compression driver with overload protection circuit and passive crossover network. For easy handling, an ergo grip on top of the speaker is provided, while a built-in 35 mm speaker pole adapter and 12 rigging points make it easy to mount the cabinet in any desired direction.

Horizontal coverage: 90°
Vertical Coverage: 75°



RX115MK2

The RX115MK2 is the 15" version of the RX family with a power of 300W RMS. Along the 15" high power low frequency loudspeaker, it also contains a 1.3" HF compression driver, a passive crossover network and a tweeter overload protection circuit. There's an ergo grip on top of the speaker for easy handling, and the mounting can be done with the built-in 35 mm speaker pole adapter and 12 rigging points.

Horizontal coverage: 90°
Vertical Coverage: 75°



	Max power	RMS power	Max SPL	Sensitivity 1W / 1 m	Frequency range -10 dB	Dimensions	Weight
RX112MK2	600W	300W	124 dB	99 dB	60 Hz - 20 kHz	395 x 620 x 345 mm	23 kg
RX115MK2	600W	300W	126 dB	101 dB	50 Hz - 20 kHz	450 x 720 x 390 mm	29 kg

CPB & MBK series

PX & RX accessoires



The CPB series speaker bags are made of heavy duty splash/waterproof polyester and are intended for the protection and handling of the AUDAC PX and RX series speakers. They are designed so that the connections are accessible, that the speakers can be mounted on a stand and that the speaker handles can be used. All openings can be covered with a stitched flap. In order to avoid structural damages, they are lined inside with a soft protection and equipped with small rubber feet.

Every speaker of the RX and PX series has a specific designed cover bag:

CPB110P	Cover bag for PX110
CPB112P	Cover bag for PX112
CPB115P	Cover bag for PX115
CPB112R	Cover bag for RX112
CPB115R	Cover bag for RX115



MBK series

The MBK1XX series mounting brackets are especially designed for the mounting of the PX series speakers in a simple and secure way on any wall or ceiling. They are constructed of solid steel and come with all the necessary parts for safe mounting, such as a screw flange adapter to replace the speaker's pole flange adapter in the bottom of the speaker, 2 x M10 bolts and a safety cable with M10 eye bolt mounting.



Every speaker of the PX range has a special designed bracket, available in black & white.

MBK110	Mounting bracket for PX110
MBK112	Mounting bracket for PX112
MBK115	Mounting bracket for PX115



FX series

High-output speaker systems

The FX series is a unique and versatile speaker system series. When you combine the FX1.18 bass cabinet with the FX3.15 3-way active speaker cabinet, this truly modular system can be scaled and adapted for every application where a powerful system with a high clarity and sound quality is required. The compact enclosures are provided with weatherproof and scratch resistant DuraCoat textured paintwork and are fitted with eight carry handles allowing easy carriage and handling of the system. The integrated metal rigging frame allows easy and secure rigging, allowing multiple cabinets to be rigged together.



FX3.15

The FX3.15 is a 3-Way high-output, active driven compact High / Mid / Mid-Bass speaker cabinet which is a part of the unique and versatile FX series system.

This three-way cabinet includes a 15" horn-loaded Mid-Bass driver, 6" loaded mid speaker and 1.75" PEEK (Polyether ether ketone) compression driver. The entire system has a power handling of 750 Watt RMS with a maximum power of 1500 Watt. The Mid-Bass section takes part for 500 Watt RMS while the Mid section takes part for 200 Watt RMS and the High section represents 50 Watt RMS. The horn with a coverage pattern of 90° x 40° incorporates both High and Mid frequency drivers which can be rotated allowing complete flexibility in selection of horizontal & vertical as well as left & right positioning.

This system shall be active processed and powered by separate amplifiers for each section. The connections for each sections are performed using two 8-pin speakon compatible connectors, allowing linkthrough when multiple identical speakers are used in the same system.



FX1.18

The FX1.18 is a high-output, horn-loaded single 18" bass cabinet which is designed as a part of the unique and versatile FX series system.

This horn loaded subwoofer cabinet includes an 18" woofer, achieving an RMS power handling of 800 Watt with a maximum power of 1600 Watt. The sensitivity of 102 dB and maximum sound pressure level of 131 dB in combination with the flat frequency response from 37 Hz to 130 Hz ensures a tight, up-front, low frequency reinforcement with attack and definition.

The connections are performed using two 4-pin speaker connectors, allowing linkthrough when multiple identical speakers are used in the same system.



	Max power	RMS power	Impedance	Sensitivity 1W / 1 m	Frequency range -10 dB	Dimensions	Weight
FX1.18	1600W	800W	8 Ω	102 dB	33 Hz - 130 Hz	714 x 600 x 800 mm	63.3 kg
FX3.15	1500W	750W	8 Ω	105 dB	85 Hz - 20 kHz	714 x 456 x 580 mm	47.5 kg

MBK302S

The MBK302S is a flying system for the FX series loudspeaker cabinets, providing safe and secure mounting for one FX1.18 and FX3.15 to any type of ceiling or other supporting structure.

The set contains all sideboards, the connection plate and all required accessories such as bolts and safety wires for mounting and securing the loudspeakers onto the base of the frame. Using the connection plate, the incline angle between the upper and lower cabinet can be set in a range of 30° to 50° in steps of 5°.

The construction of all parts is made out of corrosion resistant zinc-plated steel with a thickness of 4 mm. Additionally, a black powder coating provides further resistance to the elements.





BASS CABINETS

The perfect balance between power and size, these passive bass cabinets offer the best performance for any application.

BASO series

Bass reflex cabinets

The BASO cabinets are universally usable passive bass cabinets. Their bass reflex design is engineered to be as compact as possible while giving the maximum performance in terms of sound quality and pressure. Their enclosures are crafted out of sturdy high-quality plywood while their elegant design enables them to be placed in any environment.



BASO10

The BASO10 is loaded with a 10" high-performance woofer with an RMS power rating of 225W and maximum power of 450W. The strength of this loudspeaker originates from a four layer wound 1.5" voice coil in combination with an over-sized ferrite type magnet which provides an unusual high force factor. In combination with the low-loss suspension, this results in a linear behavior with high efficiency and extremely wide frequency range.

8 Ohm



BASO12

The BASO12 is loaded with a 12" high-performance woofer with an RMS power rating of 500W and maximum power of 1000W. The strength of this loudspeaker originates from a 4" voice coil which is allowed to perform extra long excursions. Displacements are precisely controlled by the dual low-loss suspension resulting in a superior linear behavior.

8 Ohm



BASO15

The BASO15 is loaded with a 15" high-performance woofer with an RMS power rating of 700W and maximum power of 1400W. The strength of this loudspeaker originates from a 4" voice coil which is allowed to perform extra long excursions. Displacements are precisely controlled by the dual low-loss suspension resulting in a superior linear behavior. The integrated carry handles and possibility to add an optional 35 mm pole adapter improve its mobility.

8 Ohm



	Max power	RMS power	Max SPL	Sensitivity 1W / 1 m	Freq range - 10 dB	Dimensions	Weight
BASO10	450W	225W	120 dB	96 dB	38 Hz - 2 kHz	320 x 380 x 380 mm	12 kg
BASO12	1000W	500W	125 dB	98 dB	35 Hz - 600 Hz	380 x 449 x 460 mm	22 kg
BASO15	1400W	700W	127 dB	99 dB	34 Hz - 1 kHz	450 x 534 x 525 mm	31 kg



COLUMN SPEAKERS

Elegantly designed column loudspeakers for high-quality dispersion of speech and music in large reverberant environments.

COLUMN speakers

The problem

A common challenge the AUDAC audio system designers often had to cope with, was to allow the amplification of intelligible speech and music in large reverberant spaces.

Besides intelligible speech and true-to-nature music reproduction, there are often several other requirements for such a system :

- Slim and unobtrusive design
- Being safe and reliable
- Cover long distances
- Easy to install, configure and maintain
- Free from distortion
- High sound directivity

AUDAC has been developing column speakers for specific purposes for over a decade, and with their experience and knowledge they developed a range of column speakers that is suitable to form a solution for every situation.

While many other major manufacturers are involved in the development of DSP-driven applications for such situations, AUDAC succeeded to develop solutions with passive column speakers that give excellent results and have proven their dignity in many applications.

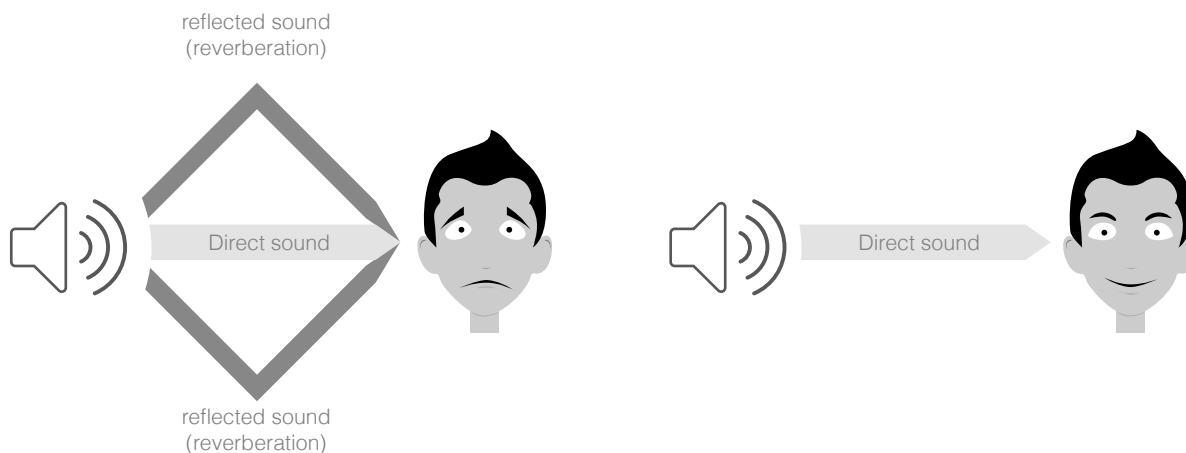
The solution

When a sound system has to be designed for a highly reverberant space (such as airport terminals, railway stations, cathedrals, auditoriums, ...) we must take the direct to reverberant sound ratio into account.

We should try to maximize the sound that is projected directly from the loudspeaker to the listener's ear, while the sound that reaches the listener's ear through reflection on walls, ceilings and other acoustically reflective surfaces has to be reduced as much as possible.

The solution for this problem is focusing the sound directly to the listener's ears and away from acoustically reflective surfaces.

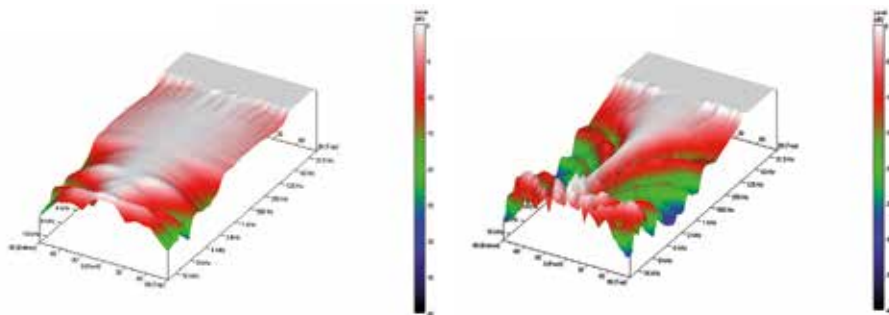
The focusing of the sound can be done with column speakers. These give the listener the effect of listening to only one single line source, with the same dimensions as the total unit and the performance of the individual components combined with each other.



How they work

A column speaker is a speaker with several drivers stacked above each other and feeds all speakers with the same source signal. Therefore, they produce the same sound at the same time. The advantage of this technology compared to other speakers is a remarkably tightly defined vertical dispersion. This technique is called *Phased Array*.

It's a known fact that the directivity of a loudspeaker varies with the frequency: at low frequencies the loudspeakers radiate in an omnidirectional manner. When the frequency increases, the radiation becomes more and more directional, eventually producing a narrow beam of sound directly on axis.



Directivity of a single loudspeaker (CS2.1)

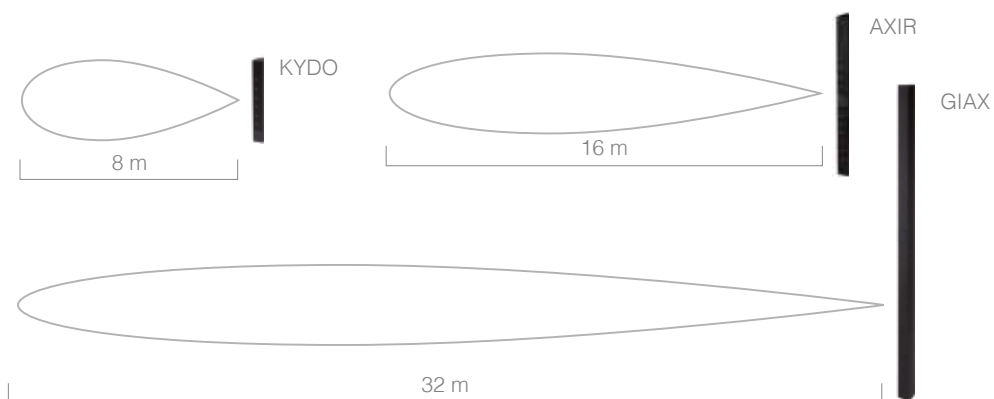
Directivity of a column loudspeaker (AXIR)

When a second identical signal source is placed alongside the first, producing an identical signal with identical timing (phase), the two identical waveforms will interact with each other where their paths meet. They will 'interfere' with each other. On the central axis between the two sources, the distance from each source is identical, so each waveform will arrive at exactly the same time and in exactly the same phase. There will be a constructive interference between the loudspeakers, doubling the amplitude along that axis compared to what it would have been for a single source.

At the off-axis points, the relative distances between the two drivers is changed, and their waveforms will meet at slightly different times with slight phase shifts. This results in a partial (or even complete) cancellation of the sound. This is called destructive interference. When more identical signal sources are added at exactly the same distance, the interference patterns will be stronger clustered, with a more focused beam and a larger amplitude on the central axis.

This effect is reflected in the image below where the carriage length of column speakers is shown. When the length (and the number of drivers) of a column speaker doubles, the sound beam will be more focused and the carriage length will be doubled.

It is recommended to keep the listening area within the speakers carriage range, to maintain the best speech intelligibility and sound quality.



DESIGN COLUMN series

Design column speakers

This range of column speakers is the elegant result of research in the field of phased array acoustics. They are capable of delivering extraordinary sound with a surprisingly high power, lending itself to a wide variety of applications in acoustic difficult environments such as churches, auditoria, presentation and meeting rooms where audibility and intelligibility of music and speech has high importance.

They are housed in slim and elegant constructed enclosures made out of aluminum materials, finished with fine perforated grilles and come with included multi-functional wall brackets allowing swiveling and down-tilting for perfect directional placement.



KYDO

The KYDO design column speaker consists of 6 x 2" high-quality broadband loudspeakers, delivering an extraordinary sound clarity. The overall continuous power handling reaches 60 Watt and the beam width of 170° x 45° makes it the perfect match for acoustically difficult venues, reducing echo and microphone feedback which optimizes the speech intelligibility in reverberant venues.

A multi-tapping line transformer allows it to be connected to 100 Volt public address systems with different power taps for 20W, 10W, 5W and 2.5 W and/or low impedance (12Ω) systems.

12 Ohm

100V





AXIR

The AXIR design column speaker consists of 12 x 2" high-quality broadband loudspeakers, delivering an extraordinary sound clarity. The speakers are divided over two individually controllable sections with a continuous power handling up to 120 Watt. The beam width of 170° x 20° makes it the perfect match for acoustically difficult venues, reducing echo and microphone feedback which optimizes the speech intelligibility in reverberant venues.

A multi-tapping line transformer with individual selection for each section allows it to be connected to 100 Volt public address systems and/or low impedance (6Ω) systems.



AXIR/O

A few additional features makes this model suited for permanent outdoor installation. Each driver is provided with a special coating to protect them from the elements while an acoustically transparent and water-repellent cloth in front



	Max power	RMS power	Max SPL	Sensitivity 1W / 1 m	Power taps	Freq range -10 dB	Dimensions
KYDO	120W	60W	106 dB	90 dB	20 / 10 / 5 / 2.5W / 12 Ω	80 Hz - 19 kHz	70 x 546 x 101 mm
AXIR	240W	120W	113 dB	92 dB	2 x (20 / 10 / 5 / 2.5W) / 6 Ω	80 Hz - 19 kHz	70 x 1006 x 101 mm
AXIR/O	240W	120W	113 db	92 dB	40 / 20 / 10W / 6 Ω	80 Hz - 19 kHz	70 x 1006 x 101 mm
GIAX	480W	240W	114 dB	92 dB	4 Ω	80 Hz - 19 kHz	70 x 2006 x 101 mm



GIAX

The GIAX design column speaker consists of 24 x 2" high-quality broadband loudspeakers, delivering an extraordinary sound clarity. The continuous power handling reaches 240 Watt and the beam width of 170° x 10° makes it the perfect match for acoustically difficult venues, reducing echo and microphone feedback which optimizes the speech intelligibility in reverberant venues.

The overall impedance of the speaker measures 4Ω, allowing it to be implemented in any low impedance audio system.



of each driver prevents water from reaching it. Connecting is done using a waterproof and rotatable AWX-5 connector making the speaker comply to IP55 Ingress protection standards.

CLS series

Column speakers



CLS420

The CLS420 column speaker consists of 4 x 3" broadband loudspeaker section making it suitable for a wide variation of general purpose indoor applications in acoustic difficult environments ranging from speech and announcement systems to background music systems.

The continuous power handling reaches 20 Watt while the multi-tapping line transformer allows it to be connected to 100 Volt public address systems with different power taps for 20W and 10W.

The enclosure is solid constructed using solid aluminum materials and finished with a finely perforated front grill. An included multi-functional wall brackets allowing swiveling and down-tilting for perfect directional placement.



CLS440

The CLS440 column speaker consists of 8 x 3" broadband loudspeaker section making it suitable for a wide variation of general purpose indoor applications in acoustic difficult environments ranging from speech and announcement systems to background music systems.

The continuous power handling reaches 40 Watt while the multi-tapping line transformer allows it to be connected to 100 Volt public address systems with different power taps for 40W and 20W.

The enclosure is solid constructed using solid aluminum materials and finished with a finely perforated front grill. An included multi-functional wall brackets allowing swiveling and down-tilting for perfect directional placement.



	Max power	RMS power	Sensitivity 1W / 1 m	Power taps	Frequency response +- 3 dB	Dimensions
CLS420	40W	20W	91 dB	20 / 10W	170 Hz - 15 kHz	478 x 104 x 86 mm
CLS440	80W	40W	92 dB	40 / 20W	170 Hz - 15 kHz	834 x 104 x 86 mm





SOUND PROJECTORS

Practical surface-mount and suspended sound projector loudspeakers designed for a wide variety of applications.

SP series

Sound projectors

This range of sound projectors is designed for a variation of both in & outdoor applications, ranging from paging and announcements to background music systems. The projector construction makes them perfectly suited for use in large open spaces such as factory halls, warehouses, parking lots or many more. The enclosures are constructed of high quality materials, while compliance to Ingress Protection requirements allows them being used in permanent outdoor installations.



SP20

The SP20 sound projector features a 5 ¼" full range driver with a continuous power handling of 20 Watt, making it suitable for a wide variation of general purpose in & outdoor applications, ranging from paging and announcement systems to background music systems.

The sealed enclosure constructed of weatherproof ABS materials and aluminum front grill makes the speaker comply to IP56 Ingress protection standards. An included aluminum mounting bracket allows down-tilting for perfect directional placement.



SP22

The SP22 sound projector features a 5 ¼" full range driver with a continuous power handling of 20 Watt, making it suitable for a wide variation of general purpose in & outdoor applications, ranging from paging and announcement systems to background music systems.

The sealed enclosure constructed of rugged aluminum materials with strong aluminum front grill guarantees an impact resistant and vandal proof solution while making the speaker comply to IP56 Ingress protection standards. An included aluminum mounting bracket allows down-tilting for perfect directional placement.



SP202

The SP202 is a bi-directional sound projector featuring two 5 ¼" full range drivers with a continuous power handling of 20 Watt (2 x 10 Watt), making it suitable for a wide variation of general purpose in & outdoor applications, ranging from paging and announcement systems to background music systems.

The sealed enclosure constructed of rugged aluminum materials with strong aluminum front grill guarantees an impact resistant and vandal proof solution while making the speaker comply to IP56 Ingress protection standards. An included aluminum mounting bracket allows down-tilting for perfect directional placement.



	Max power	RMS power	Max SPL	Sensitivity 1W / 1 m	Power taps	Freq response +- 3 dB	Dimensions
SP20	40W	20W	104 dB	92 dB	20 / 10 / 5 / 2.5W	110 Hz - 18 kHz	Ø 138 x 205 mm
SP22	40W	20W	105 dB	93 dB	20 / 10 / 5 / 2.5W	110 Hz - 18 kHz	Ø 138 x 205 mm
SP202	2 x 20W	2 x 10W	101 dB	91 dB	20 / 10 / 5 / 2.5W	110 Hz - 18 kHz	Ø 138 x 205 mm



ASP20

The ASP20 is a spherical hanging loudspeaker featuring an 8" full range driver with a continuous power handling of 20 Watt, making it suitable for a wide variation of general purpose indoor applications, ranging from paging and announcement systems to background music systems. The spherical construction creates a 360° distribution field making it perfectly suited for use in large open spaces such as factory halls, warehouses, parking lots or many more.

A multi-tapping line transformer with fixed connection cable allows it to be connected to 100 Volt public address systems with different power taps for 20W, 10 W, 5W and 2.5W.

Suspension is done by a steel integrated wire of the multi-core connection cable. Delivery includes all accessories for fixing and securing the speaker to the ceiling.

100V

	Max power	RMS power	Max SPL	Sensitivity 1W / 1 m	Power taps	Freq response +/- 3 dB	Dimensions
ASP20	40W	20W	103 dB	92 dB	20 / 10 / 5 / 2.5W	80 Hz - 18 kHz	Ø 254 mm



HORN SPEAKERS

Powerful horn loudspeakers designed for projecting speech and music over long distances while maintaining maximum intelligibility.

HS series

Horn speakers

This range of 2-way horn loaded loudspeakers is engineered to provide a long-throw, full range sound projection in a wide variation of in- and outdoor applications. The selection of carefully matched high quality components guarantee an extraordinary clarity of speech and extended frequency response for music. The enclosures are constructed of multi-layer glass composite materials, while compliance to Ingress Protection requirements allows them being used in permanent outdoor installations.



HS208MK2 & HS208TMK2

The HS208TMK2 features a 8" high output woofer and compression driver with 1.3" voice coil. The compression driver is equipped with an overload protection and is fitted with a 40° x 40° coverage horn which is coaxially constructed as one entity with the loudspeaker's enclosure.

A wide range, smooth frequency response with a high efficiency ensures an extraordinary clarity of speech and extended frequency response for music with an continuous power of 150 Watt, up to a maximum power of 300 Watt.

HS208MK2: 8Ω version / IP54 / SpeakON
 HS208TMK2: 100V version / IP65 / Waterproof



HS212MK2 & HS212TMK2

The HS212TMK2 features a 12" high output woofer and a neodymium compression driver with 1.8" voice coil. The compression driver is equipped with an overload protection and is fitted with a 40° x 40° coverage horn which is coaxially constructed as one entity with the loudspeaker's enclosure.

A wide range, smooth frequency response with a high efficiency ensures an extraordinary clarity of speech and extended frequency response for music with an continuous power of 350 Watt, up to a maximum power of 700 Watt.

HS212MK2: 8Ω version / IP54 / SpeakON
 HS212TMK2: 100V version / IP65 / Waterproof



MBK208Z - MBK212Z



The MBK2xx series mounting brackets are designed for mounting HS208(T)MK2 and HS212(T)MK2 horn speakers. Zinc plated finishing allows them to be used for permanent outdoor installation, while up and down-tilting is possible for perfect directional placement. Delivery includes all accessories for fixing and securing the speaker.

	Max power	RMS power	Max SPL	Sensitivity 1W / 1 m	Power taps / impedance	Freq range - 10 dB	Dimensions	Weight
HS208MK2	300W	150W	123 dB	97 dB	8 Ω	70 Hz - 20 kHz	360 x 360 x 482 mm	11.6 kg
HS208TMK2	300W	150W	123 dB	97 dB	120 / 60 / 30W / 8 Ω	70 Hz - 20 kHz	360 x 360 x 482 mm	15.6 kg
HS212MK2	700W	350W	125 dB	95 dB	8 Ω	65 Hz - 20 kHz	508 x 508 x 732 mm	30.8 kg
HS212TMK2	700W	350W	125 dB	95 dB	240 / 120 / 60W / 8 Ω	65 Hz - 20 kHz	505 x 505 x 735 mm	34.4 kg



HS121

The HS121 horn speaker features a 4" full range driver with a continuous power handling of 20 Watt, making it suitable for a wide variation of general purpose in & outdoor applications, ranging from paging and announcement systems to background music systems. The horn construction makes it perfectly suited for medium to long-throw use in large open spaces such as factory halls, warehouses, parking lots or many more. The enclosures are constructed of high quality materials, while compliance to Ingress Protection requirements allows them being used in permanent outdoor installations.

The sealed enclosure constructed of weatherproof and flame retardant materials with aluminum front grill makes the speaker comply to IP65 Ingress protection standards. An included aluminum mounting bracket allows down-tilting for perfect directional placement.



	Max power	RMS power	Max SPL	Sensitivity 1W / 1 m	Power taps / impedance	Freq range - 10 dB	Dimensions	Weight
HS121	40W	20W	109 dB	96 dB	20 / 10 / 5W / 8 Ω	150 Hz - 15 kHz	220 x 160 x 250 mm	2.0 kg

CHA series

Compression horn loudspeakers

This range of compression horn loudspeakers is designed for a variation of both in & outdoor applications, ranging from paging and announcements to background music systems. Compression horn construction makes them perfectly suited for long-throw use in large open spaces such as factory halls, warehouses, parking lots or many more. The enclosures are constructed of high quality materials, while compliance to Ingress Protection requirements allows them being used in permanent outdoor installations.



CHA215

The CHA215 compression horn speaker with a continuous power handling of 15 Watt, making it suitable for a wide variation of general purpose in & outdoor applications, ranging from paging and announcement systems to background music systems.

A multi-tapping line transformer with fixed connection cable allows it to be connected to 100 Volt public address systems with different power taps for 15W, 7.5W, 3.75W and 1.9W.

The sealed enclosure constructed of weatherproof ABS materials and aluminum front grill makes the speaker comply to IP56 Ingress protection standards. An included stainless mounting bracket allows up & down-tilting for perfect directional placement.



CHA230

The CHA230 compression horn speaker with a continuous power handling of 30 Watt, making it suitable for a wide variation of general purpose in & outdoor applications, ranging from paging and announcement systems to background music systems.

A multi-tapping line transformer with fixed connection cable allows it to be connected to 100 Volt public address systems with different power taps for 30W, 20W, 10W and 5W.

The sealed enclosure constructed of weatherproof ABS materials and aluminum front grill makes the speaker comply to IP56 Ingress protection standards. An included stainless mounting bracket allows up & down-tilting for perfect directional placement.



	Max power	RMS power	Sensitivity 1W / 1 m	Power taps	Freq response +- 3 dB	Dimensions
CHA215	25W	15W	107 dB	15 / 7.5 / 3.75 / 1.9W	400 Hz - 9 kHz	Ø 208 x 271.5 mm
CHA230	45W	30W	109 dB	30 / 20 / 10 / 5W	400 Hz - 7.5 kHz	Ø 238 x 302 mm





MICROPHONES

From the most robust hand-held or headset microphones to advanced paging systems, AUDAC provides you with the extension for your voice.

CMX215 & CMX230 series

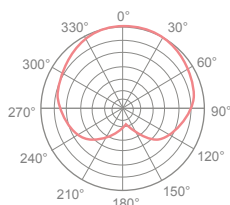
Pipe-neck condenser & shotgun microphones



CMX215

The CMX215 is a pipe-neck condenser microphone fitted on a slim gooseneck with XLR base. It is particularly designed for speech reinforcement systems in a wide variation of applications, such as conference rooms, houses of worship, auditoria, ... or any other kind of speech announcement systems.

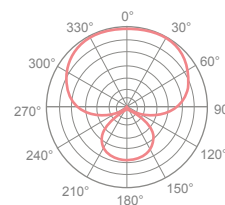
The back-electret condenser capsule with unidirectional (cardioid) characteristic reduces pickup of sound from the sides and rear, improving the speech intelligibility and eliminating unwanted noise and feedback. The high Max. input SPL guarantees a high quality sound reproduction, even when exposed to vigorous sound.



CMX230

The CMX230 is a professional shotgun microphone existing of a back-electret condenser capsule which is fitted on a flexing gooseneck with an XLR base. The compact size, high directivity and pointability makes them suitable for a range of applications such as conference, public address, announcements, ...

The wide frequency response and low noise level guarantee an excellent sound quality, while the directive characteristics discriminates unwanted noise.



	Type	Polar pattern	Impedance	Dynamic range	Sensitivity	Dimensions	Weight
CMX215/45	Back electret Condenser	Cardioid	200 Ω	-	45 dB +- 3 dB	Ø 19 x 538 mm	60 g
CMX215/55	Back electret Condenser	Cardioid	200 Ω	-	45 dB +- 3 dB	Ø 19 x 638 mm	65 g
CMX230	Back electret condenser	Supercardioid	250 Ω	113 dB	42 dB +- 3 dB	Ø 19 x 280 mm	250 g

APM

Microphone base



The APM is a microphone base, designed to be used with the CMX series gooseneck microphones (or any other gooseneck microphone with XLR connector) on any amplifier with microphone inputs.

There's a female XLR connector on top to mount

the gooseneck microphone and a male XLR connector at the back to connect the microphone cable.

The APM microphone base is very stable and features the same design as the APM paging microphones to blend fully with the other equipment.

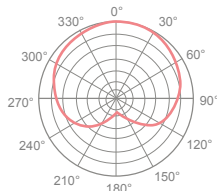
CMX382

Hanging condenser microphone

The CMX382 is a hanging condenser microphone with a slim and miniature design. It is designed for offering versatile solutions for sound reinforcement or recording systems in a wide variation of applications. Typical applications range from speech in meeting or conference rooms to music in houses of worship, orchestra's, choirs and many others.

The tailored frequency response guarantees a rich, clear and

sensitive sound reproduction while the cardioid directivity characteristic eliminates feedback and unwanted noise. The included spiral hanging bracket makes overhead suspension possible above conference tables, choirs, orchestra's, ... while the flexing gooseneck structure allows a highly accurate positioning.



	Type	Polar pattern	Impedance	Max SPL	Sensitivity	Dimensions	Weight
CMX382	Back electret condenser	Cardioid	200 Ω	130 dB	42 dB +- 3 dB	Ø 13.5 x 160 mm	100 g

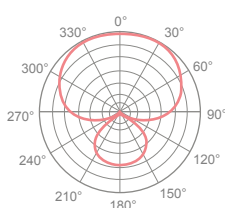
M series

Vocal microphones



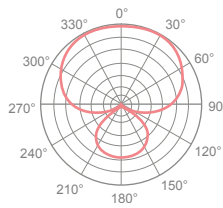
M66/67

The M66 and M67 are fully featured, dynamic, general purpose microphones. Both elegantly designed and solidly constructed, with a robust grill to protect the diaphragm, their highly sensitive neodymium element makes them the perfect microphones for presentations and singers, while their unidirectional (supercardioid) polar pattern ensures feedback is reduced to a strict minimum. Suited for indoor as well as outdoor use, the M66 comes switchless while an 'on/off' switch is provided on the M67.



M86/87

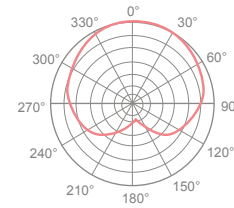
The M86 and M87 are professional super cardioid dynamic microphones perfectly suited for on stage use by singers and musicians. Solidly constructed, with a robust grill to protect the diaphragm, their highly sensitive neodymium element makes them ideal microphones for speech and music, while their unidirectional (supercardioid) polar pattern ensures feedback is reduced to a strict minimum. Suited for indoor as well as outdoor use, the M86 comes switchless while an 'on/off' switch is provided on the M87.



M97

The M97 is a high-quality handheld condenser microphone featuring a back-electret capsule with a wide and smooth frequency response, providing an unsurpassed clarity with a high level of detail which makes it suitable for demanding vocal applications.

The cardioid polar pattern guarantees optimal pickup characteristics for the essential sound sources while eliminating feedback and background noise. The rugged construction with strong steel mesh guarantees high reliability for both fixed and mobile performances.



	Type	Polar pattern	Impedance	Sensitivity	Dimensions	Weight
M66/67	Dynamic	Super cardioid	300 Ω	-75 dB +- 3 dB	Ø 49 x 182 mm	300 g
M86/87	Dynamic	Super cardioid	300 Ω	-74 dB +- 3 dB	Ø 51 x 178 mm	350 g
M97	Back electret condenser	Cardioid	250 Ω	46 dB +- 3dB	Ø 49 x 185 mm	257 g

PDM & HM series

Paging & hand-held microphones

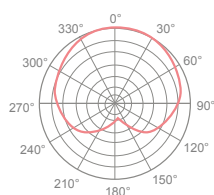


PDM200

The PDM200 paging microphone is a polyvalent dynamic gooseneck microphone, mounted on a solid very stable base and fitted with a three function switch: permanently on, momentary on, and off.

It also contains an RC network for the operation of chime modules and is equipped with a 1.5 meters long connection cable.

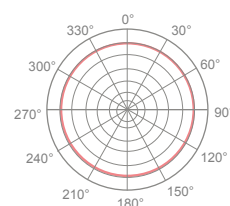
The PDM200 is fully compatible with AUDAC COM series amplifiers but can also be adjusted for other applications.



HM150

The HM150 is a sturdy CB type handheld microphone, with an easy to use Push To Talk switch at its side. This omnidirectional dynamic microphone is designed for close talking applications and is ideal for paging messages. The built-in 2-pole non latching switch activates the microphone when pressed.

A metal wall mounting clip is provided with the microphone. The HM150 is fitted with a 5-pin XLR connector. 2 of these pins are used for chime activation.



	Type	Polar pattern	Impedance	Frequency response	Sensitivity	Dimensions	Weight
PDM200	Dynamic	Cardioid	600 Ω	80 Hz - 12 kHz	-72 dB +- 3dB	162 x 122 x 368 mm	810 g
HM150	Dynamic	Omnidirectional	600 Ω	100 Hz - 10 kHz	-78 dB +- 3dB	60 x 100 x 50 mm	165 g

Microphone accessories

CMT500 / CMT510

Acoustic reference microphone



The CMT500 is an acoustic reference microphone with an omnidirectional pickup pattern based on a small & accurate back electret condenser capsule. It is especially designed to be used for all kinds of measurement applications, such as noise monitoring purposes, room acoustic measurements or speaker measurements.

In combination with the CMT510 outdoor kit, the CMT500 can also be used for permanent outdoor installation in all weather conditions. This combination makes the CMT500 the perfect solution for permanent outdoor noise monitoring systems.



APT20

Phantom power supply

The APT20 is a phantom power supply unit for use with two condenser microphones. It supplies 48V DC to the microphones and routes the signal to a mixer or microphone amplifier. It features XLR connections for in- and output and at the back is an euro IEC power connection with power switch provided.

Optional mounting bracket



MSB200



CMP401

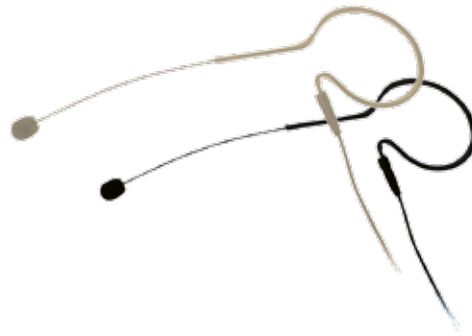
Microphone power adapter

The CMP401 is a simple to use microphone power adapter for phantom power type condenser microphones, especially for headset and lavalier microphones. It features a gold plated 4 pole male Mini-XLR input connector and a gold plated 3 pole male XLR output connector. An internal circuit transforms the 48V phantom supply voltage into a voltage between 1.5V and 10V, needed for the microphone. Two switches on the side allow you to adjust the gain or activate low frequency cutoff. The CPM401 is delivered with a belt clip.



CMX706

Clip-on ear microphone

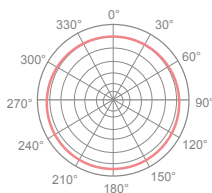


CMX706

The CMX706 is an omnidirectional clip-on ear microphone designed for vocal and speech applications. Thanks to the flat frequency response characteristic which guarantees high fidelity sound reproduction, voices will be reproduced in a natural way.

Because of the EMI and low noise suppression, low frequencies are repressed, shutting out hum and interference caused by other sources, which improves the sound reproduction quality, making it suited for vocal applications. The unique tiny size and super light weight provide a comfortable and optimum fit for any occasion.

It is available in black (/B) and skin colour (/S) and comes with 4 different replaceable connectors making it suitable for use with belt packs of various major manufacturers.



CMX connection types

All CMX clip-on and headset microphones (CMX706, CMX726 and CMX826) come with 4 different replaceable connectors, making it suitable for use with belt packs of various major manufacturers.

Standard included connector types :

DB thread 3.5 mm plug



Sennheiser 3.5 mm plug



Shure 4 pin mini XLR



AKG 3 pin mini XLR



More connection types optionally available for more system compatibility :

Audiotechnica UniPak

	Type	Polar pattern	Impedance	Max SPL	Sensitivity	Dimensions	Weight
CMX706	Back electret condenser	Omnidirectional	2000 Ω	135 dB	42 dB +- 3 dB	150 x 50 x 20 mm	3 g (w/o cable)

CMX72 & CMX82 series

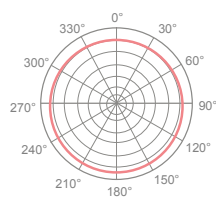
Headset condenser microphones



CMX726

The CMX726 is an omnidirectional headset microphone designed for vocal and speech applications, ranging from speeches to aerobic lessons. The flat frequency response and the high Sound Pressure level ensure a high-fidelity sound reproduction, true to the user's voice and intonation, even when a hard and vigorous sound is applied.

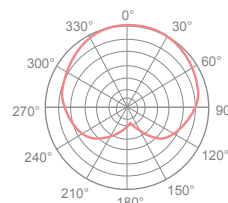
It is available in black (/B) and skin colour (/S) and comes with 4 different replaceable connectors making it suitable for use with backpacks of various major manufacturers.



CMX826

The CMX826 is a headset condenser microphone with a directional cardioid pick-up pattern, designed for professional 'hands free' voice reinforcement or recording applications. The cardioid pick-up pattern guarantees an excellent rejection of background noise and feedback, allowing it to be used in acoustical demanding applications or situations where the performer is positioned in front of loudspeakers or monitors.

It is available in black (/B) and skin colour (/S) and comes with 4 different replaceable connectors making it suitable for use with backpacks of various major manufacturers.



	Type	Polar pattern	Impedance	Max SPL	Sensitivity	Dimensions	Weight
CMX726	Back electret condenser	Omnidirectional	2000 Ω	135 dB	42 dB ± 3 dB	140 x 75 x 150 mm	4 g (w/o cable)
CMX826	Back electret condenser	Cardioid	2000 Ω	128 dB	44 dB ± 3 dB	140 x 75 x 150 mm	4 g (w/o cable)



SOLUTION BOXES

An extensive line of compact audio solutions and problem solvers.

ALI & ATU series



ALI20/25

Audio line isolator

The ALI20/25 are audio line isolators, designed to isolate audio devices from each other. In most cases they are used to avoid hum, caused by ground loops in audio systems.

They offer a complete passive solution for the isolation of a stereo balanced audio signal. It features dual XLR in- and output connectors and a ground lift switch. The in- and output phase are matching.

The ALI20/25 are both built with an audio transformer that has a turns ratio of 1:1 and an impedance of 600Ω.

The difference is the shielding of the transformer. The ALI20 contains a shielded transformer that complies with the requirements of most standard applications. While the ALI25 contains a MU-metal shielded transformer that can be used when regular shielding becomes inadequate. This ensures the best results in even the highest EMI polluted environments.



ATU44MK2

Universal input adapter

The ATU44MK2 is a universal input adapter suitable for a wide variety of connections and extensions.

It can be used for converting any loudspeaker level into a balanced or unbalanced line level signal. It has inputs for 100V, 70V, 50V, 33V and standard 8Ω low impedance speaker signals.

A second possibility is converting an unbalanced line level signal into a balanced one, and vice versa.

The switch on the front panel allows you to select between converting a speaker signal into a line level signal, or the conversion of line level signals.

The inputs and outputs are completely galvanically isolated by means of an audio isolation transformer. This makes the ATU44MK2 the perfect solution for solving hum and buzz problems caused by ground loops.

Optional mounting bracket



Compatible with a variation of MBS1xx series installation accessories, see page 155 of this catalogue.



APG20MK2

Receiver gateway

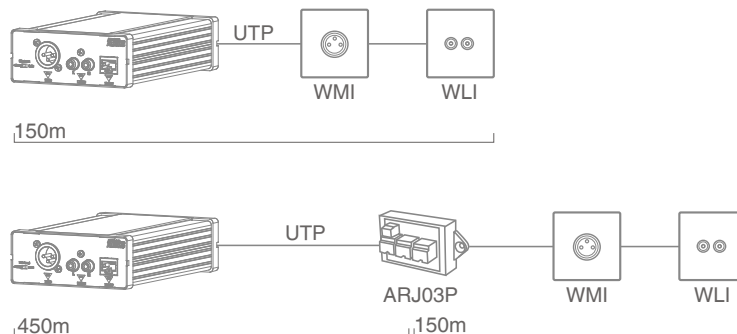


APG20MK2

The APG20MK2 is an audio receiver gateway converting databus transmitted audio signals to standard line and microphone level signals. The audio output of the APG20 can be fed to regular inputs on audio amplifiers, pre-amplifiers, mixers and many more.

In combination with the matching input modules (WLI and WMI) it offers a solutions for two channel audio transmission (line & microphone) covering distances up to 300 meters over standard UTP CAT5E (or better) cabling. Distances up to 600 meters can be achieved when applying additional power supplies.

Due to the differential bus input with increased voltage levels, the received signals are insensitive for noise, interference and attenuation over the long transmission distance. This offers the appropriate solution for high quality audio transmissions in long distance applications.



Optional mounting bracket



Compatible with a variation of MBS1xx series installation accessories, see page 155 of this catalogue.

WLI & WMI series

Active audio transceivers



WLI18

The WLI18 wall line input units are fitted with two RCA connectors, allowing line level audio signal transmission over long distances to matching receiver units (e.g. APG20MK2, MTX, ...).

The applied signal is converted to a dual mono signal with increased voltage levels, making it insensitive to interference and noise. This allows transmission over long distances (up to 300 meters) without any loss of quality over standard CAT5E (or better) twisted pair cabling.

Bus connections are made on the rear of the unit using terminal block connections, while the flush mountable design allows integration with matching installation materials (cover frames and wall boxes).



WMI18

The WMI18 wall line input units are fitted with a female XLR connector, allowing microphone level audio signal transmission over long distances to matching receiver units (e.g. APG20MK2, MTX, ...). A jumper enables 15V phantom power for powering condenser microphones.

The applied signal is converted to increased voltage levels, making it insensitive to interference and noise. This allows transmission over long distances (up to 300 meters) without any loss of quality over standard CAT5E (or better) twisted pair cabling.

Bus connections are made on the rear of the unit using terminal block connections, while the flush mountable design allows integration with matching installation materials (cover frames and wall boxes).

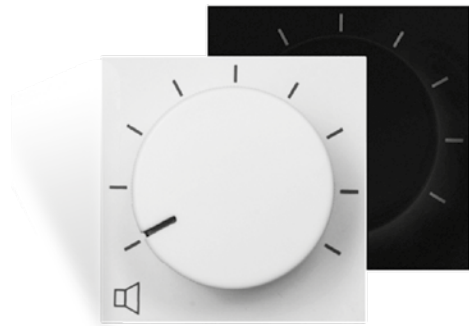


WALL PANELS

Wide range of audio and video local inputs as well as program and volume controllers.

VC series

Volume controllers & program selectors



VC3036/4036

The VC3036/4036 are 100V wall volume controllers whereby the volume for 100V loudspeakers can be adjusted in ten steps of 3 dB. The VC3036 is compatible with AUDAC, Niko, Legrand and other 45 x 45 mm standard installation materials, while the VC4036 is compatible with BTicino Livinglight installation materials.

An integrated 24V relay with separate priority input allows bypassing of the volume controller in priority situations, making sure the right message is always clearly heard at maximum volume. Connections are made using screw terminal blocks.

VC3xx2

The VC3xx2 Series are 100V wall volume controllers whereby the volume for 100V loudspeakers can be adjusted in 11 steps of 3 dB. They feature a slim and good looking design and are constructed out of sturdy ABS, making them suitable for big projects in industrial environments as well as standard home interiors.

An integrated 24V relay allows bypassing of the volume controller in priority situations, making sure the message is always clearly heard at maximum volume. Connections are made using screw terminal blocks and flush and surface mount boxes (WB3102) are separately available.

	Max power load	Max operation voltage	Attenuation	Colour	Mounting	Dimensions
VC3036	36W	100V	9 x 3 dB	black & white	AUDAC / Niko	45 x 45 x 60 mm
VC4036	36W	100V	9 x 3 dB	black & white	BTicino Livinglight	43 x 43 x 60 mm
VC3022	20W	100V	11 x 3 dB	white	80 x 80 European std	80 x 80 x 50 mm
VC3062	60W	100V	11 x 3 dB	white	80 x 80 European std	80 x 80 x 50 mm
VC3102	100W	100V	11 x 3 dB	white	80 x 80 European std	80 x 80 x 50 mm



VC3208

The VC3208 is a flush mount wall controller for volume regulation of voltage controlled (0 ~ 10Vs) amplifiers such as SX408A and AMP20. The volume is fluently controllable using the rotatable dial with potentiometer.

The connection between the amplifier and the regulator is made using twisted pair CAT5E (or better) cabling fitted with a pluggable terminal block connector. It is compatible with standard 45 x 45 mm installation materials such as AUDAC, Niko, Legrand, etc.



PC3000/4000

The PC3000 and PC4000 are flush mount wall program selectors for 100V PA installations. The PC3000 is compatible with AUDAC and Niko installation materials, and the PC4000 is compatible with BTicino Livinglight installation materials.

The channel is selectable with a rotatable dial from 5 different sources and when the “zero” position is selected, no program will come through.

	Programs	Relay	Construction	Colour	Mounting	Dimensions
PC3000	5	24V DC - 25mA	ABS	black & white	AUDAC / Niko	45 x 45 x 60 mm
PC4000	5	24V DC - 25mA	ABS	black & white	BTicino Livinglight	43 x 43 x 60 mm

CP series

Connection plates



CP45RCA



CP45BNC



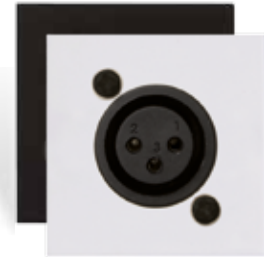
CP45XLM



CP45VGA



CP45SPE



CP45XLF



CP45HDM



CP45LSP



CP45ARJ



CP45DSZ

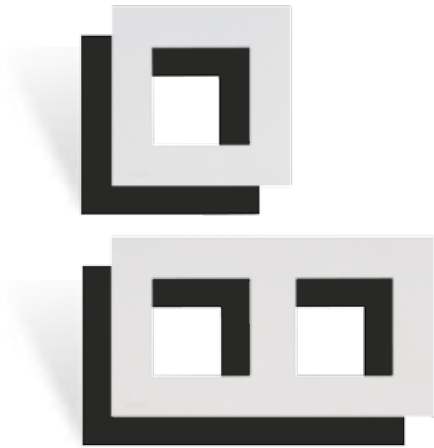


CP45KS2

	Connector	Dimensions CP45	Built-in depth	Colours
RCA	2 x RCA	45 x 45 x 25 mm	45 mm	black (B) & white (W)
BNC	1 x BNC	45 x 45 x 25 mm	45 mm	black (B) & white (W)
VGA	1 x sub D15	45 x 45 x 25 mm	45 mm	black (B) & white (W)
XLM	1 x D-size XLR male	45 x 45 x 25 mm	45 mm	black (B) & white (W)
XLF	1 x D-size XLR female	45 x 45 x 25 mm	45 mm	black (B) & white (W)
Speaker	1 x D-size speaker	45 x 45 x 25 mm	45 mm	black (B) & white (W)
HDMI	1 x HDMI with fixscrews	45 x 45 x 25 mm	45 mm	black (B) & white (W)
ARJ	1 x RJ45	45 x 45 x 25 mm	45 mm	black (B) & white (W)
DSZ	D-size hole	45 x 45 x 25 mm	45 mm	black (B) & white (W)
KS2	2 x Keystone adapter	45 x 45 x 25 mm	45 mm	black (B) & white (W)

CF & WB series

Cover frames & surface mount boxes



CF45S / CF45D

The CF45 cover frames allow flush mount installation for any 45 x 45 mm standard sized product such as matrix control panels, volume controllers, connection plates, etc.

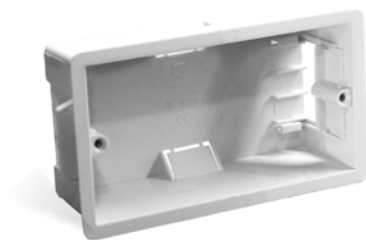
They come including a metal subframe(s) and are available in single (CF45S) and double (CF45D) unit size and in black (/B) and white (/W).



WB45S / WB45D

The WB45 wall boxes allow surface mount installation for any 45 x 45 mm standard sized product such as matrix control panels, volume controllers, connection plates, etc.

They come including a metal subframe(s) and are available in single (WB45S) and double (WB45D) unit size and in black (/B) and white (/W).



WB50

The WB50 in-wall and on-wall boxes allow flush and surface mount installation for a variety of wall control panels such as DW5066, MWX65 and WP523.

WB50/FG: Plastic flush mounting version for hollow walls

WB50/FS: Metal flush mounting version for stone/concrete walls

WB50/W & /B: Plastic surface mount version



WB3102

The WB3102 in-wall and on-wall boxes allow flush and surface mount installation for VC3xx2-series volume controllers.

WB3102/FS: Metal flush mounting version for stone/concrete walls

WB3102/SW: Plastic surface mount version



OTHER PRODUCTS

A wide variety of appliances, accessory solutions and promo materials.

TR1 series

Audio line transformers

The TR1000 series are 100V line transformers, designed for impedance matching between loudspeakers and amplifiers. They are used for converting low impedance speakers allowing them to be used in 100V PA installations where long cableruns can be used.

The transformers have an over-dimensioned core, that limits saturation to a minimum and gives remarkable improvement of the sound reproduction quality, especially in the low frequencies.

There are several power tapings available for 100V, and depending of the transformer that is used, the output impedance can also be selected.



TR1006



TR1010



TR1024

	Power taps	Output impedance	Dimensions	Weight
TR1006	6 / 3 / 1.5W	8 Ω	63 x 36 x 40 mm	161 g
TR1010	20 / 15 / 10 / 7.5 / 5 / 3W	2 / 4 / 8 Ω	52 x 60 x 56 mm	620 g
TR1024	24 / 12 / 6W	8 Ω	52 x 60 x 56 mm	360 g

TR2 series

Groundloop isolators



The TR2000 series are basic stereo ground loop isolators, designed as problem solvers to electrically isolate audio devices from each other. Hum in audio systems is usually caused by ground loops in the system. The most common and simple method to solve these problems is an audio isolation transformer such as the TR2000 series.

- TR2050 Stereo ground loop isolator 2 x RCA male to 2 x RCA female
- TR2060 Stereo ground loop isolator 3.5 mm Jack male to 2 x RCA male
- TR2070 Stereo ground loop isolator 3.5 mm Jack male to 3.5 mm Jack female
- TR2080 Stereo ground loop isolator 3.5 mm Jack male to 2 x XLR male

WTR series

Waterproof transformers



The WTR series are 100V line transformers for impedance matching between low impedance loudspeakers (8Ω) and 100V amplifiers. Using these transformers, low impedance loudspeakers can be applied to any 100V public address system where long cable runs can be used.

The WTR06 has a maximum output power of 6W and different power taps for 6W, 3W and 1.5W, while the WTR24 has an output power of 24W and taps for 24W, 12W and 6W.

The housing is designed to be water and dust proof, while making it possible to be hidden at any location such as above the false ceilings, in wall junction boxes, in hollow places inside walls, etc. All these features make these transformers comply to an Ingress Protection rating of IP66.

	Power taps	Output impedance	Dimensions	Weight
WTR06	6 / 3 / 1.5W	8 Ω	63 x 53 x 63 mm	300 g
WTR24	24 / 12 / 6W	8 Ω	63 x 53 x 63 mm	400 g

MBS1xx series

Setup box installation accessories



The MBS1xx is a series of installation accessories for use in combination with the setup box products range. This range includes a variation of small electronic products such as amplifiers, transformer boxes, convertors, and many more.

In combination with the MBS1xx series, extended assembly possibilities are offered allowing them to be fixed underneath tables or desks, assembled above drop ceilings or mounted to 19" equipment racks. The mechanic construction for each of these products is identical, allowing a combined installation for various products.

- MBS101T Mounts one unit to a flat surface
- MBS101R Mounts one unit into a 19" equipment rack (1HE)
- MBS102R Mounts two units into a 19" equipment rack (1HE)
- MBS103R Mounts three units into a 19" equipment rack (1HE)
- MBS104R Mounts four units into a 19" equipment rack (1HE)

Measurement appliances



LCR700
Digital LCR meter

The LCR700 is a digital LCR measurement appliance, essential for sound and electronic engineers. Measurements can be made for induction, capacitance and resistance and the dissipation factor (D) can be read-out on a second display. It can be set to auto-ranging or manual mode and all measurements can be carried out on two different frequencies, 120Hz and 1kHz. This allows measurements of great accuracy on all kinds of specimen.



SLM700
Sound level meter

The SLM700 is a stable, safe and reliable sound level meter, designed for all kinds of sound level measurements and compliant to all international standards for sound level meters. It can be switched between two different weighting frequency filters (A and C type) and has a fast (peak value, 125 msec) and slow (average value, 1 sec) operation mode.



CTA845
Cable test adapter

The CTA845 cable test adapter features a 8-pin terminal block connector (3.5 mm pitch) and a female RJ45 connector. Both connectors are parallel connected, allowing twisted pair peripheral expansion cabling being tested with standard RJ45 cable testers. This will avoid wrong wiring causing failure and damage to equipment.



SLC346
Sound level calibrator

The AUDAC SLC336 sound level calibrator is the perfect companion to verify the accuracy of the sound level meters. It is easy to operate, provides two different sound levels (94 dB and 114 dB) at a frequency of 1 kHz and can be used for various sound measurement devices, e.g. the testing of paging microphones.

Power supplies & antennas



PSD series Power supplies

The PSD series offers a wide range of versatile switching power supplies. They are mainly used as power supply for extension units, interface boxes or other expansion units of sound systems, but they can be used for all kinds of applications requiring 12V DC or 24V DC at different current ratings.



There are two different construction forms available. Standard ABS housings suited for standard applications and industrial graded designed DIN rail mounting versions, to be used in all kinds of applications. Going from small and simple applications to industrial environments and hazardous locations.

	Output voltage	Max output current	Max power	Ripple & Noise	Efficiency	Construction	Dimensions
PSD124	12V DC	4A	48W	100mV	83%	DIN rail	32 x 125 x 100 mm
PSD241	24V DC	1.67A	40W	100mV	85%	ABS	50 x 33 x 100 mm
PSD243	24V DC	2A	48W	120mV	85%	DIN rail	32 x 125 x 100 mm



ASK40S

4-Way antenna splitter kit

The ASK40S splitter kit allows antenna signals distribution to 4 receivers (radio tuners). The frequency range of 5 to 2300 MHz offers compatibility for both FM and DAB/DAB+ signals. It includes four F/F coaxial output connection cables (2 x 0.4m & 2 x 0.6m) and an F-type (twist-on) input connection, offering a complete solution for fourfold tuner systems.



RGA10

Outdoor antenna

The RGA10 is an omnidirectional outdoor antenna for FM and DAB/DAB+ radio reception. The circular construction allows antenna assembly around any pole with a 30~50 mm diameter, while the aluminum construction is resistant for permanent outdoor exposure to the elements. Connections are made using an included F-type connector.

Merchandising

Roll up banners



PROMO5028
Roll up banner ATEO,
VEXO & XENO



PROMO5026
AUDAC roll up banner



PROMO5027
Roll up banner CELO &
MERO

Overview

Textiles

PROMO5006	Heavy Duty Cap
PROMO5070	Summer cycling set - S
PROMO5071	Summer cycling set - M
PROMO5072	Summer cycling set - L
PROMO5073	Summer cycling set - XL
PROMO5074	Summer cycling set - XXL
PROMO5075	Winter cycling set - S
PROMO5076	Winter cycling set - M
PROMO5077	Winter cycling set - L
PROMO5078	Winter cycling set - XL
PROMO5079	Winter cycling set - XXL
PROMO5081	Polo shirt - S
PROMO5082	Polo shirt - M
PROMO5083	Polo shirt - L
PROMO5084	Polo shirt - XL

Catalogues

PROMO5029	FX series brochure
PROMO5058	Set solution brochure
PROMO5059	Audio player brochure
PROMO5064	Catalogue V1.0

Other

PROMO5008	Gift box
PROMO5010	MTX display
PROMO5032	Double ended screwdriver
PROMO5033	USB-stick
PROMO5035	White promo box for USB-stick
PROMO5040	Binder
PROMO5041	A4 document
PROMO5042	Ballpoint
PROMO5080	Umbrella



SET SOLUTIONS

AUDAC's most innovating acoustic solutions combined.

Set solutions

Your audio solution, our passion

The set solutions are the result of AUDAC's audio engineers helping you choose between AUDAC's most innovating acoustic solutions. Each set carries a handy 'speech' and 'music' indication logo and you will also find an indication of the area that the audio solution will cover.

Together with the application examples, these elements will provide you with an accurate idea of which solution will work best.

You can find all set solutions inside the separate catalogue that you can download or order in the dealership.



PROMO5058
AUDAC set solutions catalogue

Overview

AGRO solutions

AGRO5.4	4 x CS55 + COM3
AGRO7.10	10 x CS75 + COM12
AGRO8.16	16 x CS85 + COM24

CERRA solutions

CERRA2.2	2 x MERO2 + AMP20
CERRA6.2	2 x MERO6 + DPA152

CONGRESS solutions

CONGRESS2.3	2 x AXIR + BASO10 + SMQ350
CONGRESS3.3	2 x GIAX + 2 x BASO12 + SMQ500

PURRA solutions

PURRA5.1	2 x SSP500 + AMP20
PURRA5.2	2 x WX502/O + DPA152

SENSO solutions

SENSO2.2	2 x CELO2 + AMP20
SENSO2.4	4 x CELO2 + AMP20
SENSO2.8	8 x CELO2D + DPA152
SENSO5.4	4 x CELO5 + DPA152
SENSO6.8	8 x CELO6 + DPA154

SUBLI solutions

SUBLI2.3	2 x ATEO2 + BASO10 + DPA153
SUBLI2.5	4 x ATEO2 + BASO10 + DPA153
SUBLI2.9	8 x ATEO2D + BASO10 + DPA153

FESTA solutions

FESTA4.2	2 x ATEO4 + DPA152
FESTA4.3	2 x ATEO4 + BASO10 + DPA153
FESTA4.4	4 x ATEO4 + DPA152
FESTA4.5	4 x ATEO4 + BASO10 + DPA153
FESTA6.2	2 x ATEO6 + DPA252
FESTA6.3	2 x ATEO6 + BASO10 + SMQ350
FESTA6.4	4 x ATEO6 + DPA252
FESTA6.5	4 x ATEO6 + BASO12 + SMQ350
FESTA7.2	2 x XENO6 + DPA252
FESTA7.4	4 x XENO6 + DPA252
FESTA8.2	2 x XENO8 + SMA350
FESTA8.4	4 x XENO8 + SMA350

FORTE solutions

FORTE8.3	2 x VEXO8 + BASO15 + SMQ500
FORTE8.6	4 x VEXO8 + 2 x BASO15 + SMQ750
FORTE10.2	2 x PX110 + SMA500
FORTE10.4	4 x PX110 + SMA750
FORTE10.6	4 x PX110 + 2 x BASO15 + SMQ750
FORTE12.2	2 x PX112 + SMA750
FORTE12.4	4 x PX112 + SMA750
FORTE12.6	4 x PX112 + 2 x BASO15 + SMQ750
FORTE15.2	2 x PX115 + SMA750
FORTE15.4	4 x PX115 + SMA750
FORTE315.4	2 x FX3.15 + 2 x FX1.18 + 2 x SMQ500 + 1 x SMQ700



Index

AGRO5.4	163	CHA230	128	CSF506	83
AGRO7.10	163	CLS420	118	CSS556	84
AGRO8.16	163	CLS440	118	CSW55	81
ALI20/25	142	CMA142	95	CTA845	156
AMP20MK2	62	CMA144	95	DMP40	40
AMP523	63	CMA162	95	DPA73	59
ANI22	56	CMA164	95	DPA74	60
ANI44	56	CMP30	49	DPA152	58
ANX44	43	CMP401	136	DPA153	59
APC100	24	CMT500 / CMT510	136	DPA154	60
APG20MK2	144	CMX215	132	DPA252	58
APM	133	CMX230	132	DPA616	61
APM101MK2	21	CMX382	133	DSP40	46
APM104MK2	21	CMX706	138	DW3020/4020	16
APM108MK2	21	CMX726	139	DW5066	16
APM116MK2	21	CMX826	139	FESTA4.2	163
APT20	136	COM3	64	FESTA4.3	163
ARJ	23	COM6	64	FESTA4.4	163
ARJ03P	22	COM12MK2	65	FESTA4.5	163
ARP	23	COM24MK2	65	FESTA6.2	163
ARU104MK2	22	CONGRESS2.3	163	FESTA6.3	163
ARU108MK2	22	CONGRESS3.3	163	FESTA6.4	163
ASK40S	157	CP45ARJ	150	FESTA6.5	163
ASP20	123	CP45BNC	150	FESTA7.2	163
ATEO2	94	CP45DSZ	150	FESTA7.4	163
ATEO2D	94	CP45HDM	150	FESTA8.2	163
ATEO4	94	CP45KS2	150	FESTA8.4	163
ATEO6	95	CP45LSP	150	FMP40	40
ATU44MK2	142	CP45RCA	150	FORTE8.3	163
AWP06	82	CP45SPE	150	FORTE8.6	163
AXIR	117	CP45VGA	150	FORTE10.2	163
AXIR/O	117	CP45XLF	150	FORTE10.4	163
BASO10	110	CP45XLM	150	FORTE10.6	163
BASO12	110	CPA12	67	FORTE12.2	163
BASO15	111	CPA24	67	FORTE12.4	163
BMP40	41	CPA36	67	FORTE12.6	163
CAP224	68	CPB110P	104	FORTE15.2	163
CAP248	68	CPB112P	104	FORTE15.4	163
CAP412	69	CPB115P	104	FORTE315.4	163
CAP424	69	CPB112R	104	FX1.18	106
CAP448	69	CPB115R	104	FX3.15	106
CELO2	76	CPR12	35	GIAX	117
CELO2D	77	CS55	78	HM150	135
CELO5	77	CS74	78	HS121	127
CELO6	77	CS75	79	HS208MK2	126
CELO8	77	CS85	79	HS208TMK2	126
CERRA2.2	163	CS424	80	HS212MK2	126
CERRA6.2	163	CS660	80	HS212TMK2	126
CF45S / CF45D	151	CS1000S	91	IMP40	42
CHA215	128	CSA506	81	ISP40	45

KYDO	116	PROMO5042	159	SUBLI2.5	163
LCR700	156	PROMO5058	159	SUBLI2.9	163
LW523	98	PROMO5058	162	TMP40	41
LX503MK2	98	PROMO5059	159	TR1006	154
LX523	98	PROMO5064	159	TR1010	154
M2	12	PROMO5070	159	TR1024	154
M66/67	134	PROMO5071	159	TR2050	154
M86/87	134	PROMO5072	159	TR2060	154
M97	134	PROMO5073	159	TR2070	154
MBK110	104	PROMO5074	159	TR2080	154
MBK112	104	PROMO5075	159	TR3000	73
MBK115	104	PROMO5076	159	TR3030	73
MBK208Z - MBK212Z	126	PROMO5077	159	TR3040	73
MBK302S	107	PROMO5078	159	TR3060	73
MBS101R	155	PROMO5079	159	TR3120	73
MBS101T	155	PROMO5080	159	TR3240	73
MBS102R	155	PROMO5081	159	TR3480	73
MBS103R	155	PROMO5082	159	TRU425	72
MBS104R	155	PROMO5083	159	TRU812	72
MERO2	89	PROMO5084	159	TSP40	47
MERO2D	89	PSD series	157	VC3xx2	148
MERO5	89	PURRA5.1	163	VC3036/4036	148
MERO6	89	PURRA5.2	163	VC3208	149
MMP40	40	PX110MK2	102	VEXO8	101
MPX48	29	PX112MK2	102	WB45S / WB45D	151
MPX88	29	PX115MK2	102	WB50	151
MSP40	44	R2	14	WB3102	151
MTX48	26	R2DIS / M2DIS	16	WLI18	28
MTX88	26	RGA10	157	WLI18	145
MWX45	28	RMT40	43	WMI18	28
MWX65	28	RX112MK2	103	WMI18	145
OPT2	16	RX115MK2	103	WMM20	89
PC3000/4000	149	SENSO2.2	163	WS500	84
PDM200	135	SENSO2.4	163	WS524	90
PMX124	35	SENSO2.8	163	WS624	90
POW2	16	SENSO5.4	163	WTR06	155
PRE16	34	SENSO6.8	163	WTR24	155
PRE26	34	SLC346	156	WX302	96
PROMO5006	159	SLM700	156	WX302/O	97
PROMO5008	159	SMA350	54	WX502	96
PROMO5010	159	SMA500	54	WX502/O	97
PROMO5026	158	SMA750	54	WX802	96
PROMO5027	158	SMQ350	55	WX802/O	97
PROMO5028	158	SMQ500	55	XENO6	100
PROMO5029	159	SMQ750	55	XENO8	100
PROMO5032	159	SP20	122	XMP44	39
PROMO5033	159	SP22	122		
PROMO5035	159	SP202	122		
PROMO5040	159	SSP500	82		
PROMO5041	159	SUBLI2.3	163		

